



# **Space-based Technology Application for Disaster Management in China**

**Ming Liu**

**National Disaster Reduction Center of China,  
Ministry of Emergency Management, P. R. China**

# Natural Disasters in China



China is one of the countries in the world that seriously affected by natural disasters

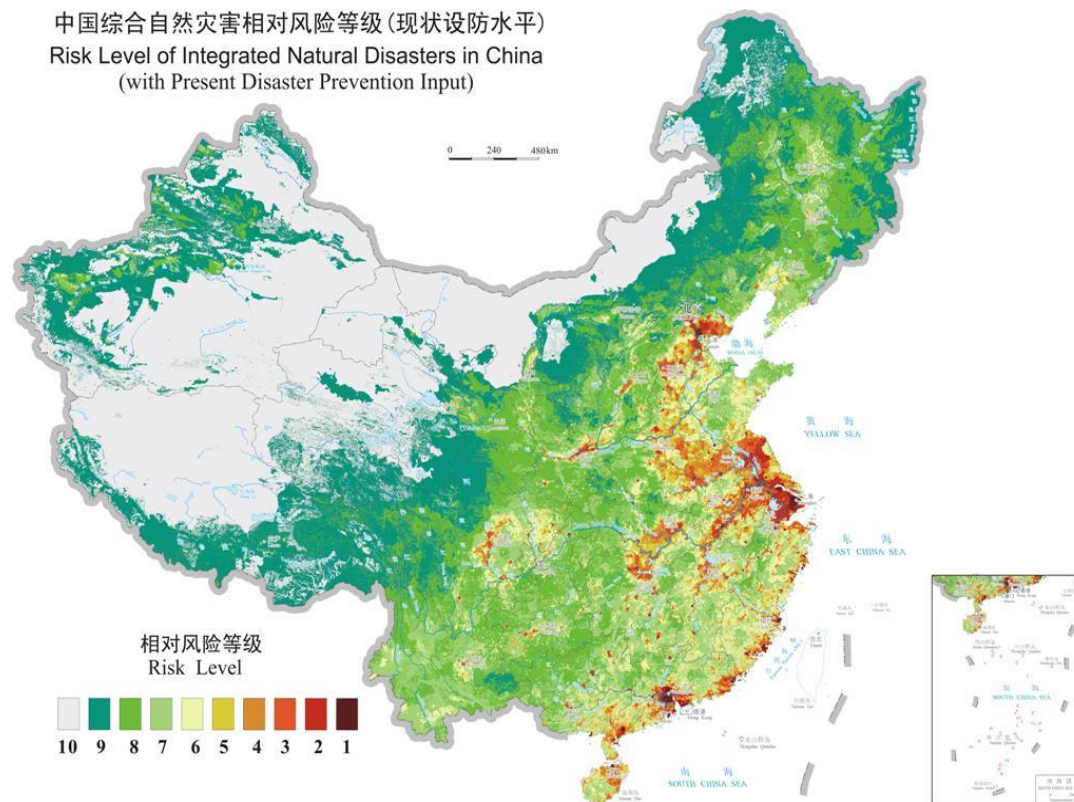
Various disasters

Widely distributed

High frequency

Large impact

中国综合自然灾害相对风险等级 (现状设防水平)  
Risk Level of Integrated Natural Disasters in China  
(with Present Disaster Prevention Input)





## Natural Disaster Losses in 2018



**130** million people were affected



**635** people died or missed



**5** million people-times were urgently relocated and resettled



**97** thousand houses collapsed



the area of affected crop was **20** million ha



The direct economic loss was **264** billion RMB



# State Council Institutional Reform

## Ministry of Emergency Management

State Administration  
of Work Safety

General Office of  
the State Council

Ministry of  
Public Security

Ministry of  
Civil Affairs

Ministry of  
Land and Resources

Ministry of  
Water Resources

Ministry of  
Agriculture

*Emergency  
management*

*Fire service*

*Disaster relief*

*Geological disaster  
prevention*

*Drought and flood  
control*

*Prairie fire control*

State Forest Bureau

China Earthquake  
Administration

National Commission  
for Disaster Reduction

State Flood and  
Drought Relief  
Headquarters

State Council Earthquake  
Relief Headquarters

State Forest Fire  
Prevention Headquarters

*Forest fire control*

*Earthquake  
emergency rescue*

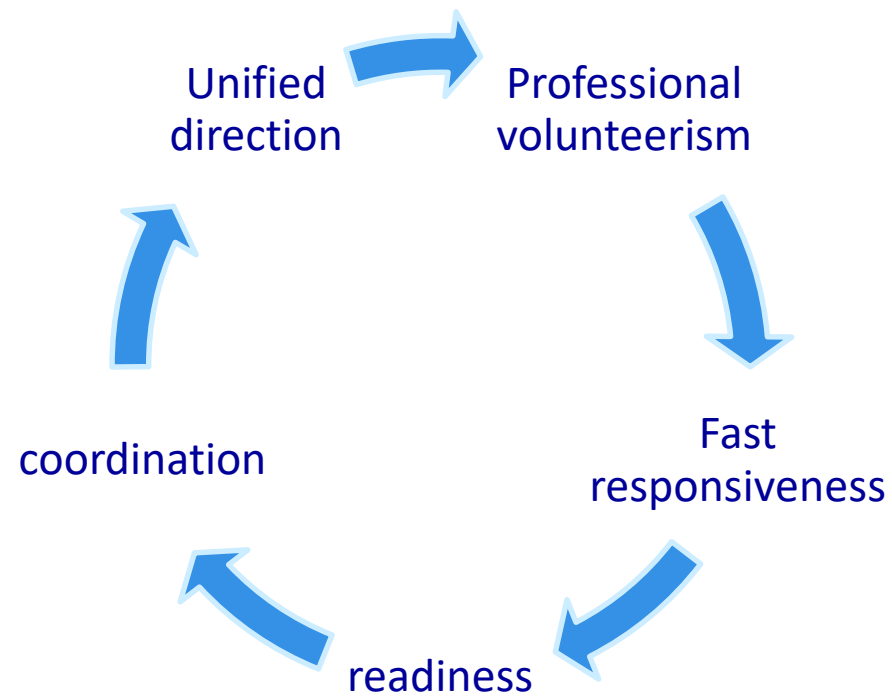




# State Council Institutional Reform



**Building a national emergency response capacity system with Chinese Characteristics**



OPTIMIZATION

COORDINATION

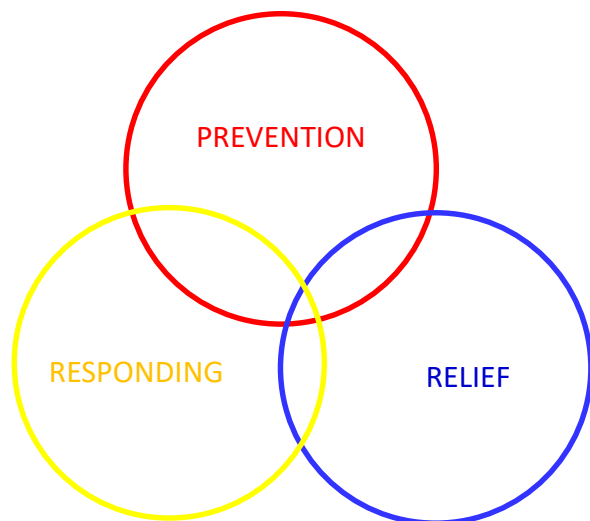
EFFICIENCY



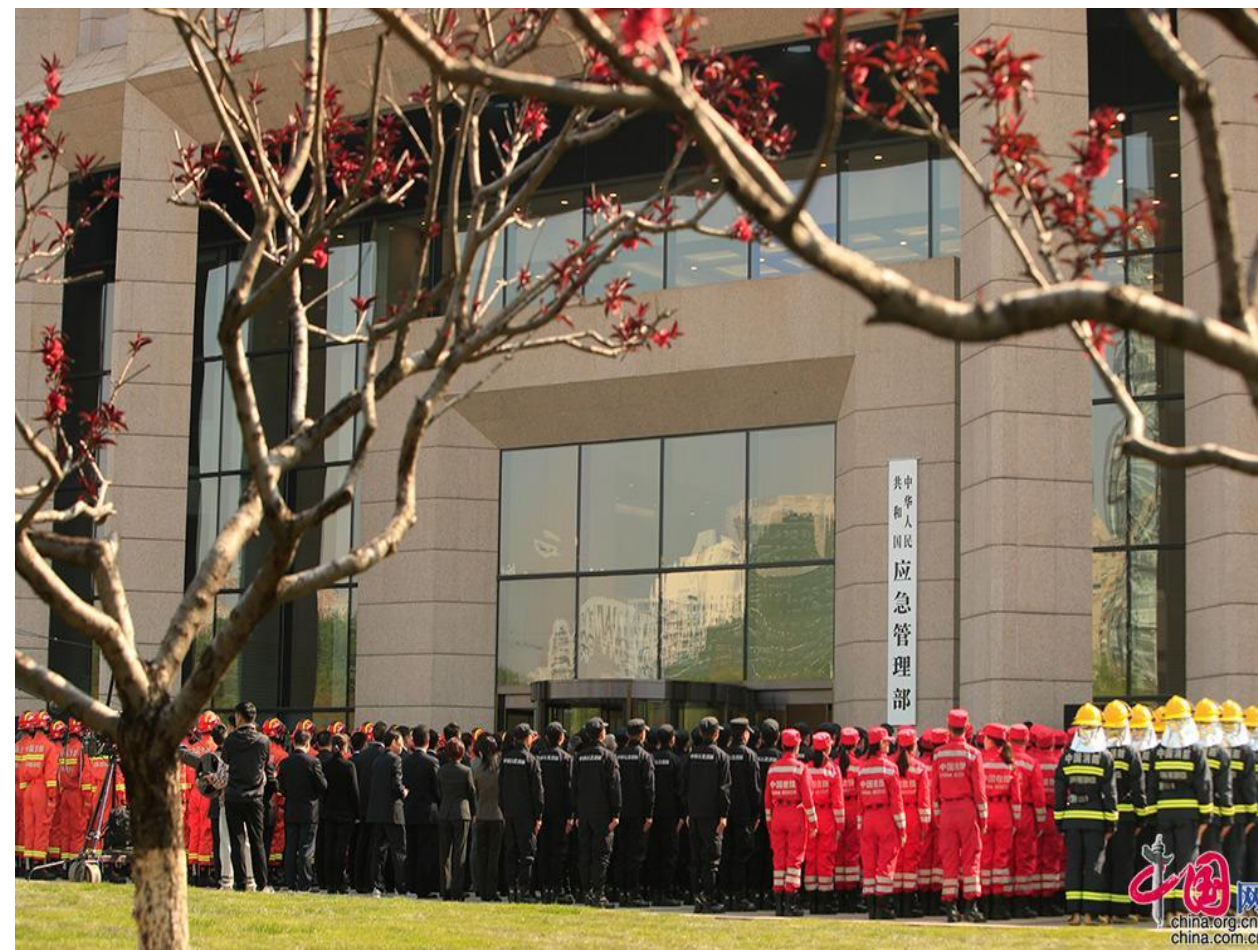
# State Council Institutional Reform

Strengthening Risk Governance and Better Preparedness in advance

Set DISASTER PREVENTION as a priority



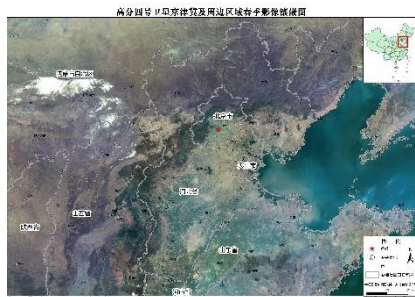
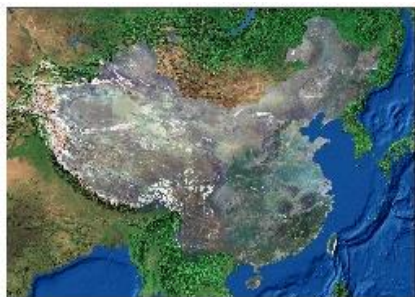
- from post-disaster relief to pre-disaster prevention
- from single-hazard response to integrated DRR
- from reducing disaster losses to reducing disaster risks.



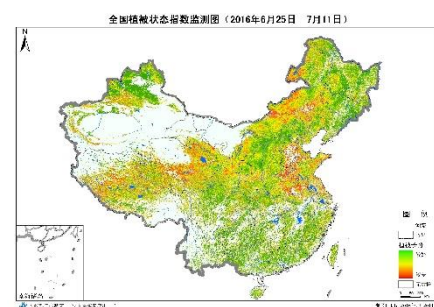


# Disaster Monitoring Products System based on RS

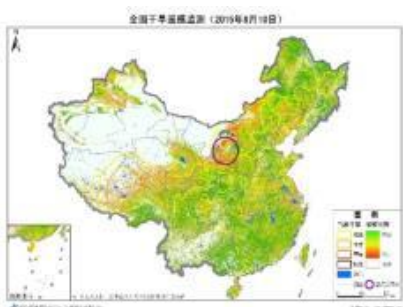
## RS Imagery Products



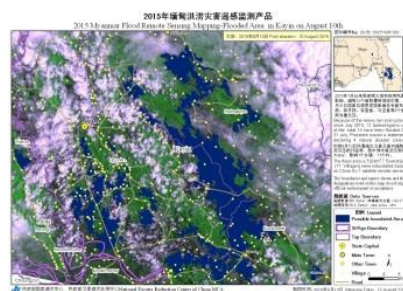
## Disaster Element Monitoring



## Disaster Trend Analysis



## Emergency Monitoring

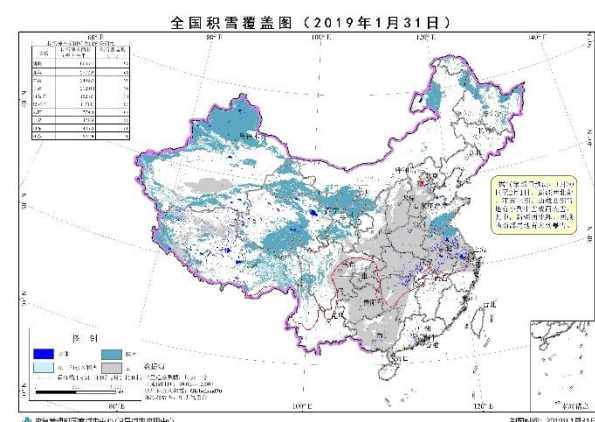
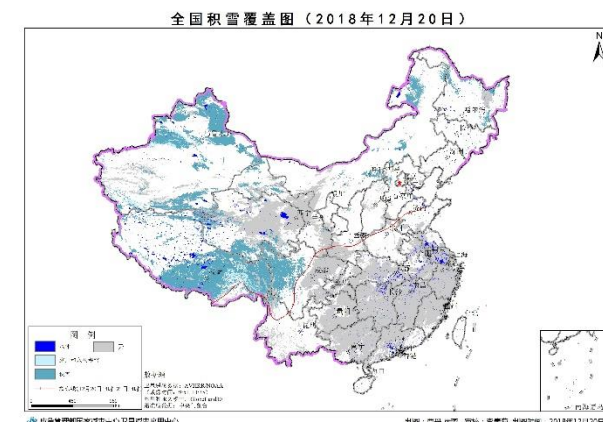
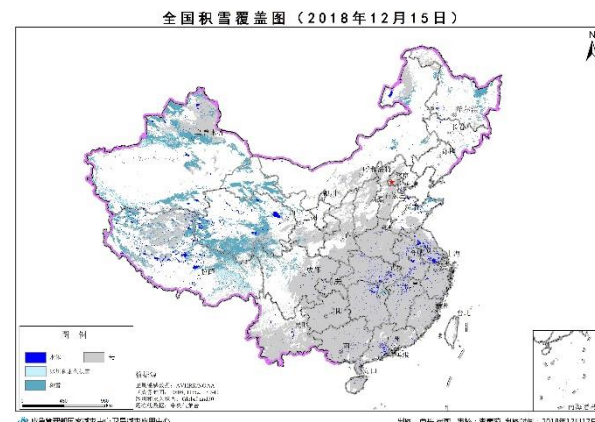
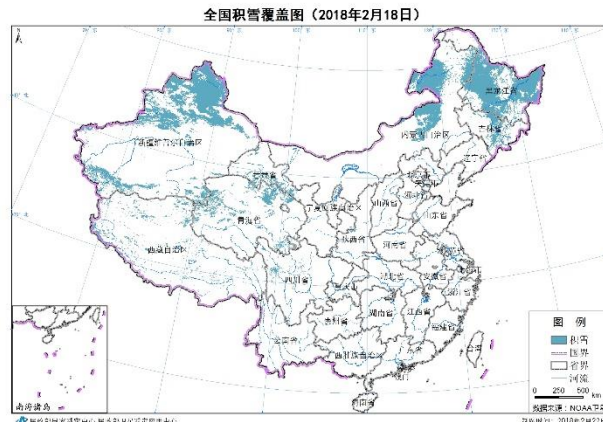


## Recovery & Reconstruction





## Daily Snow Detection

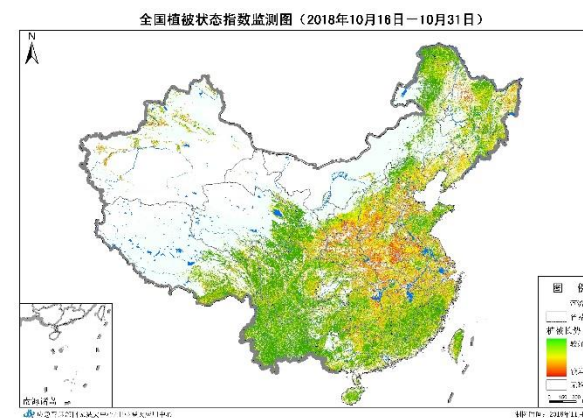
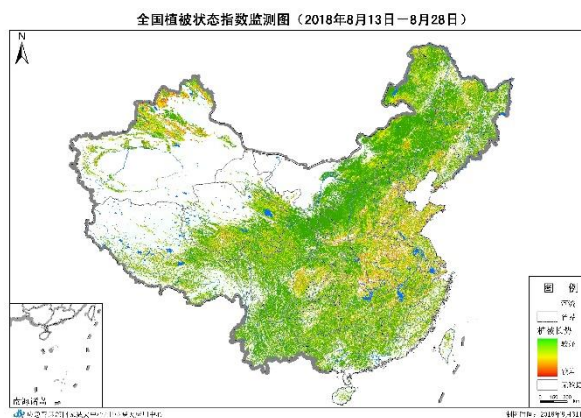
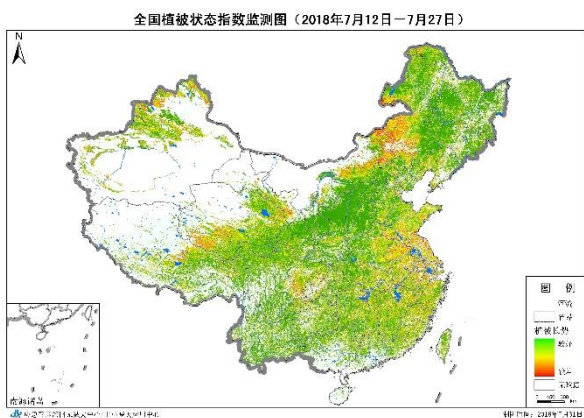
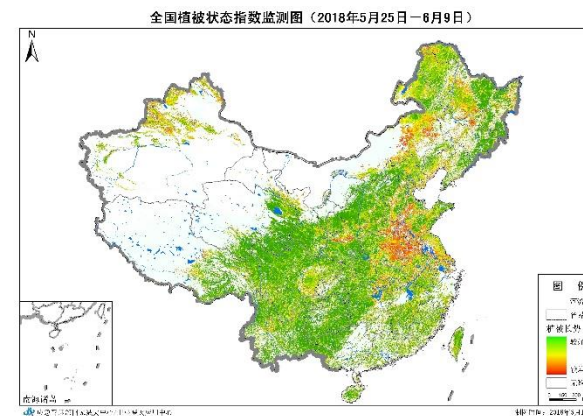
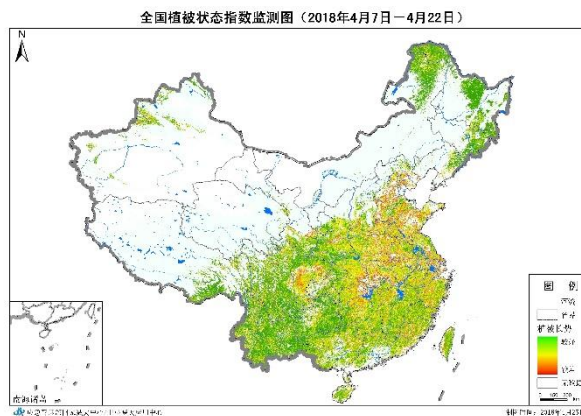
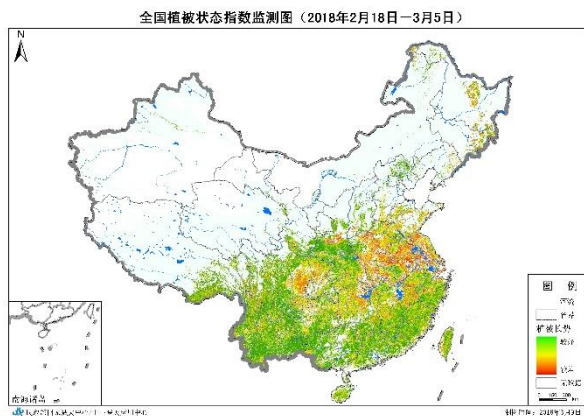


Based on  
Meteorological Satellites (FY & NOAA)





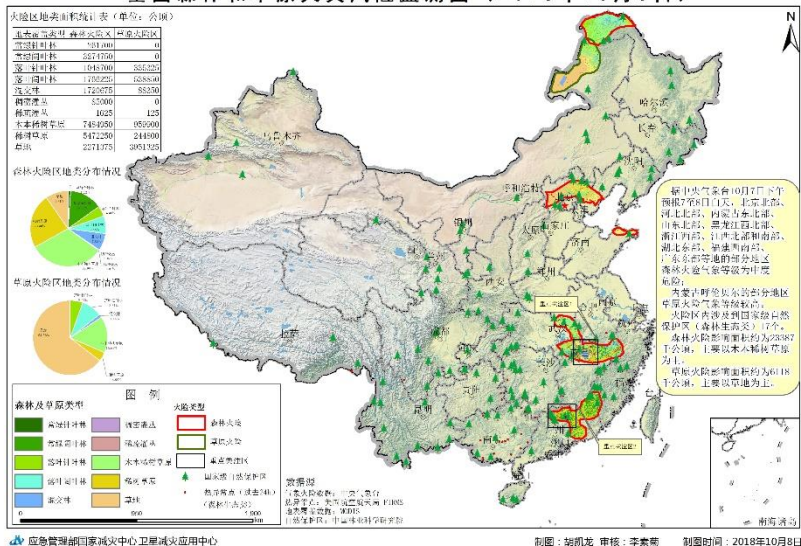
## Vegetation Growth Condition Monitoring



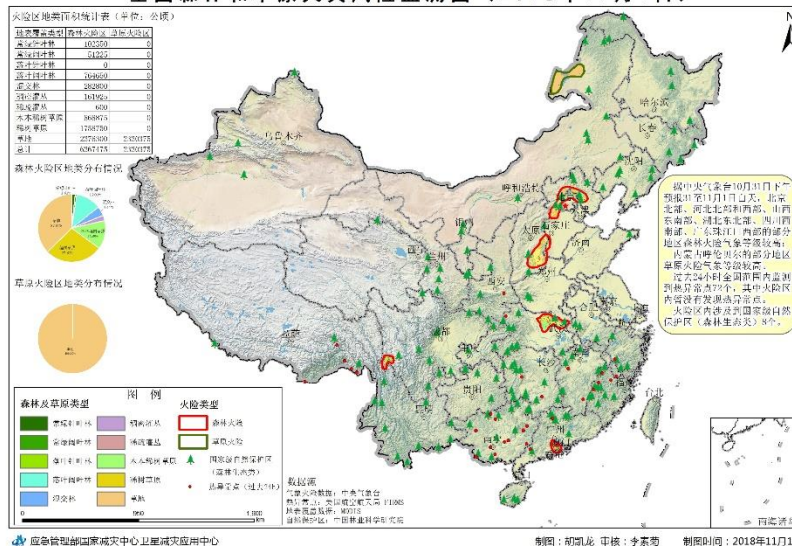


## Wild Fire

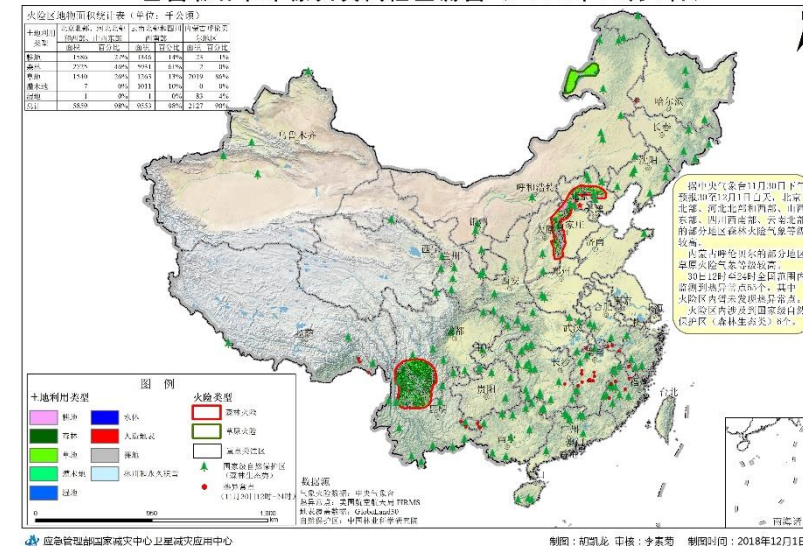
全国森林和草原火灾风险监测图（2018年10月8日）



全国森林和草原火灾风险监测图（2018年11月1日）

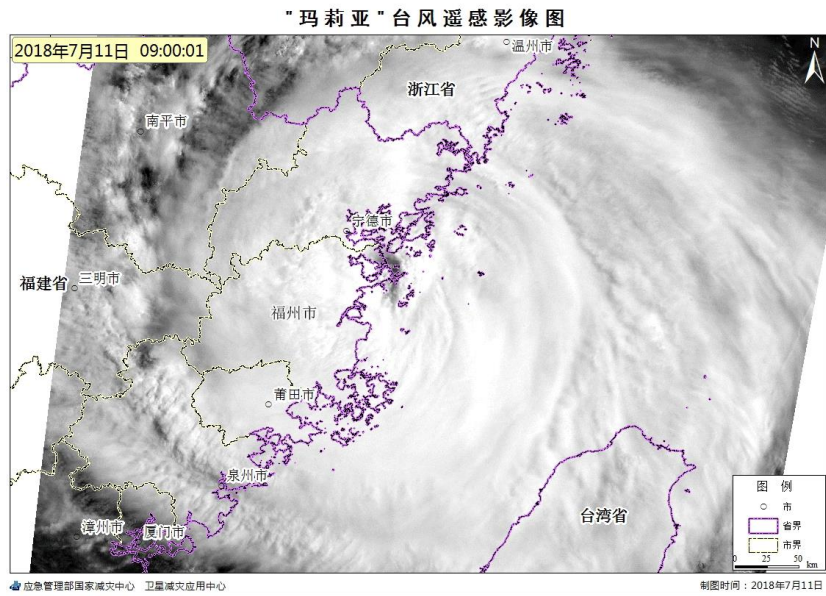


全国森林和草原火灾风险监测图（2018年12月1日）

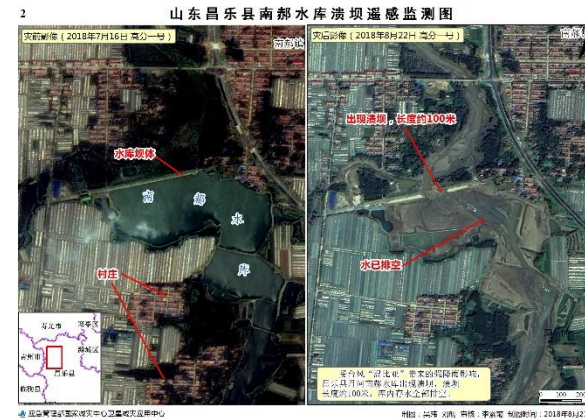
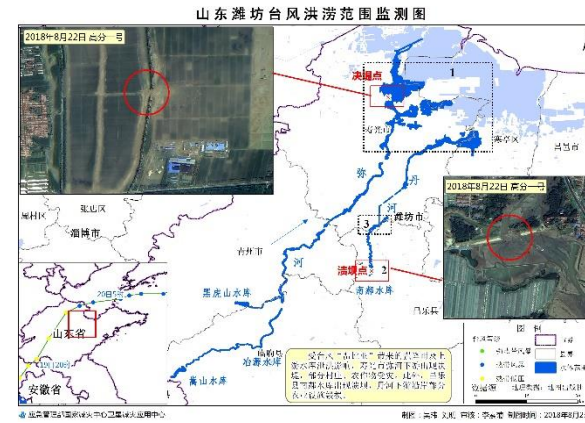




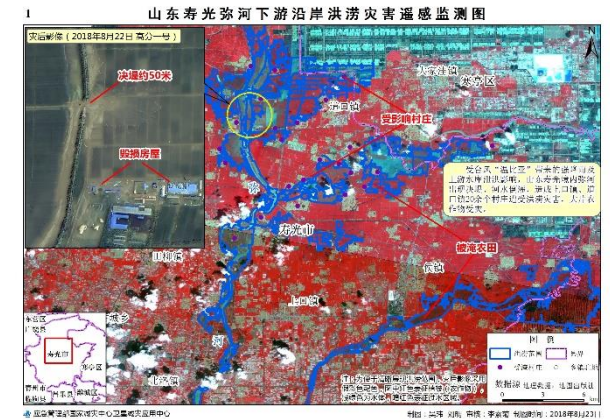
# Typhoon

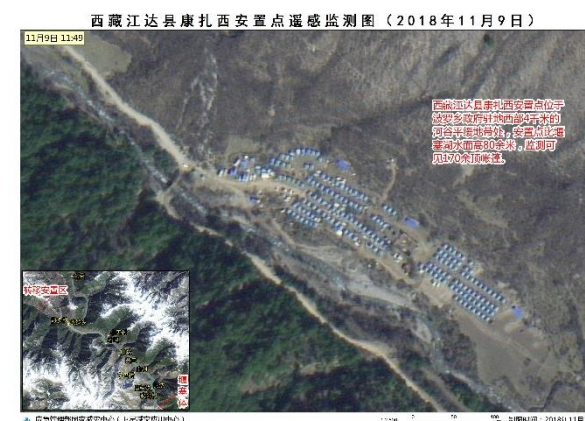
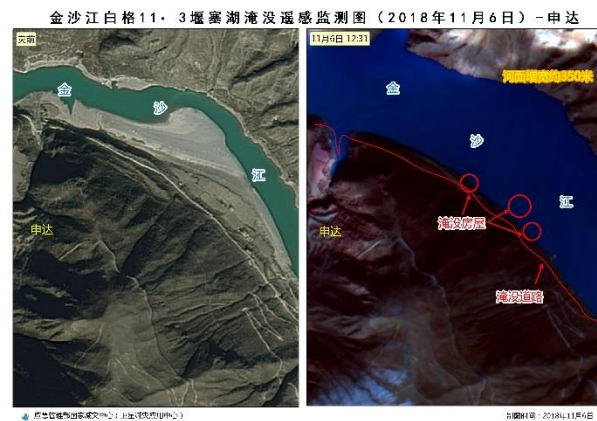
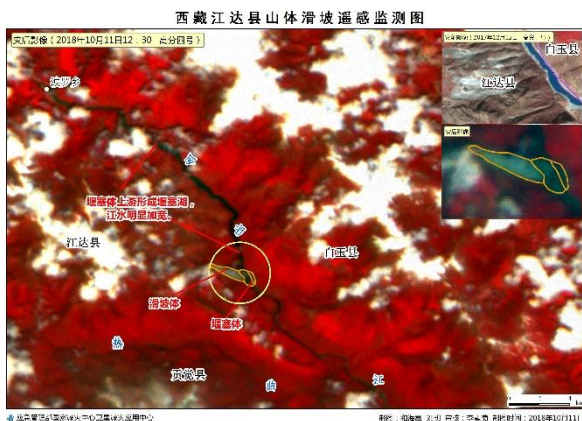


Typhoon Maria monitoring by GF-4 (July, 2018)



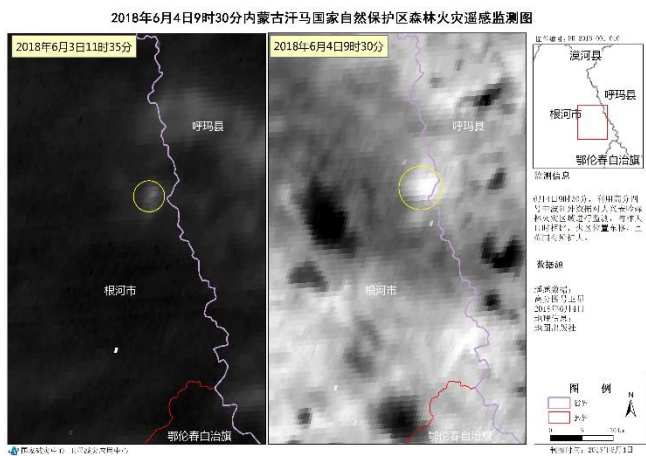
Impact of typhoon Rumbia monitoring by GF-1 in Shandong (August, 2018)



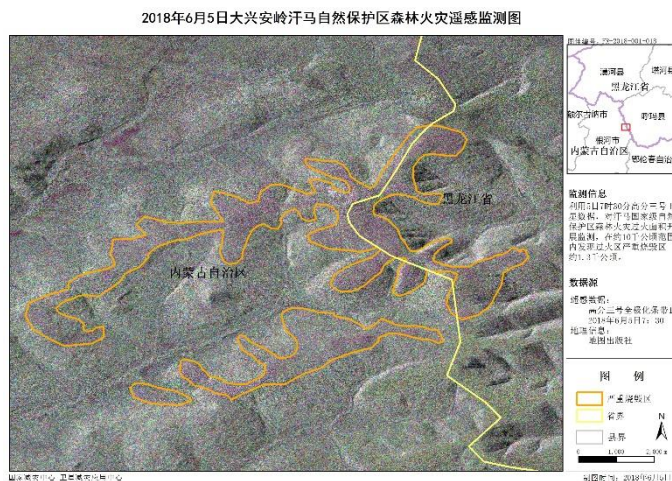




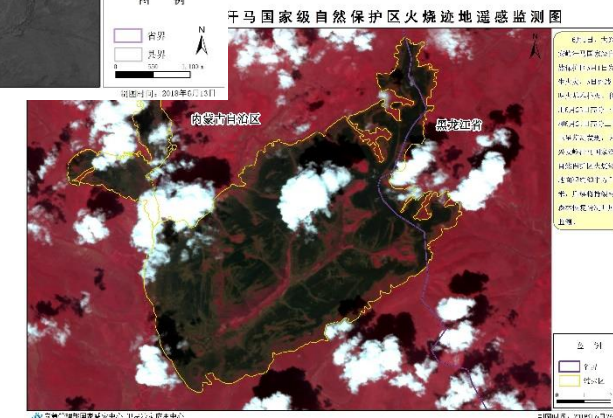
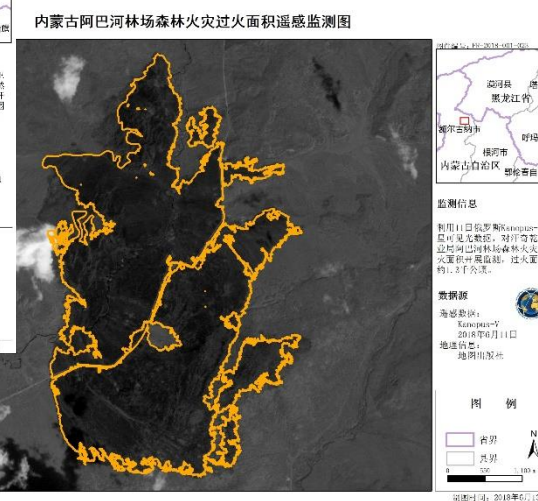
## Wild fire monitoring in Inner Mongolia (June, 2018)



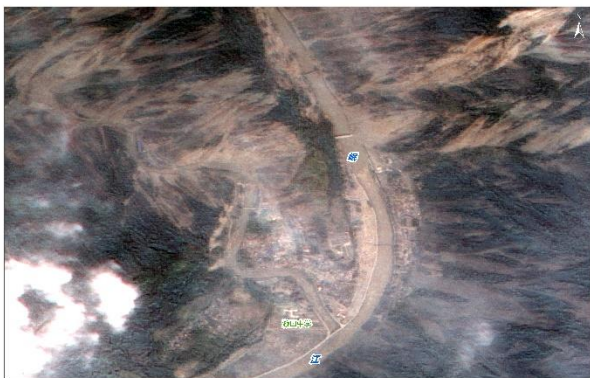
Active Fire



Burned Area



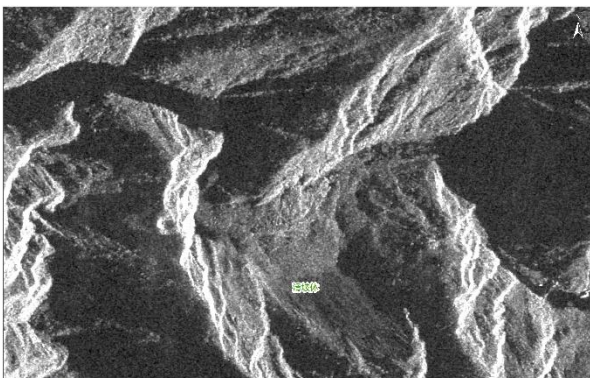
# Recovery & Reconstruction Monitoring



震后映秀  
数据来源: 高分一号 PMS Data Source: GF-1 PMS  
分辨率: 2米 Spatial Resolution: 2 m  
拍摄时间: 2008年11月11日 Time: May 16th, 2008



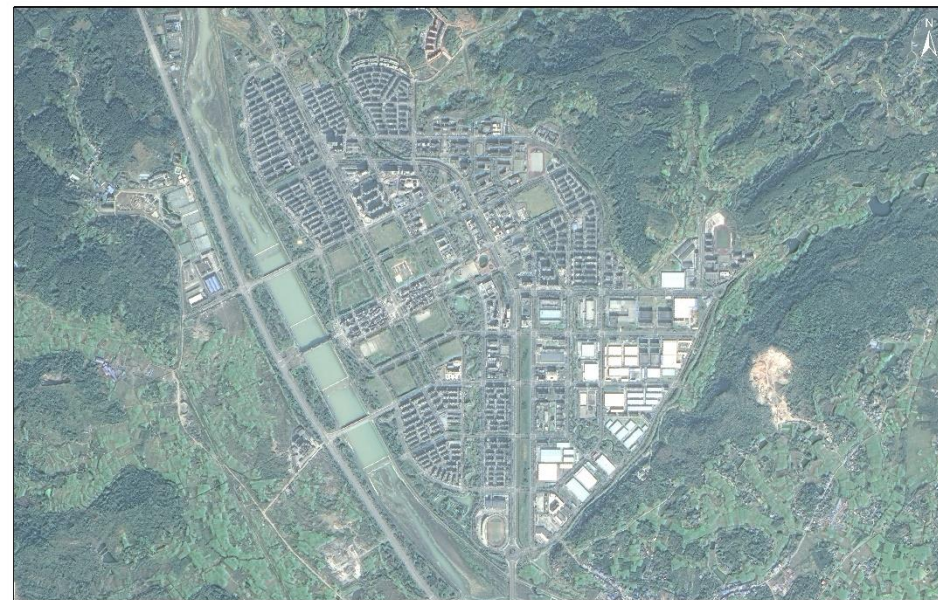
映秀 (2015年)  
数据来源: 高分一号 PMS Data Source: GF-1 PMS  
分辨率: 2米 Spatial Resolution: 2 m  
拍摄时间: 2015年8月16日 Time: August 16th, 2015



唐家山堰塞湖滑坡体  
数据来源: 高分一号 PMS Data Source: GF-1 PMS  
分辨率: 2米 Spatial Resolution: 2 m  
拍摄时间: 2008年11月11日 Time: May 16th, 2008

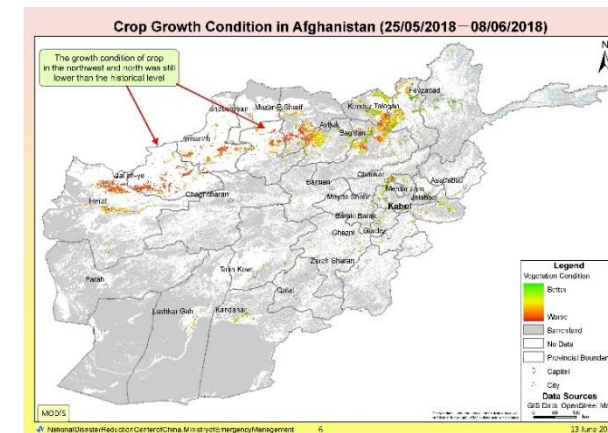
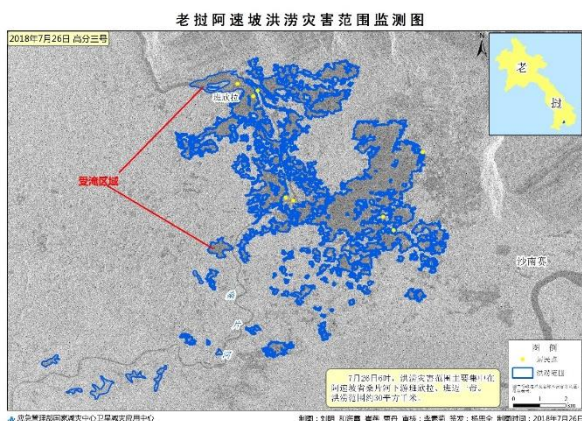
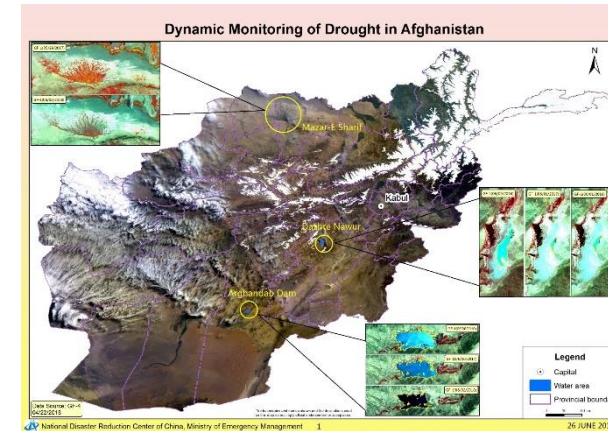
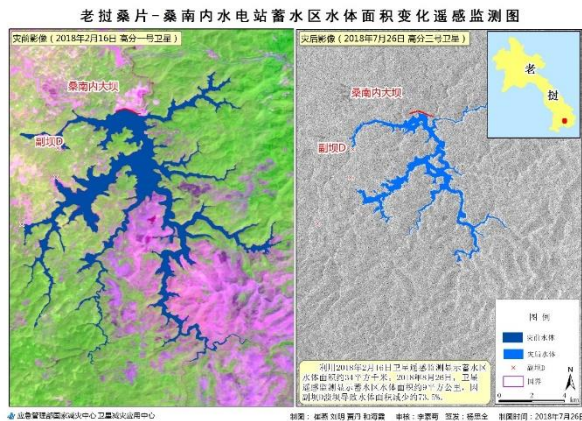


唐家山 (2015年)  
数据来源: 高分一号 PMS Data Source: GF-1 PMS  
分辨率: 2米 Spatial Resolution: 2 m  
拍摄时间: 2015年8月16日 Time: Aug. 16th, 2015



北川新县城 (2016年)  
数据来源: 高分一号 PMS Data Source: GF-1 PMS  
分辨率: 2米 Spatial Resolution: 2 m  
拍摄时间: 2016年12月5日 Time: Dec. 5th, 2016

Reconstruction in Wenchuan Earthquake Region



Dam Collapsed Monitoring in the southern part of Lao PDR by GF-3 (July, 2018)

Loss by Tsunami monitoring by BJ-2 in Indonesia (September, 2018)

Drought Monitoring in Afghanistan (May, 2018)





---

Thank You