



With the contribution of the LIFE financial instrument of the European Community

R. Löwner, A. Souhel and the SaDIN Working Group

Sahel - Doukkala Scientific Information Network



Realisation of an online geoinformation system in Morocco

Sahel - Doukkala Scientific Information Network

Realisation of an online (geo)information system in Morocco

1. General settings & Digital Divide
2. The working groups
3. The data and information system
4. SaDIN – what could it be in the future

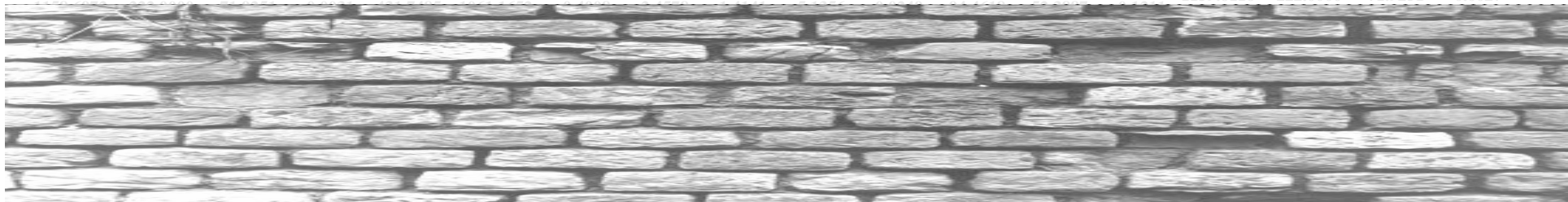
1. General settings & Digital Divide

1160.0688	222.0000	71.9251	0.0025	432.0601	1061.1652	0.4006	2.4561	1.4141	5.1356	0.0249	94.4618	52.3887	0.1211	1160.0688	222.0000	71.9251	0.0025
1159.9164	222.0000	71.9251	0.0026	432.0257	1061.1652	0.4007	2.4566	1.4141	5.1356	0.0249	94.4618	52.3887	0.1211	432.0601	1061.1652	0.4006	2.4561
1159.7640	222.0000	71.9251	0.0026	431.9926	1061.1652	0.4007	2.4564	1.4141	5.1356	0.0249	94.4618	52.3887	0.1211	1159.9164	222.0000	71.9251	0.0026
1159.6116	222.0000	71.9251	0.0027	431.9346	1061.1652	0.4007	2.4568	1.4141	5.1356	0.0249	94.4618	52.3887	0.1211	432.0257	1061.1652	0.4007	2.4563
1159.4592	222.0000	71.9251	0.0028	431.8844	1061.1652	0.4007	2.4569	1.4141	5.1356	0.0249	94.4618	52.3887	0.1211	431.9926	1061.1652	0.4007	2.4564
1159.3068	222.0000	71.9251	0.0028	431.9630	1061.1652	0.4007	2.4566	1.4141	5.1356	0.0249	94.4618	52.3887	0.1211	1159.7640	222.0000	71.9251	0.0026
1159.1544	222.0000	71.9251	0.0029	431.9573	1061.1652	0.4007	2.4566	1.4141	5.1356	0.0249	94.4618	52.3887	0.1211	431.9926	1061.1652	0.4007	2.4564
1159.0020	222.0000	71.9251	0.0030	431.8766	1061.1652	0.4007	2.4571	1.4141	5.1356	0.0249	94.4618	52.3887	0.1211	1159.9164	222.0000	71.9251	0.0026
1158.8496	222.0000	71.9251	0.0030	431.8766	1061.1652	0.4007	2.4571	1.4141	5.1356	0.0249	94.4618	52.3887	0.1211	431.9926	1061.1652	0.4007	2.4564

Data & Information producers

Natural Science

Human Science



1157.6304	222.0000	71.9251	0.0036	434.0764	1061.1652	0.3995	2.4447	1.4141	5.1356	0.0249	94.4618	52.3887	0.1211	1159.1544	222.0000	71.9251	0.0029
1157.4780	222.0000	71.9251	0.0036	430.1323	1061.1652	0.4017	2.4671	1.4141	5.1356	0.0249	94.4618	52.3887	0.1211	431.9573	1061.1652	0.4007	2.4566
1157.3256	222.0000	71.9251	0.0037	436.8765	1061.1652	0.3980	2.4290	1.4141	5.1356	0.0249	94.4618	52.3887	0.1211	431.9926	1061.1652	0.4007	2.4564
1157.1732	222.0000	71.9251	0.0038	440.1890	1061.1652	0.3961	2.4107	1.4141	5.1356	0.0249	94.4618	52.3887	0.1211	1159.0020	222.0000	71.9251	0.0030
1157.0208	222.0000	71.9251	0.0038	442.1210	1061.1652	0.3950	2.4002	1.4141	5.1356	0.0249	94.4618	52.3887	0.1211	431.9573	1061.1652	0.4007	2.4566
1156.8684	222.0000	71.9251	0.0039	436.8765	1061.1652	0.3939	2.3897	1.4141	5.1356	0.0249	94.4618	52.3887	0.1211	431.9926	1061.1652	0.4007	2.4564
1156.7160	222.0000	71.9251	0.0040	439.9926	1061.1652	0.3956	2.4063	1.4141	5.1356	0.0249	94.4618	52.3887	0.1211	1158.8496	222.0000	71.9251	0.0030
1156.5636	222.0000	71.9251	0.0040	434.8168	1061.1652	0.3991	2.4405	1.4141	5.1356	0.0249	94.4618	52.3887	0.1211	431.9573	1061.1652	0.4007	2.4566
1156.4112	222.0000	71.9251	0.0041	433.1608	1061.1652	0.4000	2.4498	1.4141	5.1356	0.0249	94.4618	52.3887	0.1211	431.9926	1061.1652	0.4007	2.4564
1156.2508	222.0000	71.9251	0.0042	422.3351	1061.1609	0.4019	2.4689	1.4141	5.1356	0.0249	94.4618	52.3887	0.1211	1158.8496	222.0000	71.9251	0.0030
1156.1004	222.0000	71.9251	0.0042	422.3351	1061.1609	0.4060	2.5137	1.4141	5.1356	0.0249	94.4618	52.3887	0.1211	431.8766	1061.1652	0.4007	2.4571
1155.9540	222.0000	71.9251	0.0043	427.0148	1058.9504	0.4029	2.4799	1.4141	5.1356	0.0249	94.4618	52.3887	0.1211	431.9926	1061.1652	0.4008	2.4578
1155.8016	222.0000	71.9251	0.0043	424.1209	1057.3688	0.4041	2.4931	1.4141	5.1356	0.0249	94.4618	52.3887	0.1211	1158.6972	222.0000	71.9251	0.0031

Users

Other Scientists

Public

Local authorities

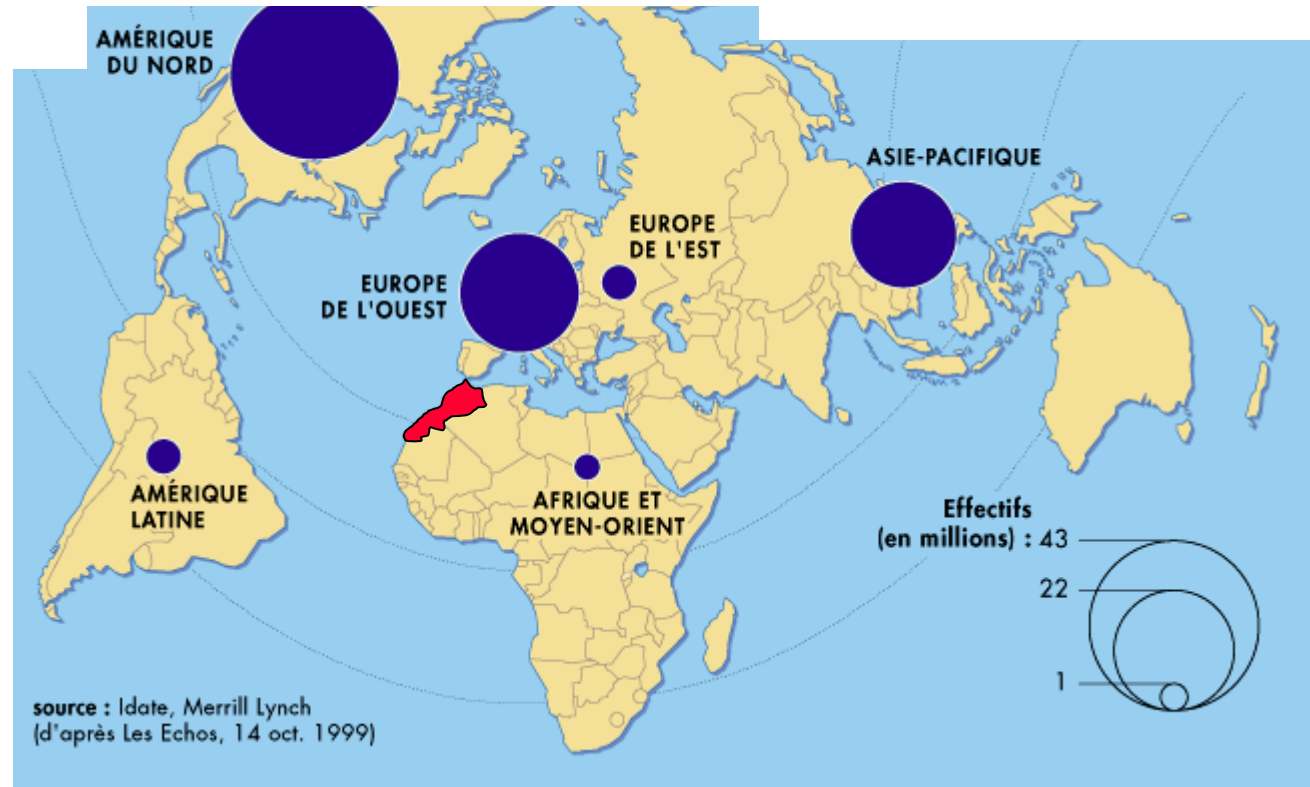
Decision makers



1. General settings & Digital Divide

Internet users of large regions

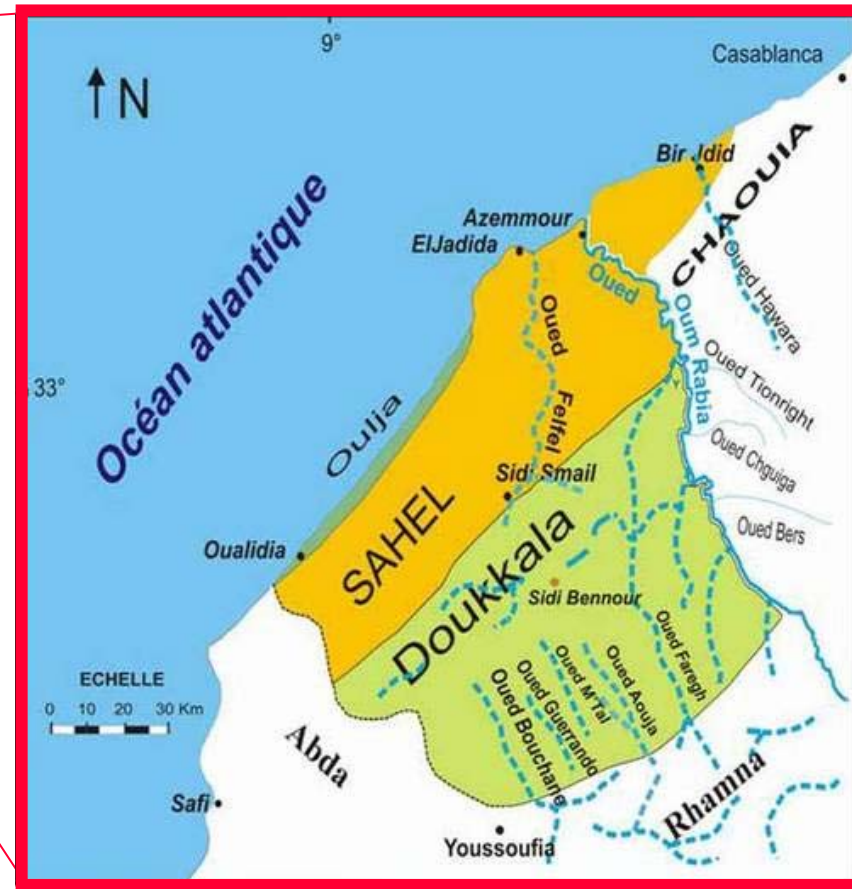
for all
 worldwide
 real time



Internet Supported Scientific Information Network

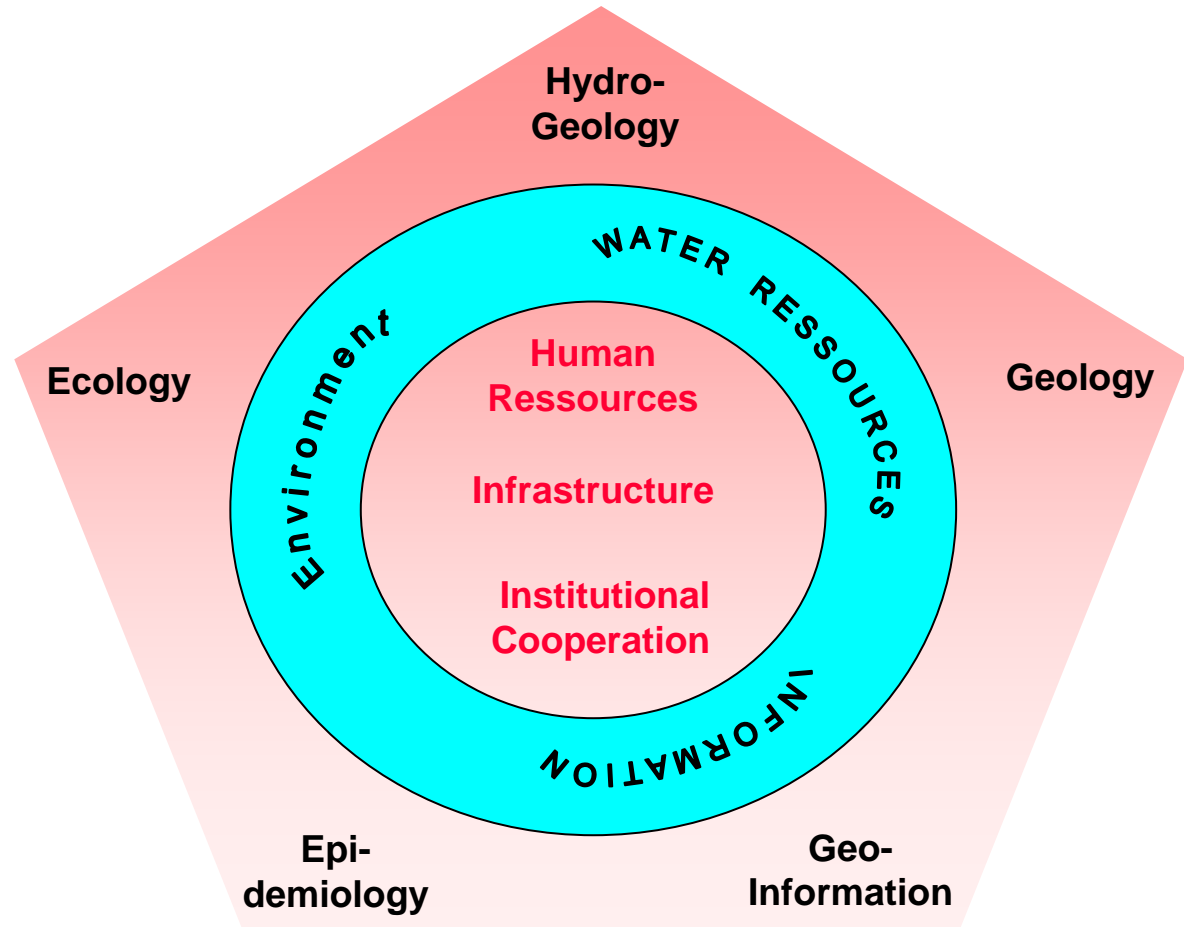
1. General settings & Digital Divide

investigation area of **SaDIN**
 Sahel - Doukkala Scientific Information Network
 شبكة المعلومات العلمية للساحل - دكالة



1. General settings & Digital Divide

- Desertification
- Ground water pollution
- Salt water infiltration
- Waste management – “illegal waste dumps“
- Health

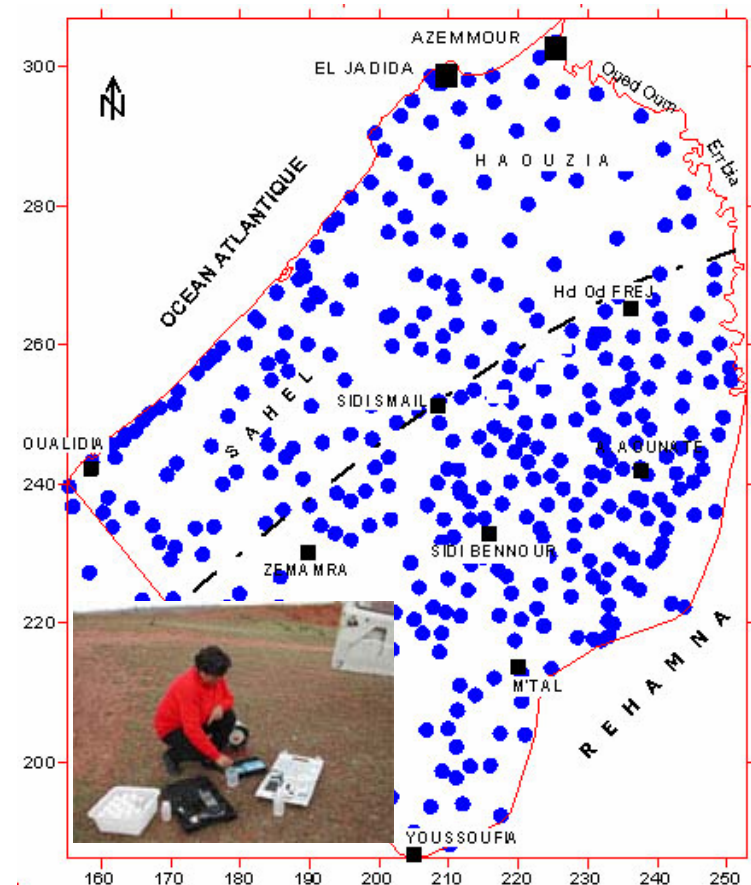


2. The working groups

Geology & Hydrogeology

ground water pollution & salt water infiltration

- **already existing data**
 inventory, revision, update & storage
 on digital support
- **investigations**
 400 wells & interpretation of 300
 soundings
- **drilling**
 vertical to the coastline
- **installations**
 supervision of marin water intrusion



2. The working groups

Ecology

desertification & illegal waste dumps

- **already existing data**
inventory, revision, update & storage on digital support
- **remote sensing**
analyse of physical and ecological surface parameters
- **surveying and mapping**
determination of soil properties and land use
& Regional specification of marine fauna of the Sahel coastal area

2. The working groups

Epidemiology

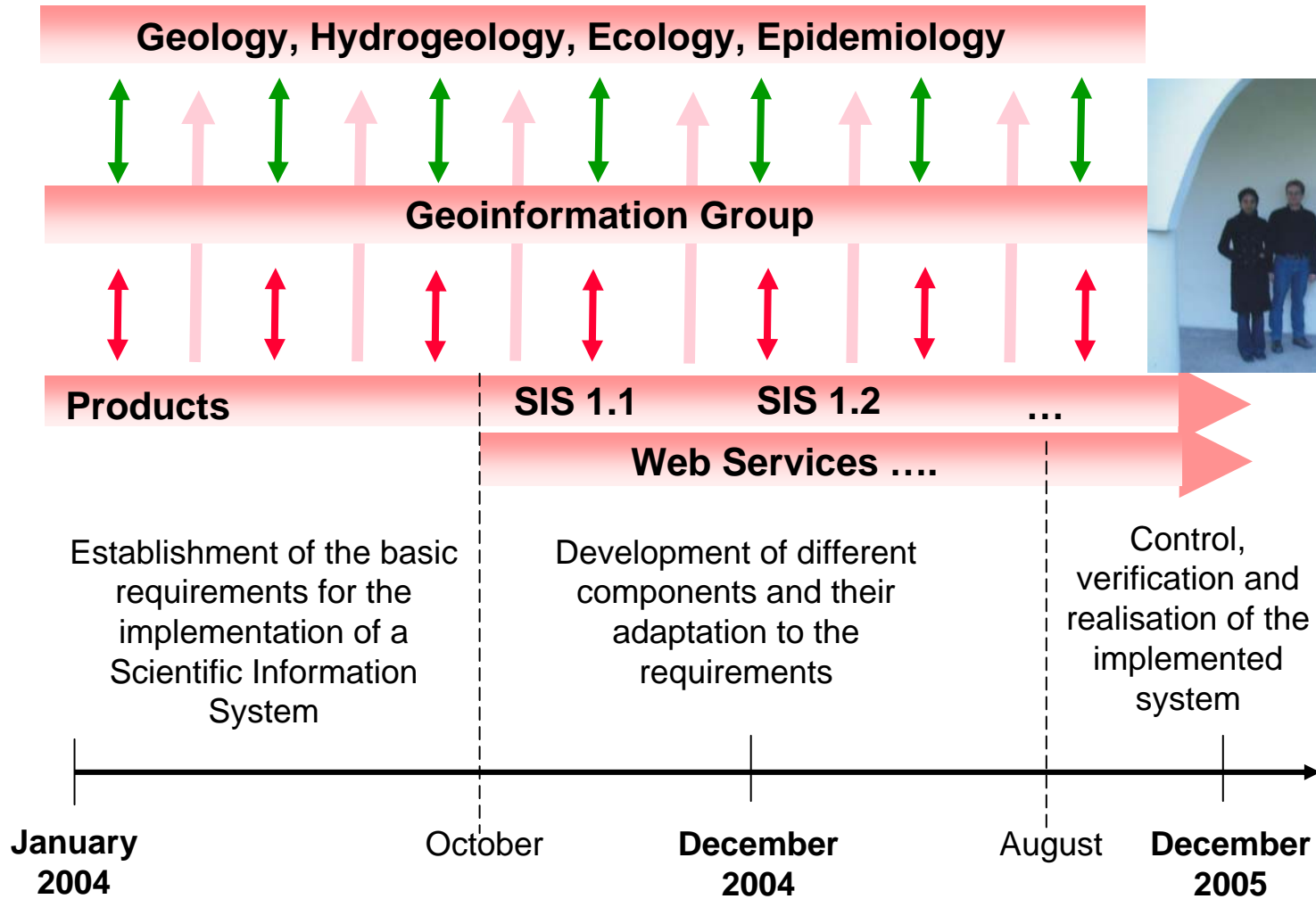
waste management & Health

- **already existing data**
 inventory, revision, update & storage on digital support
- **investigations**
 actual situation of the public health of the endangered population
 impact of solid and fluid waste on the population and of polluted water from illegal waste dumps
- **physical examinations**
 800 people, living in endangered areas
- **cytogenetic examinations**
 30 people, living in endangered areas

Infectious diseases  genetic modifications

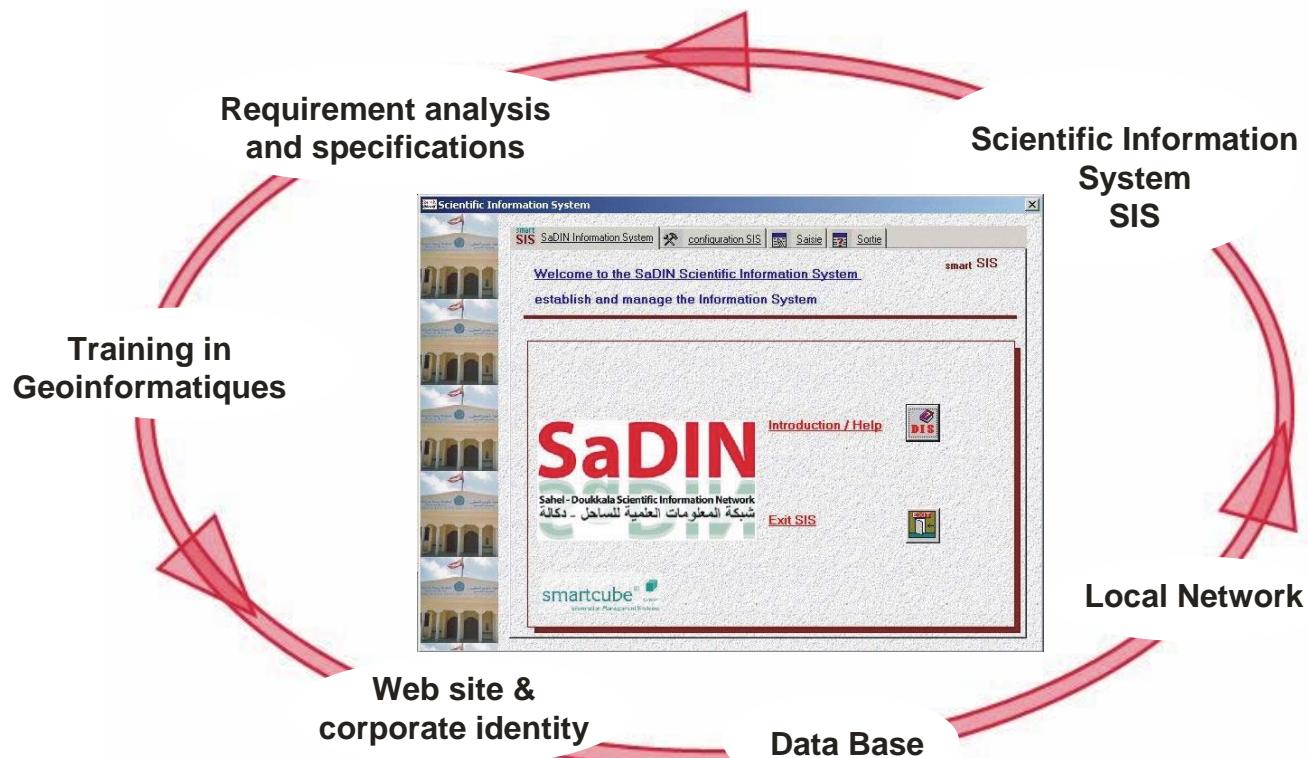


3. The data & information system



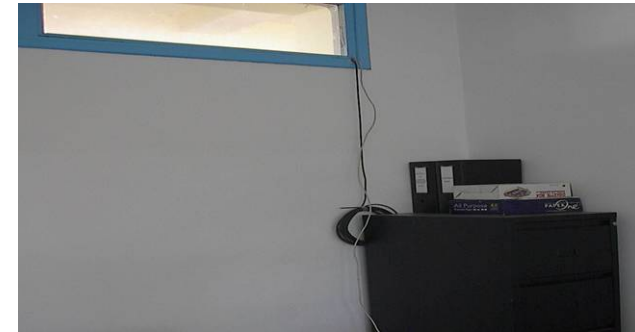
3. The data & information system

January – October 2004



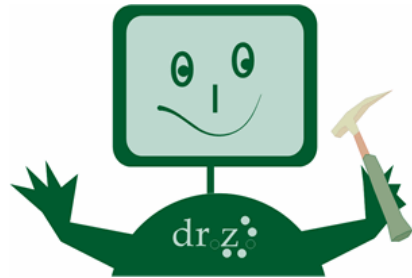
Establishment of the basic requirements for the implementation of a Scientific Information System

3. The data & information system

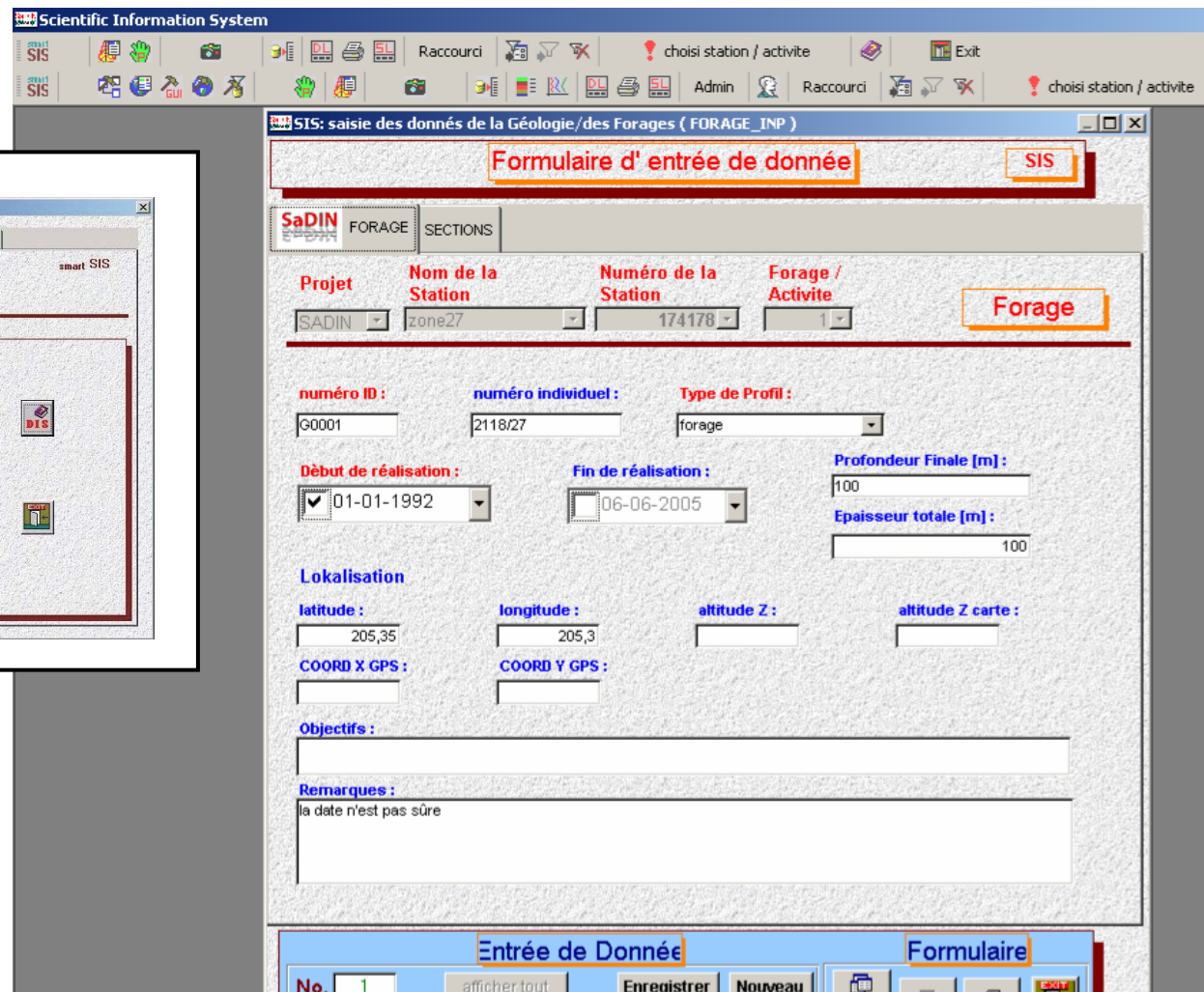
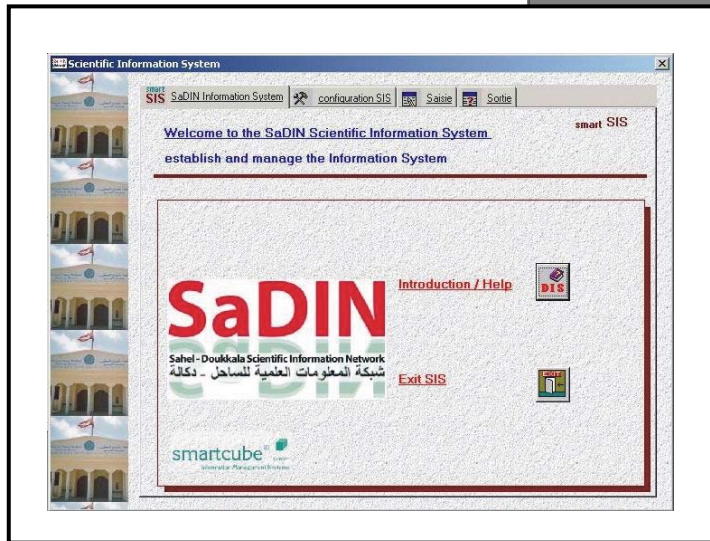


3. The data & information system

Training in Geoinformatics



3. The data & information system

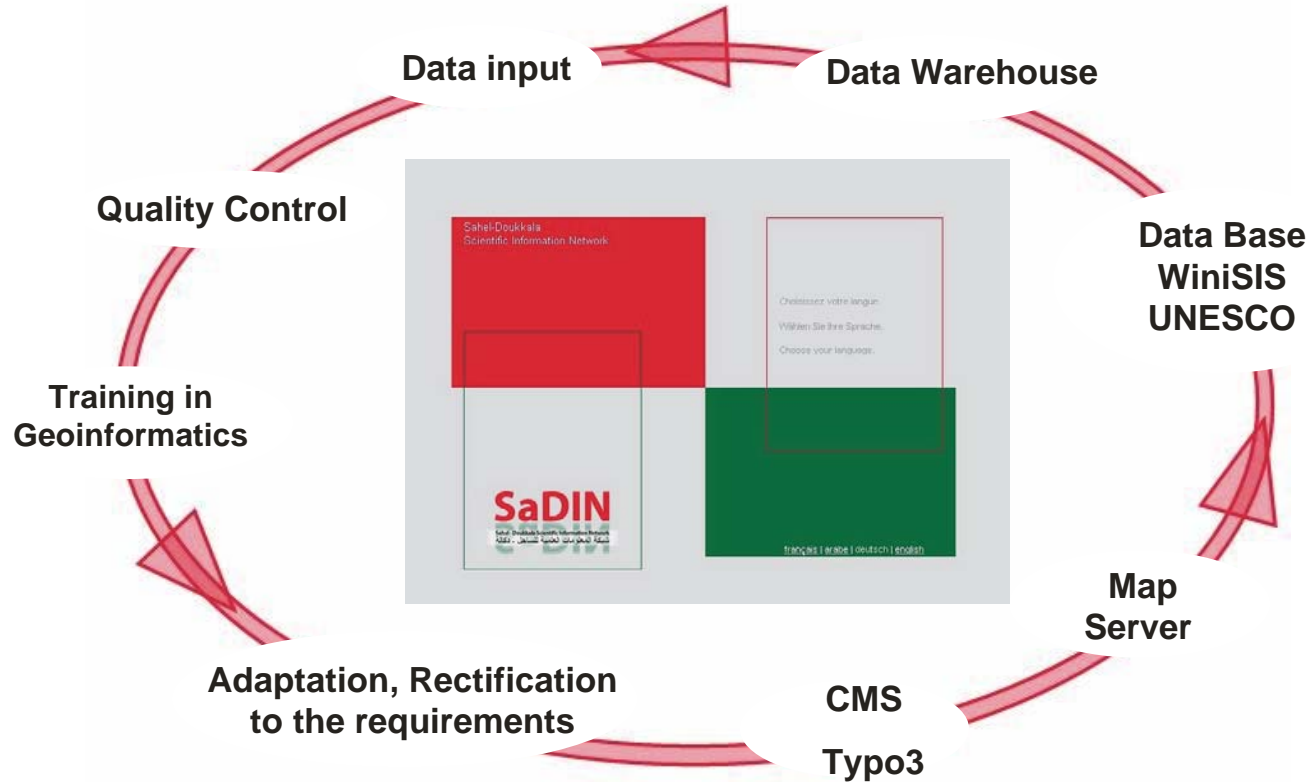


SIS

The Scientific Information System

3. The data & information system

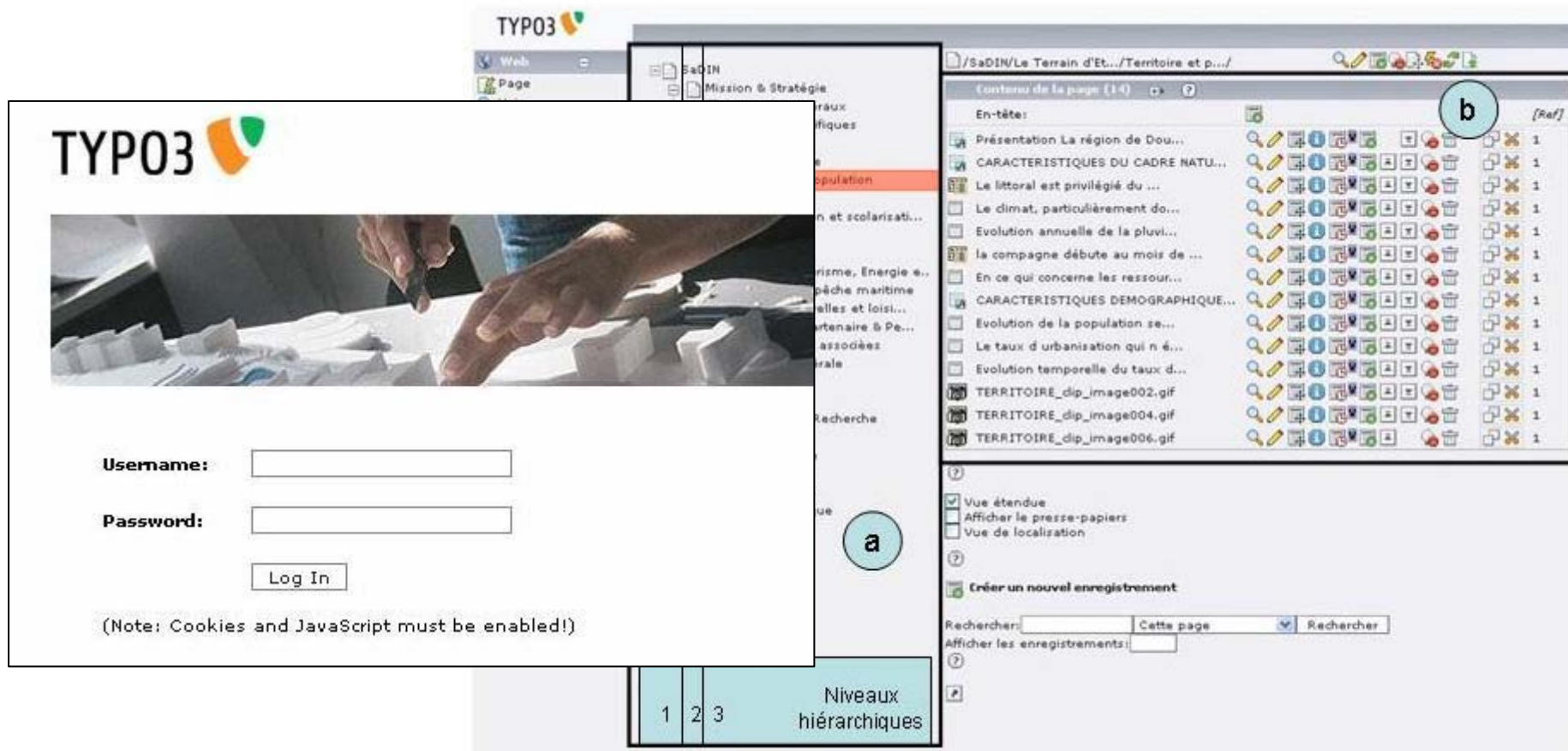
November 2004 – August 2005



Development of different components and their adaptation to the requirements

3. The data & information system

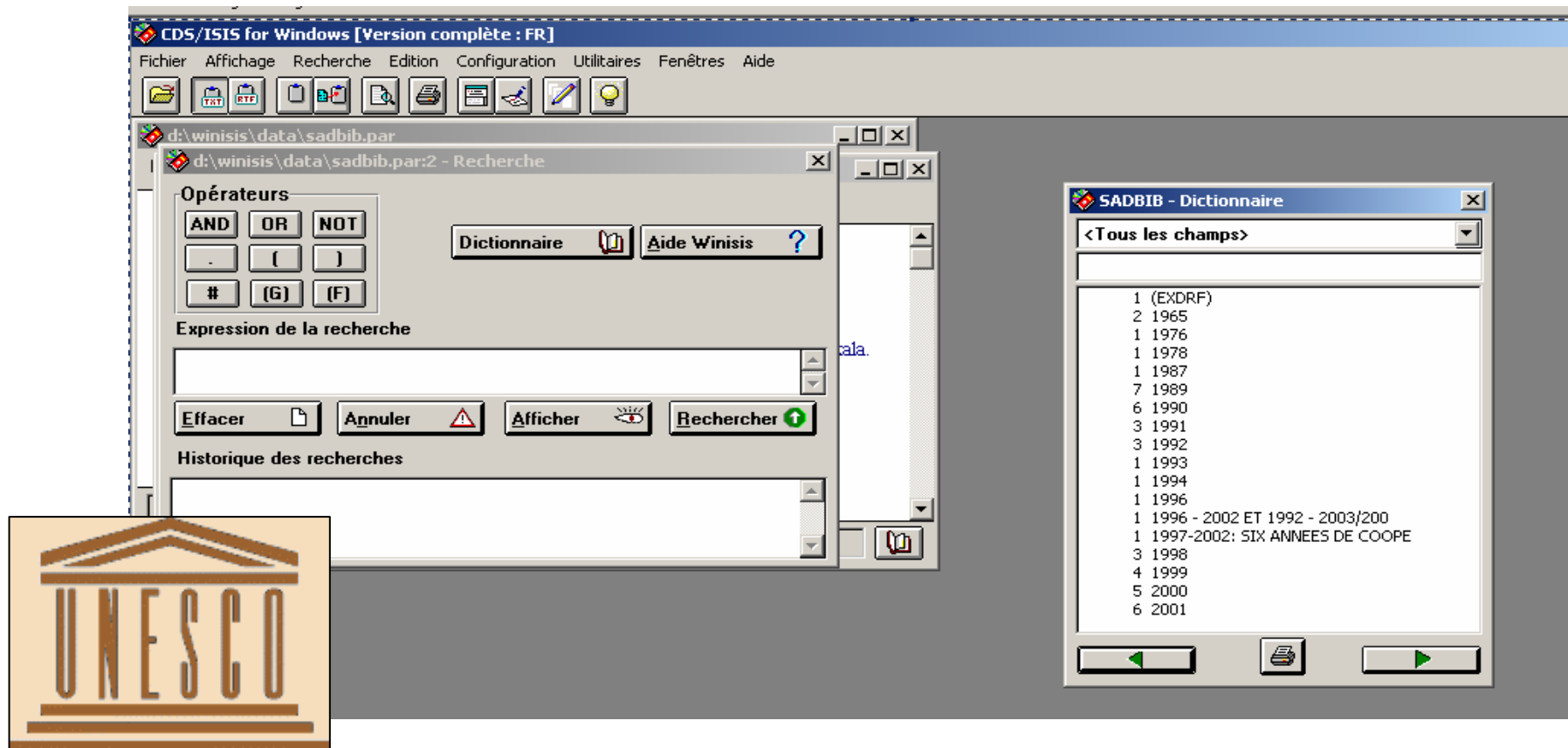
free software



Content Management System (CMS) & Wiki

3. The data & information system

free software

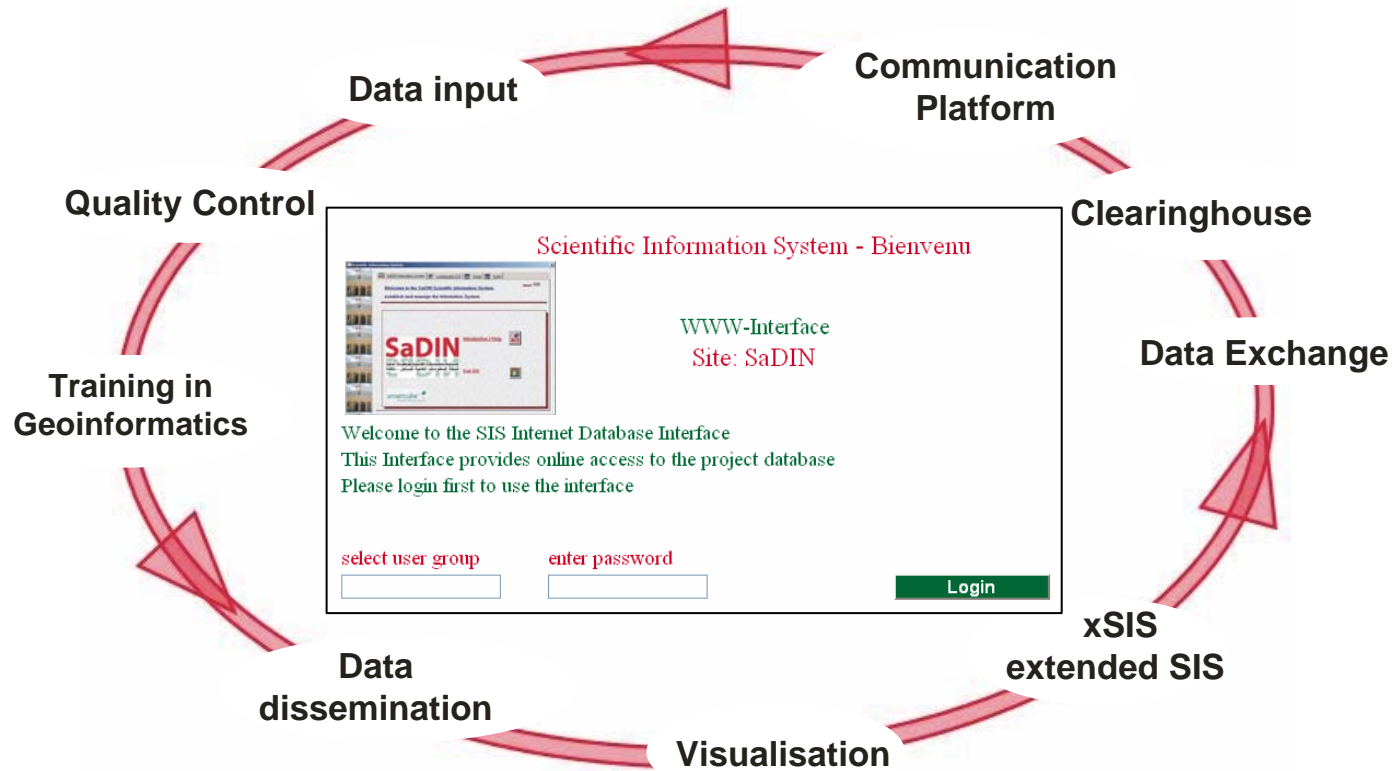


www.unesco.org/webworld/isis

Bibliographic database

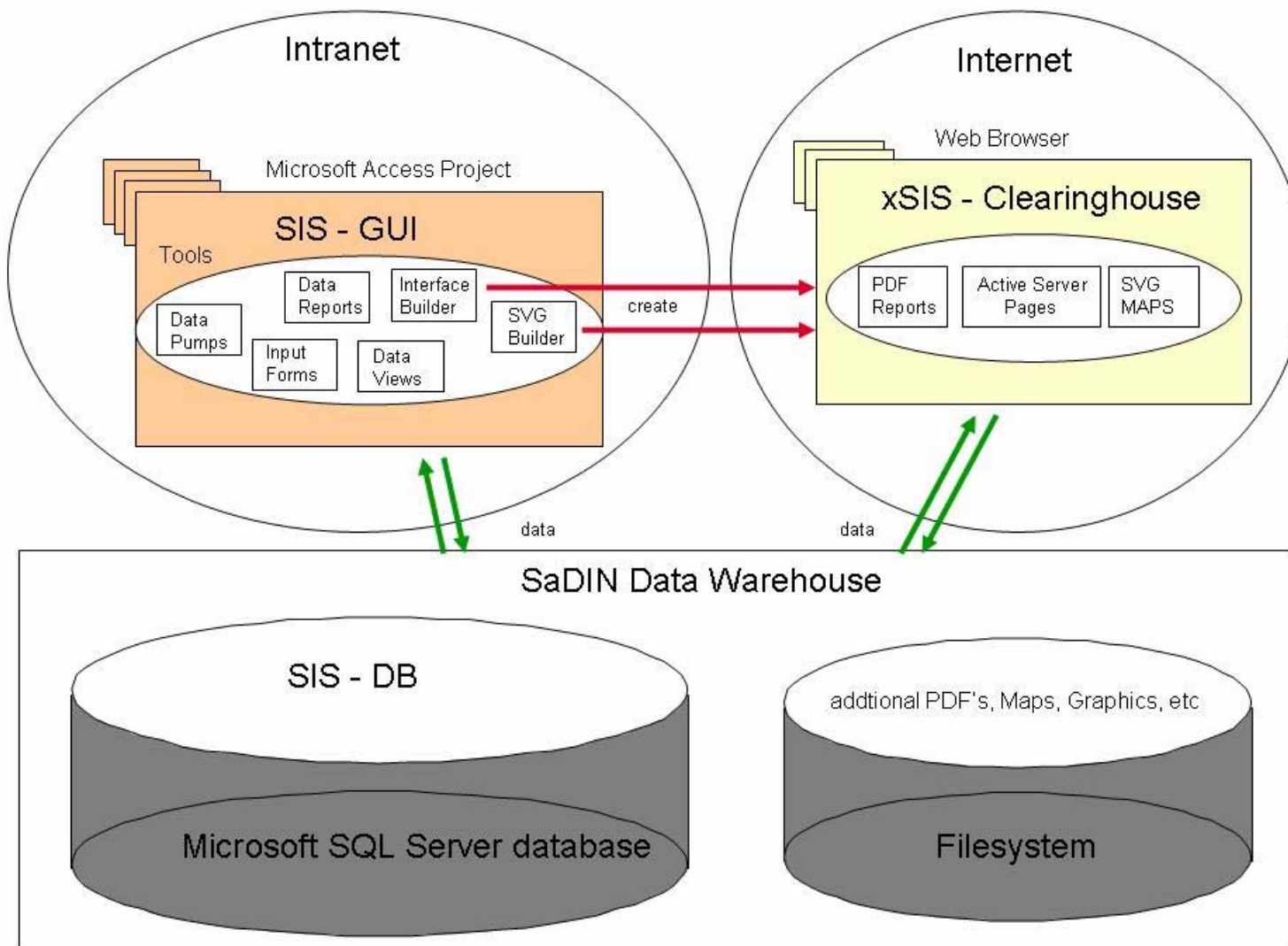
3. The data & information system

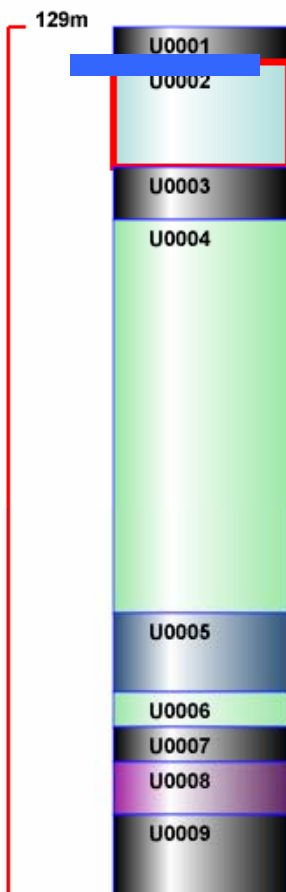
September - December 2005



Control, verification and realisation of the implemented online system

3. The data & information system





Coupe Lithologique

Station / Forage : 185151 / G4154

unité : U0002

Lithologie : argile

altitude : 128 - 124 m épaisseur : 4 m

classe lithologique : roches sédimentaires type lithologique : argile

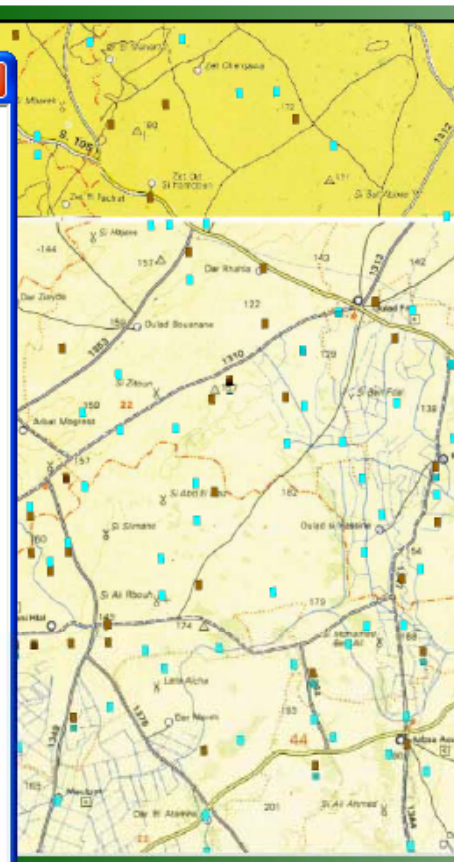
système stratigraphique : Quaternaire

série stratigraphique : Quaternaire

couleur : rougeâtre

description : Argile marneuses rougeâtre avec quelques passages de calcaires silicifiés

*déplacez la souris au-dessous le coupe dans l'armature gauche pour mettre à jour l'information pour l'unité choisie



Zoom

300%

Layer Control

- grid de statio
- base_map
- Station pas d
- Forages
- Epidémiologic
- Ecologique
- Hydrogéologi
- Océanograph

The extended Scientific Information System

- PROJET
- INVENTAIRE

Echantillons

Na : 236.33 mg/l 10.28 méq/l



Ca2 : 92 mg/l 4.6 méq/l



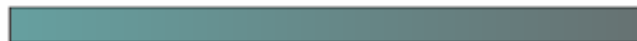
Mg2 : 34.8 mg/l 2.88 méq/l



K : 2.75 mg/l .14 méq/l



CL : 497 mg/l 14 méq/l



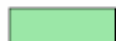
HCO3 : 274.5 mg/l 4.5 méq/l



SO4 : 70.12 mg/l 1.46 méq/l



NO3 : 60.48 mg/l .98 méq/l



Hydrogéologie

station / analyse : 185158 / HG0038

province : El Jadida

commune : Mogress

point de prélènant : puits

date : 27/04/2004 16:35:10

niveau statique : 75.8

usage : Domestique

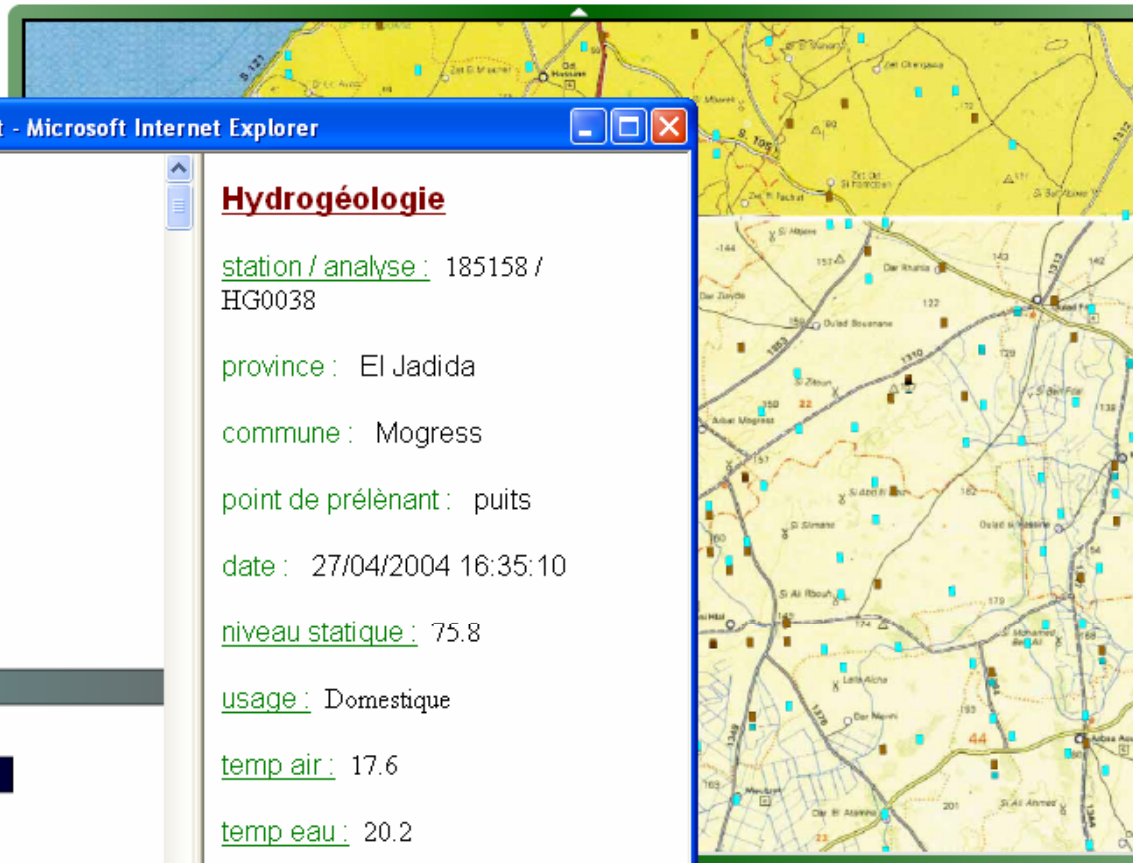
temp air : 17.6

temp eau : 20.2

pH : 7.55

condition electr. : 1.79

*déplacez / clique la souris au-dessous le coupe dans l'armature gauche pour mettre à jour l'information pour l'unité choisie



Zoom

300%

Overview

Layer Control

- grid de statio
- base_map
- Station pas d
- Forages
- Epidémiologic
- Ecologique
- Hydrogéologi
- Océanograph

SIS Aperçu: Epidémiologie

Projet: Station: Activité: Apply Select a Field: Apply Set PageSize: Apply **Get XmlData**
 1 177178 1 **Get Data** Numéro de Dossier **Show/Hide** 20 **set Pagesize** **Get AsciiData**

ID Station	ID Activité	Numéro de Dossier	nom	prénom	code	commune	type de commune	date	sexe	classe d'âge	âge exacte	durée résidence	etat civil	nombre enfants	enfants vivants masculin	enfants vivants féminins	enfants décédés masculin	enfant décédé féminin
177178	1	2				Sidi Smail	R	17/03/2004	m		57	5 à 9	marie(e)	7				
177178	1	16				Sidi Smail	R	05/05/2004	m		16	+15	celibataire	0				
177178	1	17				Sidi Smail	R	05/05/2004	m		24	-5	marie(e)	0				
177178	1	18				Sidi Smail	R	05/05/2004	f		24	5 à 9	marie(e)	2				
177178	1	19				Sidi Smail	R	05/05/2004	f		46	+ 15	marie(e)	6				
177178	1	20				Sidi Smail	R	05/05/2004	f		68	+ 15	marie(e)	4				
177178	1	21				Sidi Smail	R	05/05/2004	m		15	10 à 14	celibataire	0				
177178	1	103				Sidi Smail	R	28/04/2004	f		13	10 à 14	celibataire	0				
177178	1	106				Sidi Smail	R	23/03/2004	m		2	-5	celibataire	0				
177178	1	108				Sidi Smail	R	23/03/2004	m		10	5 à 9	celibataire	0				
177178	1	110				Sidi Smail	R	05/05/2004	m		44	+ 15	marie(e)	6				
177178	1	111				Sidi Smail	R	05/05/2004	m		10	5 à 9	celibataire	0				
177178	1	112				Sidi Smail	R	05/05/2004	f		13	10 à 14	celibataire	0				
177178	1	113				Sidi Smail	R	05/05/2004	m		2	-5	celibataire	0				

Prev Next

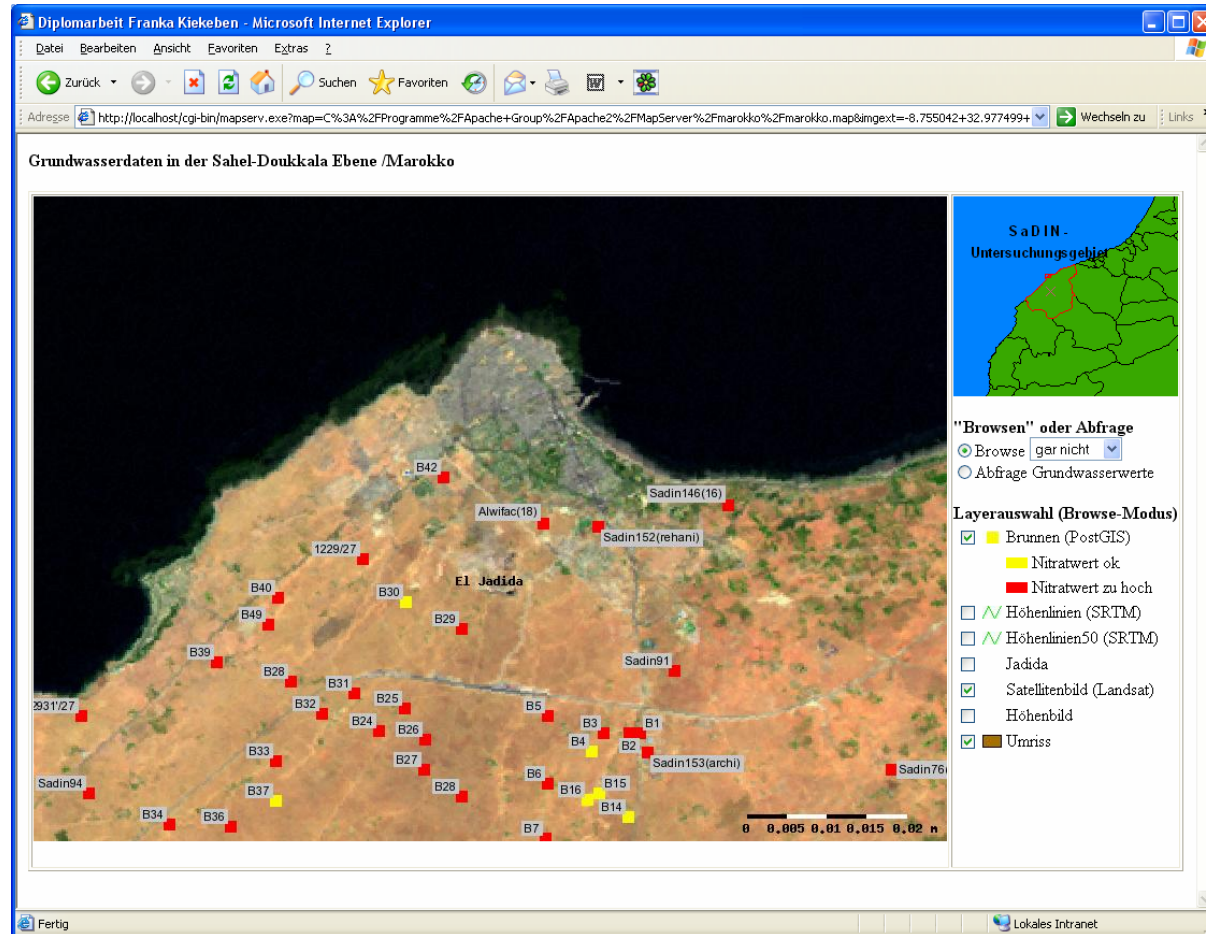
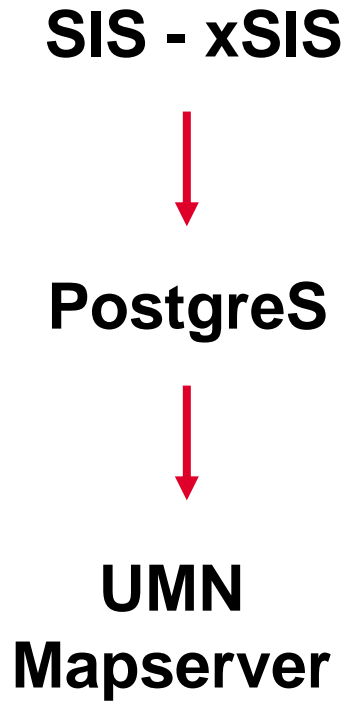
CurrentPage = 1 Pagecount = 1 Show numeric pager

Select a Field1: Criterion: Value: Sorted by: Field: Apply:
 Numéro de Dossier = Numéro de Dossier ASC **Apply Filter**



3. The data & information system

Software/data costs: 0,- €



Results

- **Data and Information Center “La Salle SaDIN”**
- **Scientific Information System (SIS, xSIS)**
- **A first collection/archive of all available data of the Sahel-Doukkala region**
- **Bibliographic Database (Winisis)**
- **Bridging the gap between research and local authorities**
- **Introducing New Media for professional research management**

Problems

- Technical Problems
- Administratif problems
- “Acceptance” of New Technologies *(Not only in Morocco)*
- **Development of services simultaneously to data production**
- **Commercial software**
- **“Acceptance” of free available software & data**

Characteristics

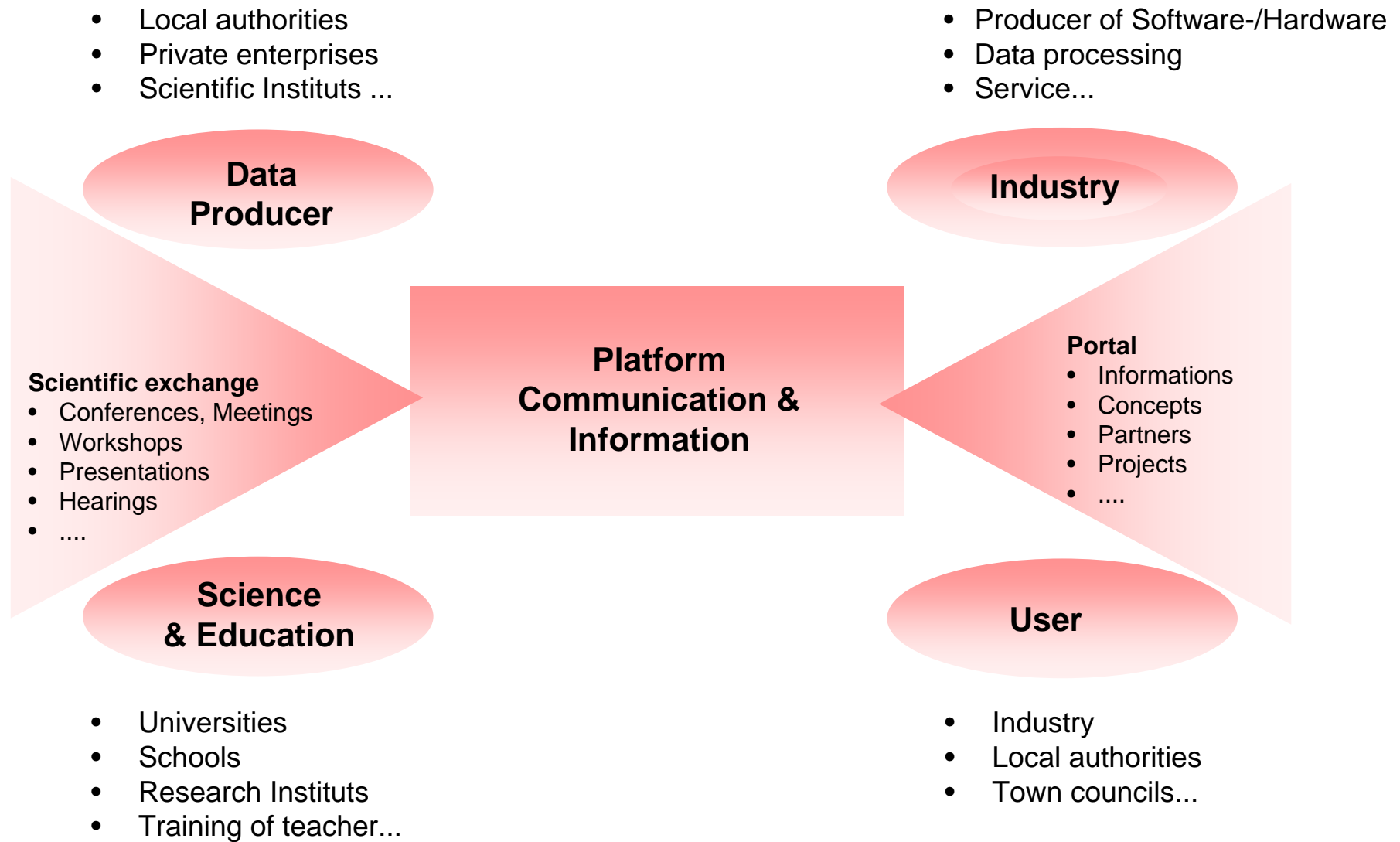
- open source products & commercial software
- exchangeable with worldwide community (standards)
- capability to integrate data (standards)
- open and freely accesible
- open to any kind of interfaces and other IS

Could be a part of an
African Spatial Data Infrastructure

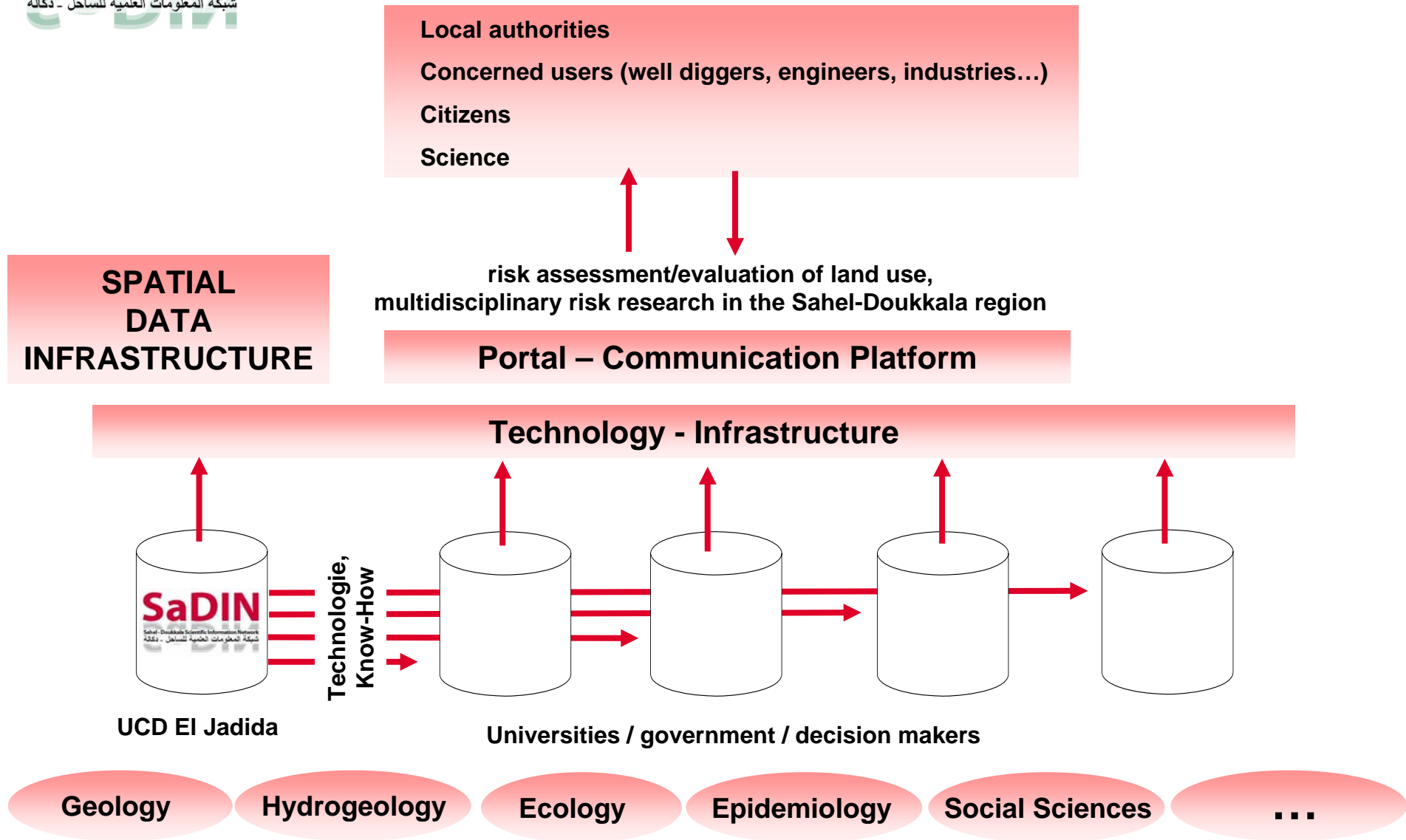
4. SaDIN – what could it be in the future



4. SaDIN – what could it be in the future



4. SaDIN – what could it be in the future



4. SaDIN – what could it be in the future

merging local efforts...

Partners





www.sadin.org

Contact

Abdellatif Souhel
Université Chouaïb
Doukkali
Département de Géologie
B.P. 20 El Jadida
24 000 MAROC
Souhel@ucd.ac.ma

Ralf Löwner
GeoForschungsZentrum Potsdam
Daten- und Rechenzentrum
Telegrafenberg A3
14473 Potsdam
Tel.:++49/(0)331-288 1709
loewner@gfz-potsdam.de

Frank Krysiak
smartcube® GmbH
Informations-
Managementsysteme
Rohrlegerweg 61 A
12351 Berlin
fk@smartcube.de

References

www.ucd.ac.ma/fs/departements/geologie
www.gfz-potsdam.de
www.icdp-online.de
www.smartcube.de

