

**BeiDou/GNSS-based Agricultural Machinery
Navigation and Big Data Application**

**Caicong Wu, Ph.D., Professor
China Agricultural University**

1. Hot Applications

The development of smart agriculture and intelligent machinery needs BeiDou. BeiDou has been widely used in the agricultural field, promoting the upgrading of agricultural machinery and the process of agricultural modernization.



Automatic steering



Operation monitoring



Remote maintenance

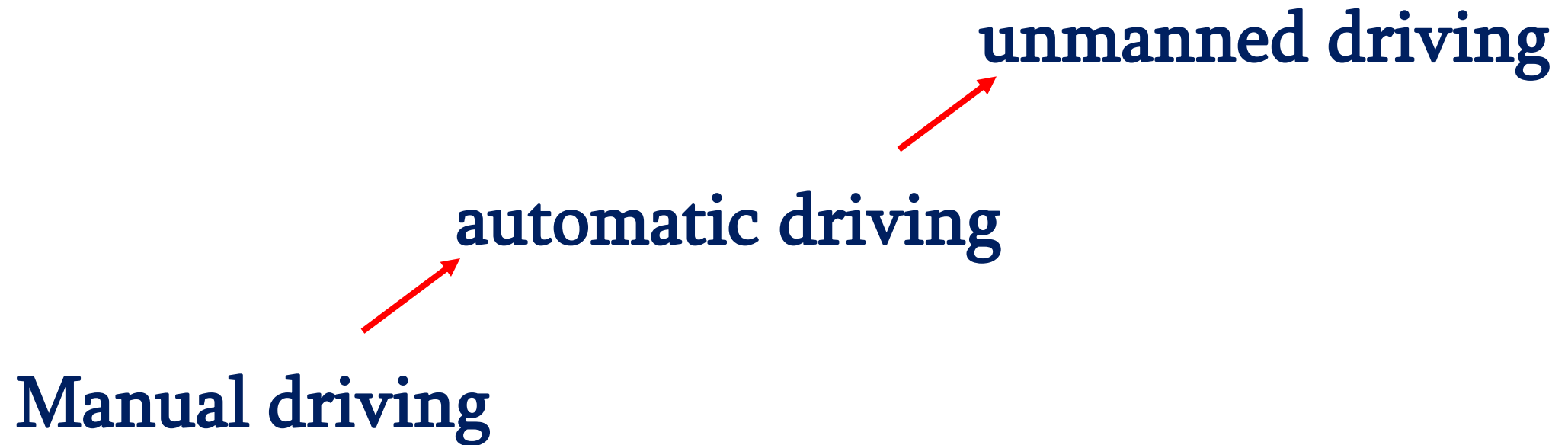


UAV plant protection



Marine fishery

2. Navigation of agricultural machinery



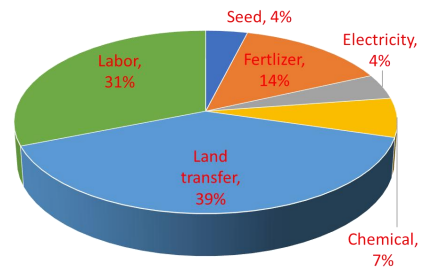
2. Navigation: unmanned driving

Skilled operator: ± 10 cm



2. Navigation: unmanned driving

Operating accuracy: ± 2.5 cm



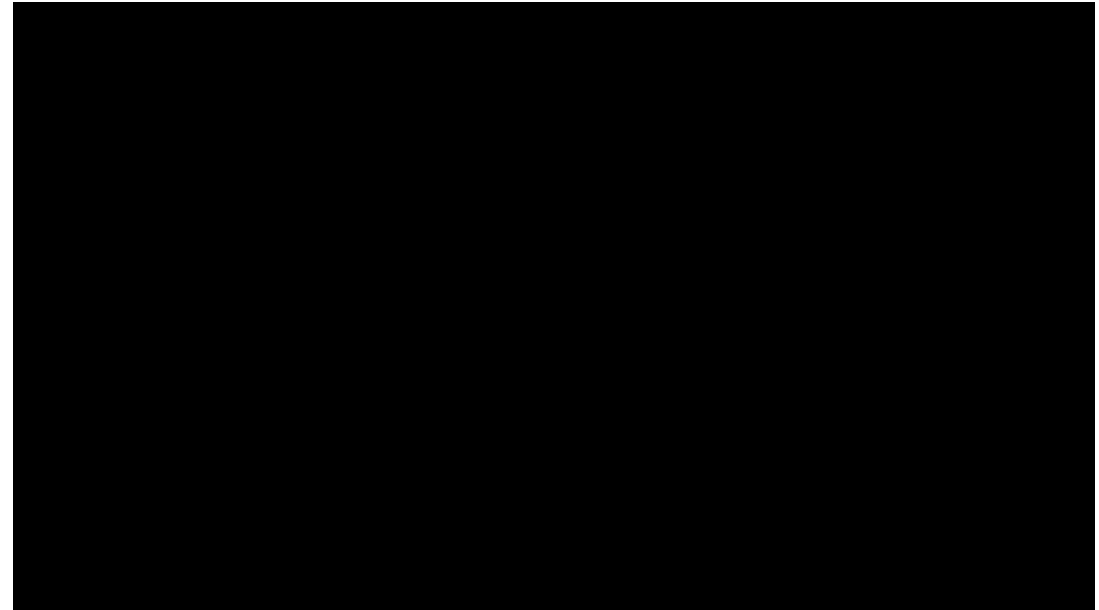
2. Navigation: unmanned driving

- Accuracy: $\pm 2.5\text{cm}$
- Improve land use: 1%~2.5%
- Expand working time



- Relief labor intensity
- Reduce labor cost: 1/2~2/3

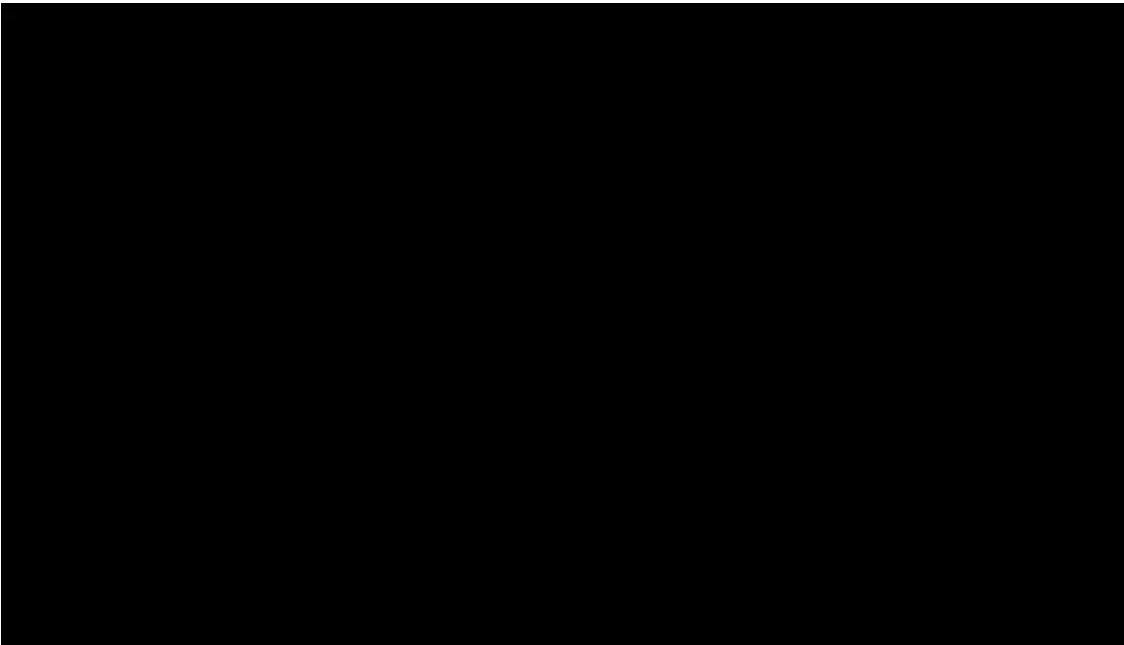
Installed terminals: $\geq 200,000$ pcs



Beidou is changing the operation mode of agriculture in China

2. Navigation: unmanned driving

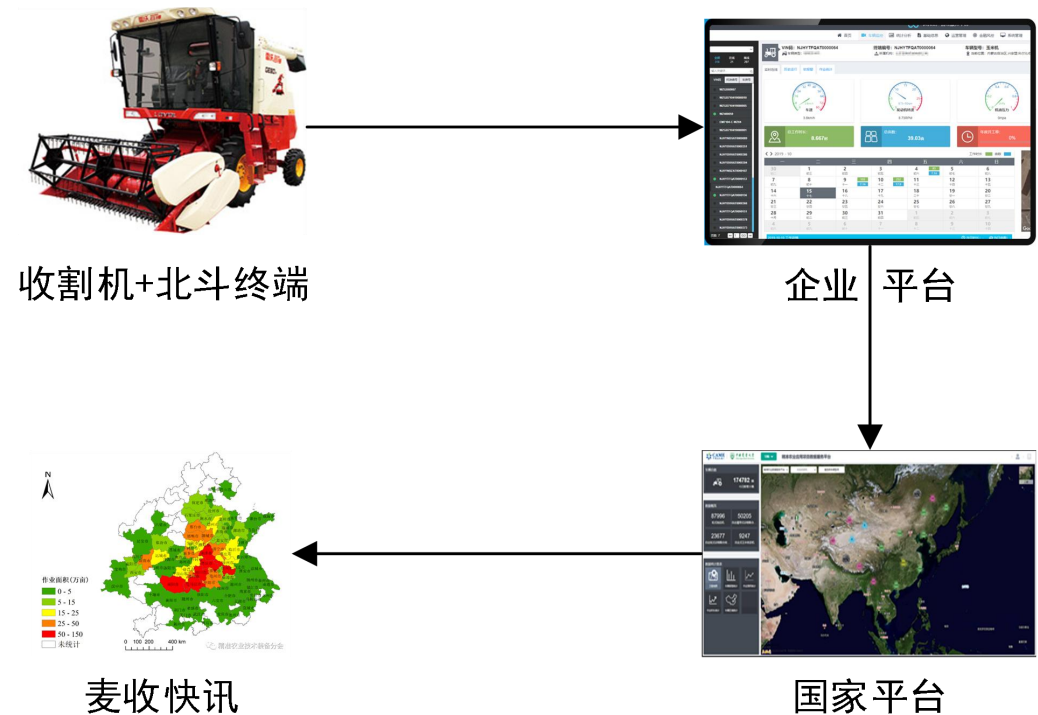
To further reduce labor force and improve automation, to realize the transformation from human to machine.



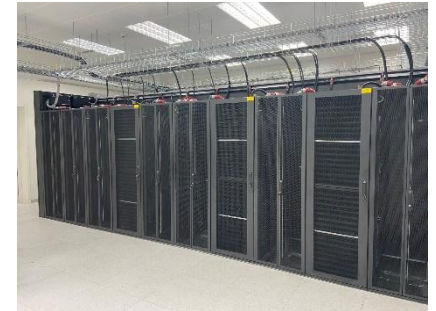
New standard: vehicle, machinery, field.....

3. Big Data Application

- China Agricultural University has accessed 530,000 BeiDou terminals from various manufacturers to form big data for agricultural machinery operation.
- In the summer of 2021 and 2022, 61 issues of “*Wheat Harvesting Newsletter*” were produced and released in combination with wheat harvesting.

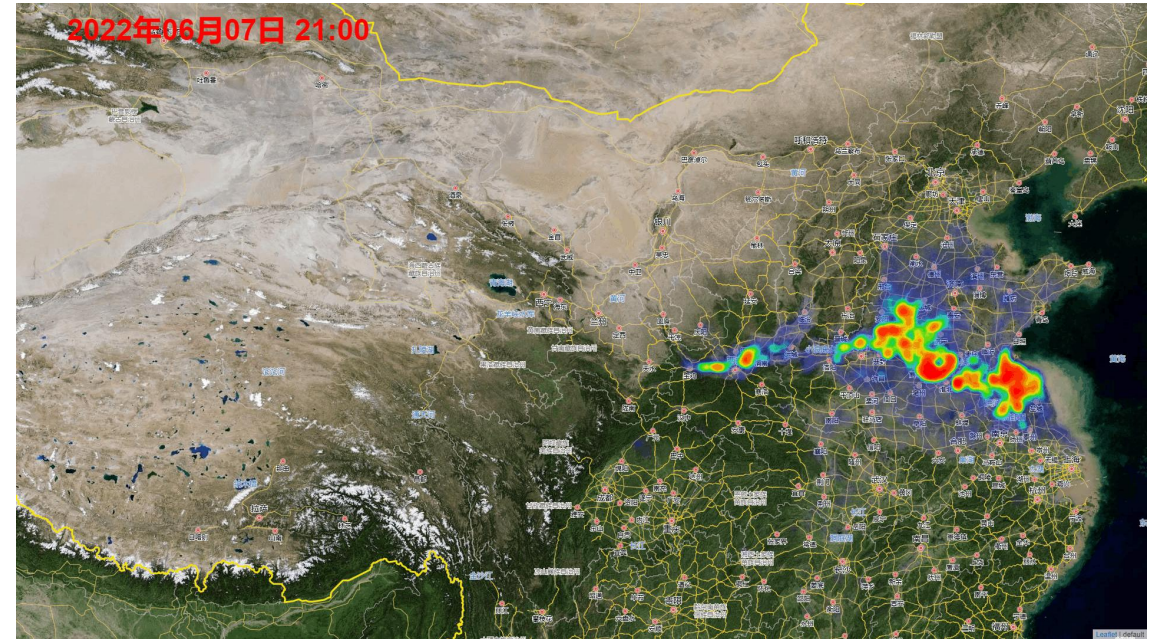
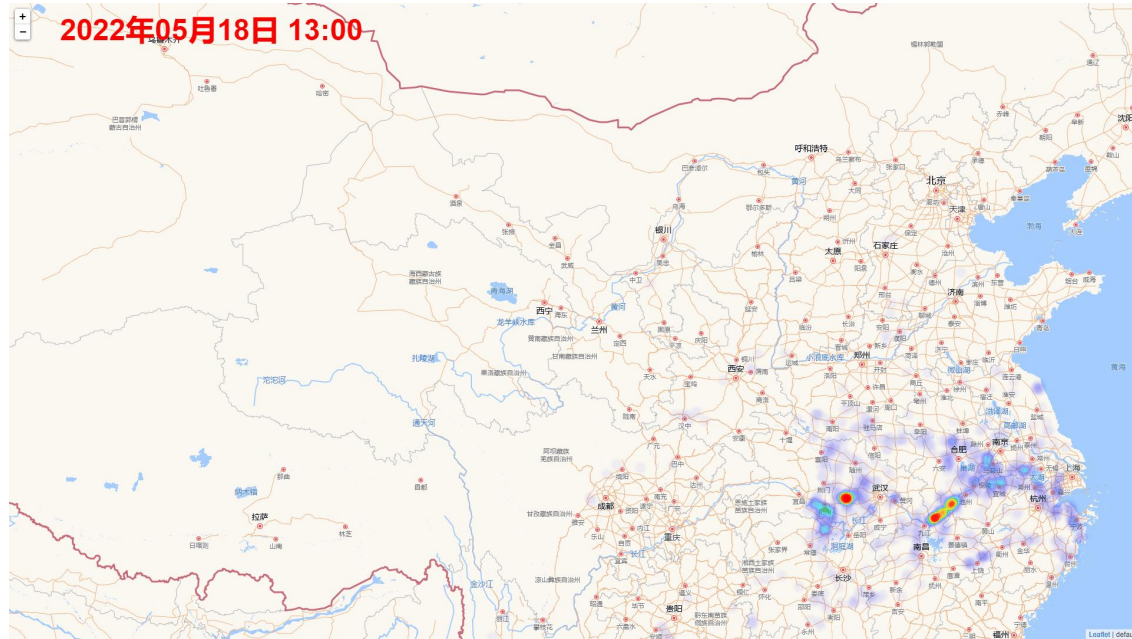


3. Big Data



3. Big Data: *Wheat Harvesting Newsletter*

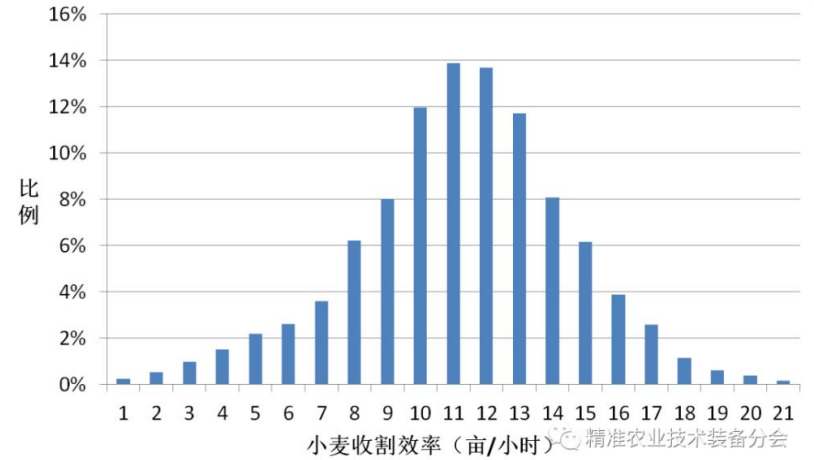
In June, the wheat combines work from south to north for one month.



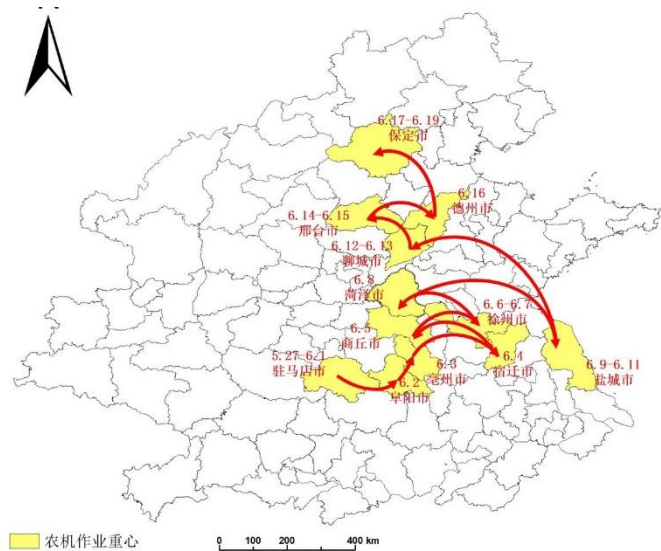
3. Big Data: *Wheat Harvesting Newsletter*



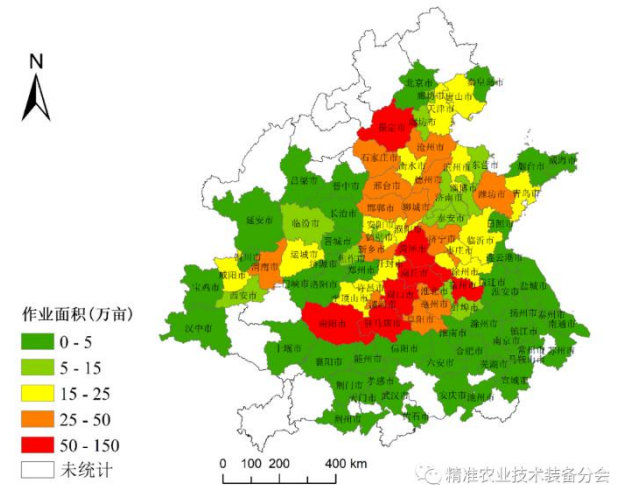
Operation duration



Operation area



Hot regions



Harvested area

3. Big Data: *Wheat Harvesting Newsletter*

The Ministry of Agriculture and Rural Affairs and CCTV-17 release hot maps and operation statistics data every day.



3. Big Data: *Wheat Harvesting Newsletter*

Big data is not only a valuable data resource, but also a new paradigm of scientific research. Big data is changing the operation, organization, and management of agricultural machinery.



To master the wheat harvest progress



To arrange harvesting operations scientifically



To allocate parts and maintenance resources around harvest hot spots

4. UAV for plant protection

By 2021, China has more than **120,000** UAVs for plant protection, with an operation area of more than **71.3** million ha, and more than **200,000** pilots. The ruling effect of aviation plant protection unified prevention is **10%~20%** higher than that of farmers' self prevention. The use of pesticides is reduced by **20%~30%**, and the utilization rate of pesticides is increased by more than **10%**.



5. Marine Fisheries Usage

- **China is a big fishing country**
 - Maritime area: 3 million sq km
 - Marine fishing vessels : about 310,000
 - Fisherman: 8 million
- **Fishery production is a high-risk industry**
 - Lack of effective tools of communication
 - Lack of effective means of rescues
- **BDS for marine fisheries**
 - Positioning
 - Short Message



5. Conclusions & Propose

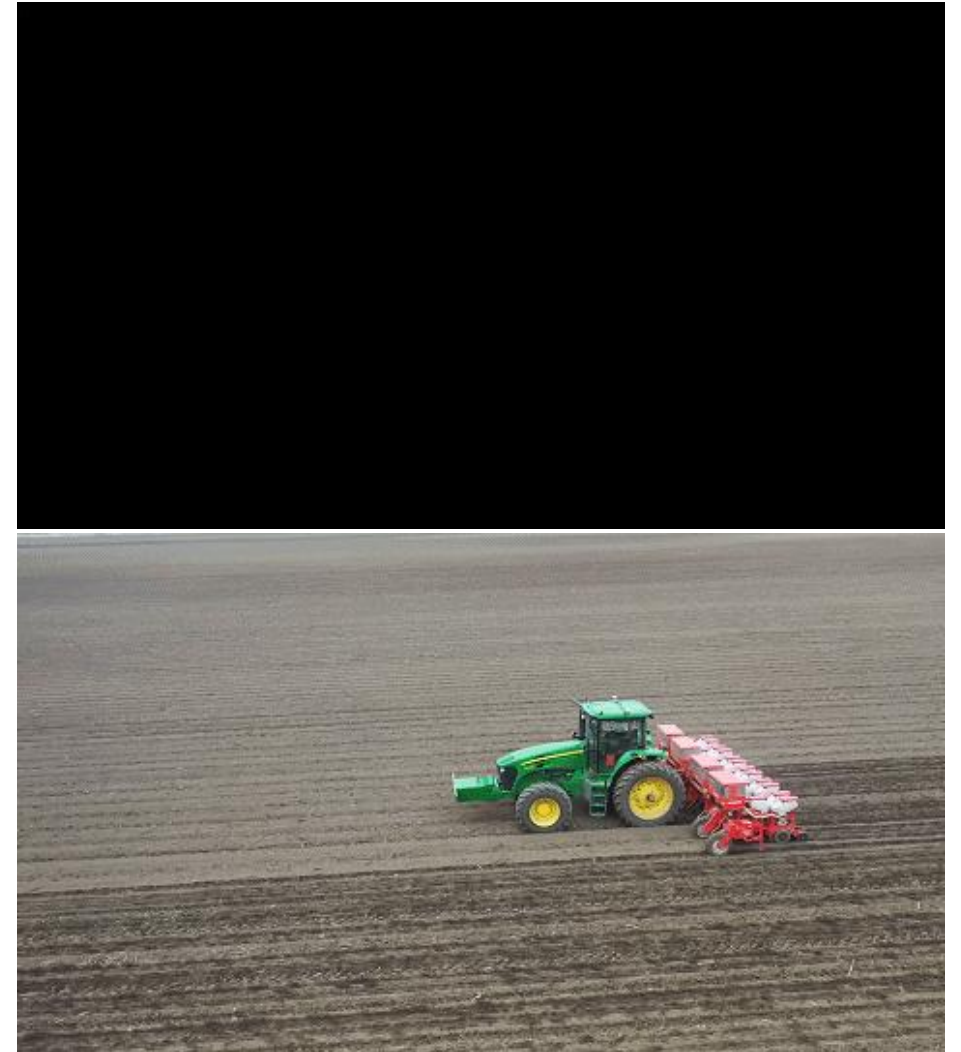
- **Conclusions:**

- BeiDou has been widely used in China's agricultural field.
- BeiDou improves the quality and efficiency of agricultural machinery operation.
- BeiDou will promote the realization of smart agriculture and intelligent machine, helping to ensure global food security.



5. Conclusions & Propose

- Proposes:
 - To carry out international cooperation in talent training about GNSS and smart agriculture.
 - To carry out precision agriculture technology demonstration to ensure food safety.
 - To plan and apply international cooperation projects between governments.



Thank you for listening!



Caicong Wu: wucc@cau.edu.cn