

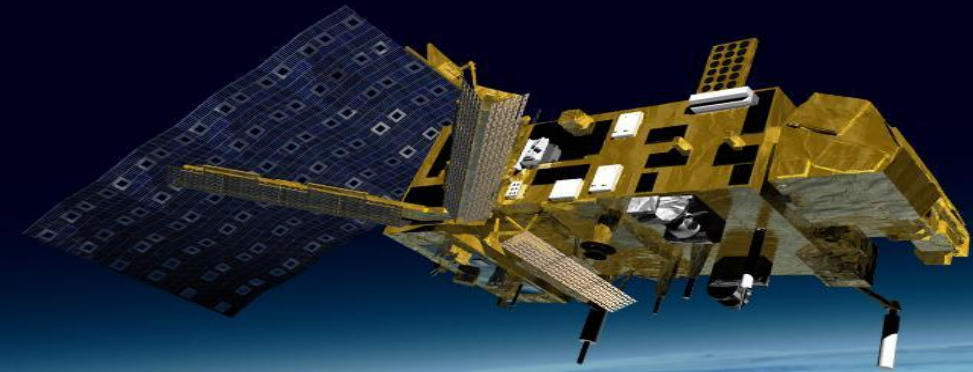


WORLD  
METEOROLOGICAL  
ORGANIZATION

Weather · Climate · Water

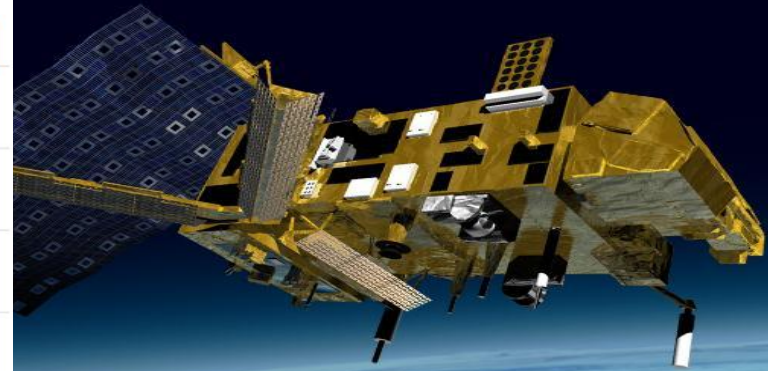
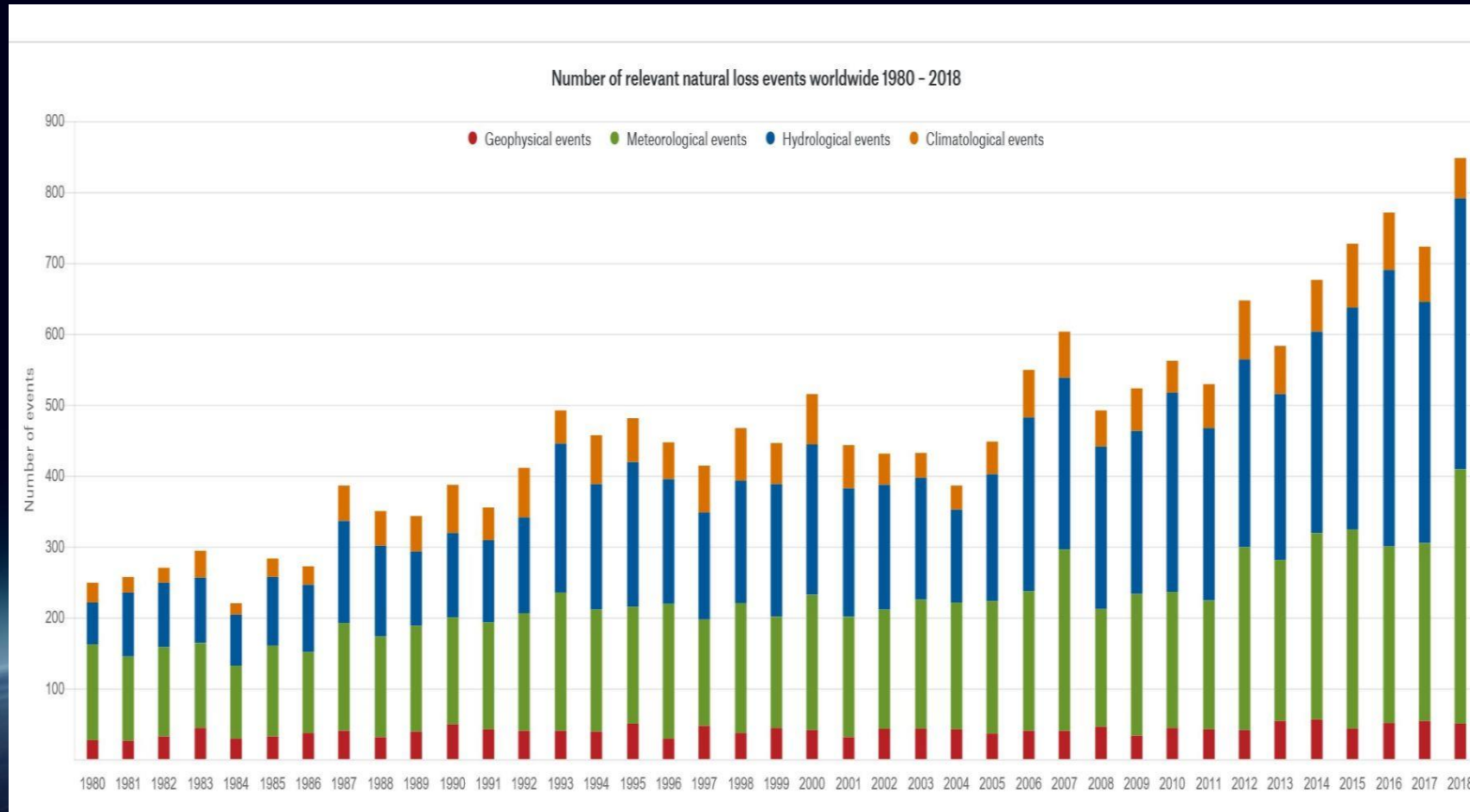
# What do countries need from satellites?

Michael Staudinger, PR of Austria to WMO





# Support to services for forecasts, warnings, climate scenarios etc.







WORLD  
METEOROLOGICAL  
ORGANIZATION

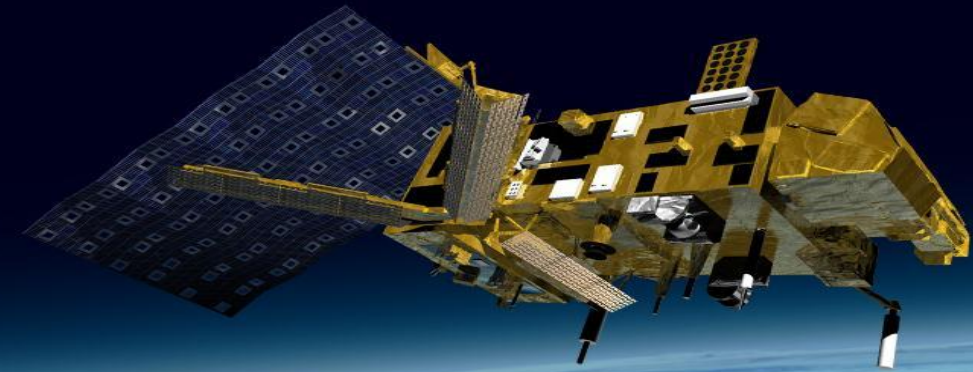
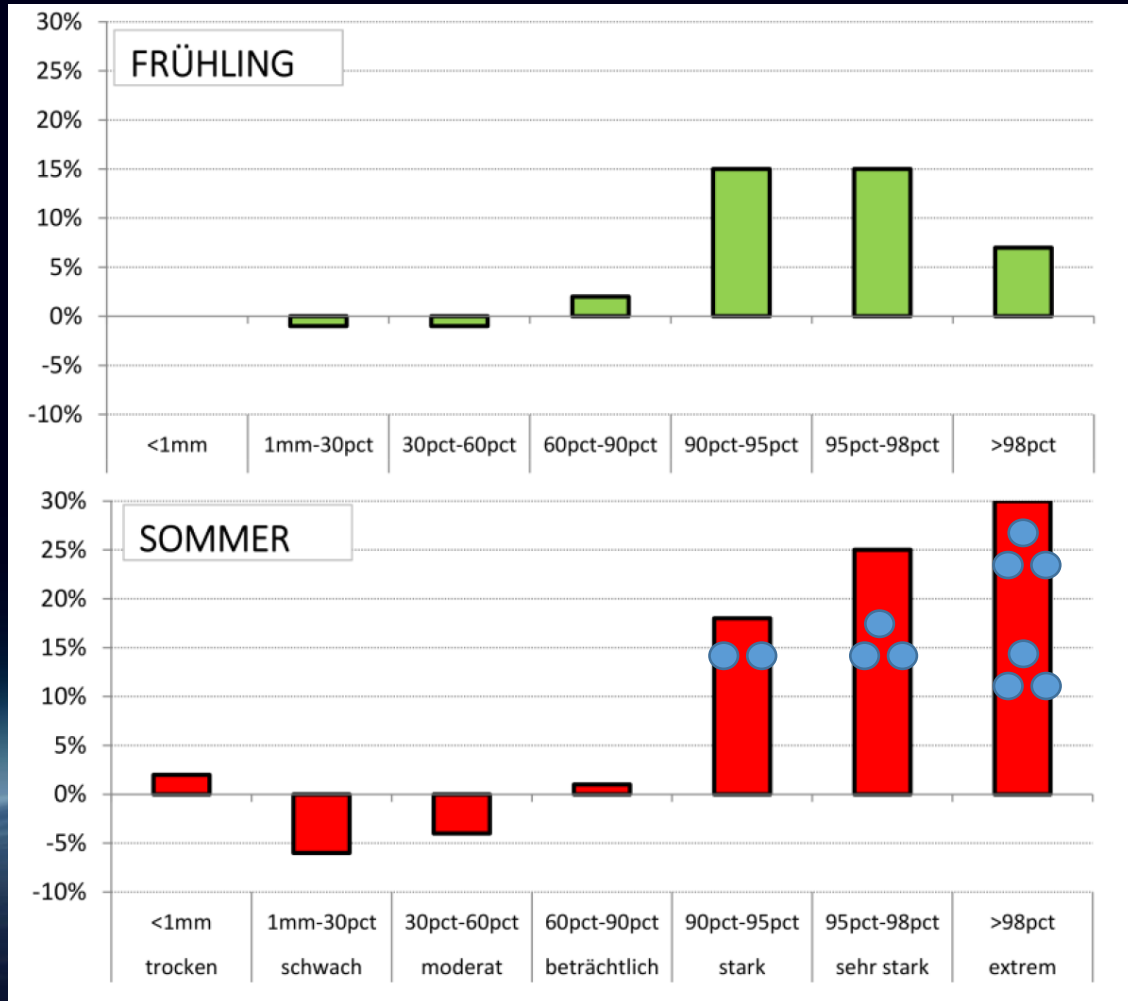
Weather · Climate · Water

Support to services for forecasts, warnings, climate scenarios etc.





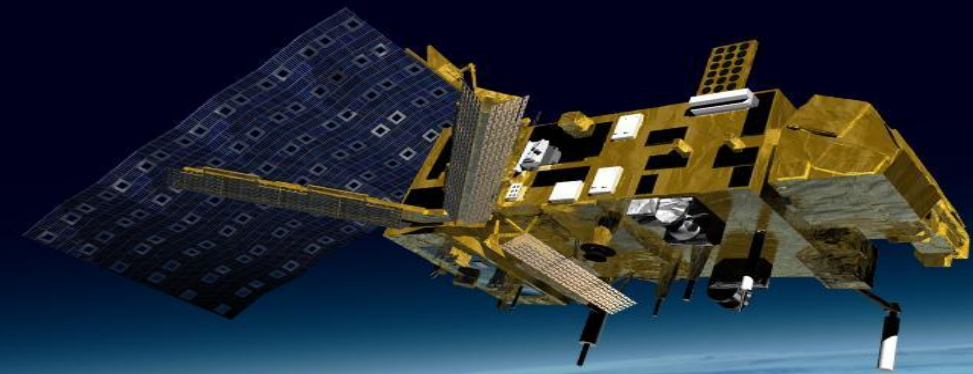
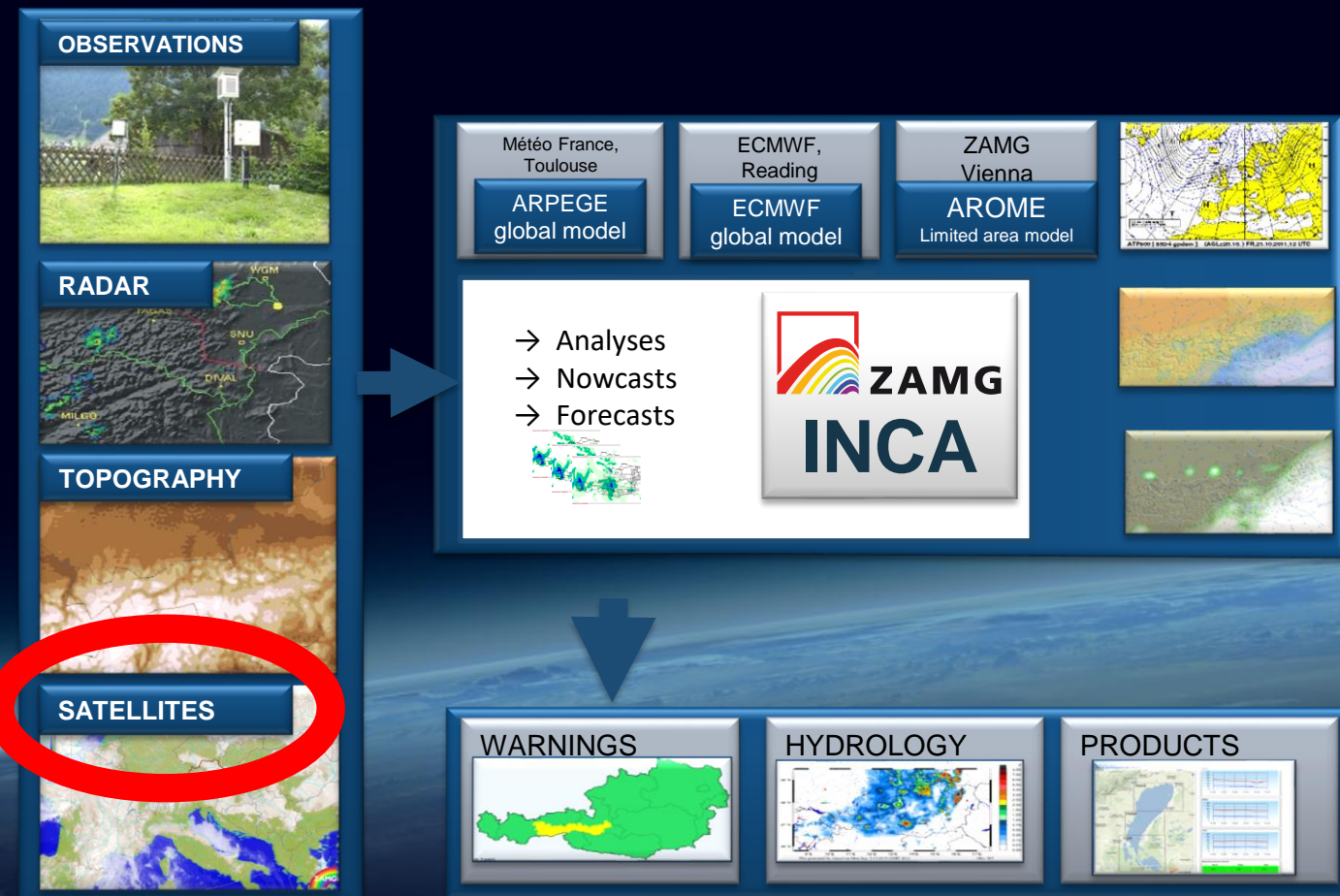
# Support to services for forecasts, warnings, climate scenarios etc.







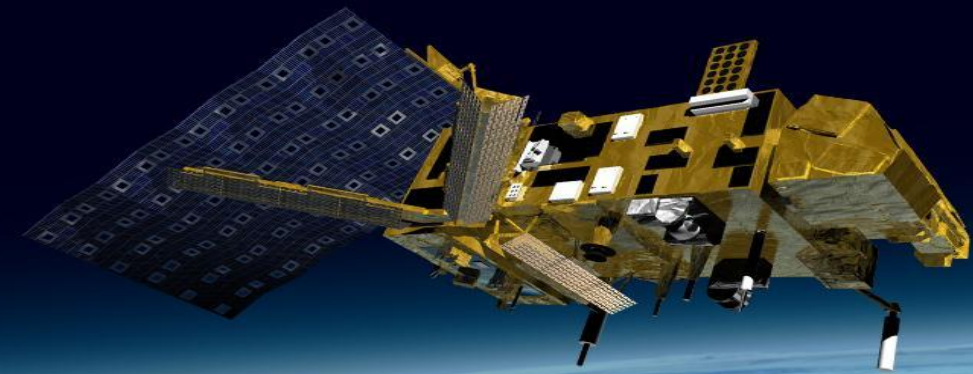
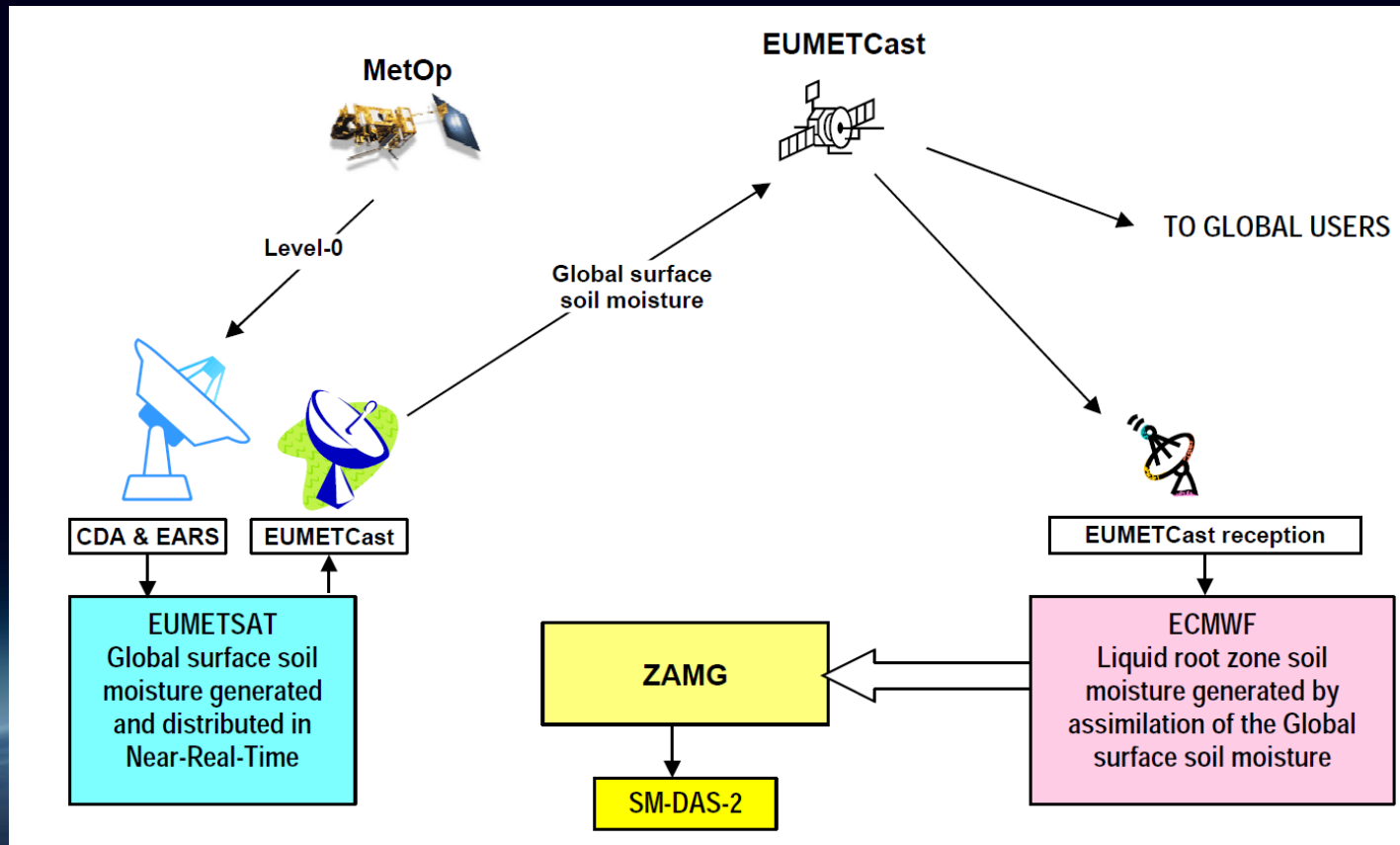
# Support to services for forecasts, warnings, climate scenarios etc.



MSG rapid scan!



# Support to services for forecasts, warnings, climate scenarios etc.



# Soil moisture

EUMETSAT SAF: Soil moisture production scheme

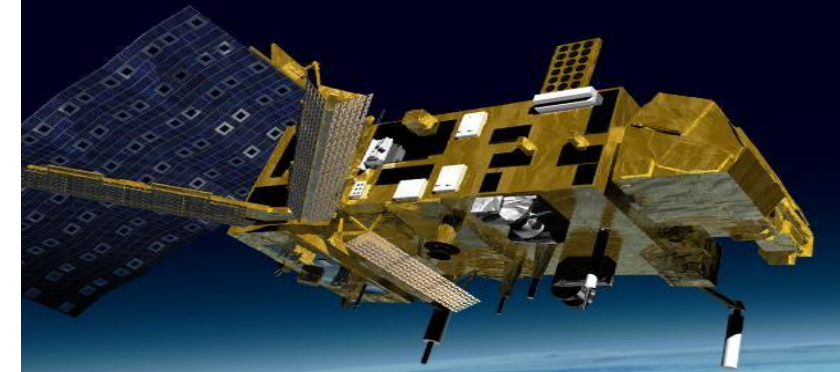
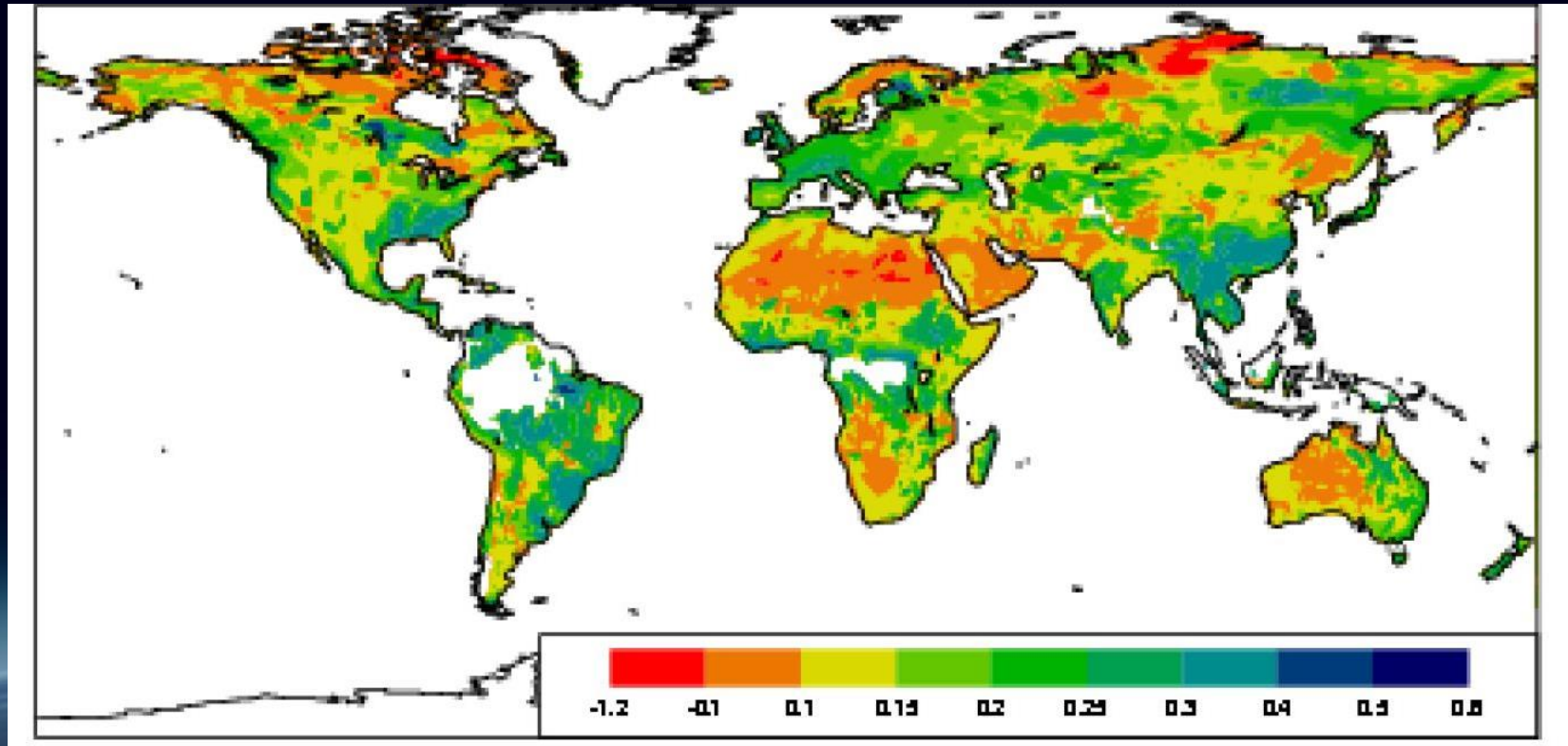




WORLD  
METEOROLOGICAL  
ORGANIZATION

Weather · Climate · Water

Support to services for forecasts, warnings, climate scenarios etc.



Input to IFS,  
Climate models

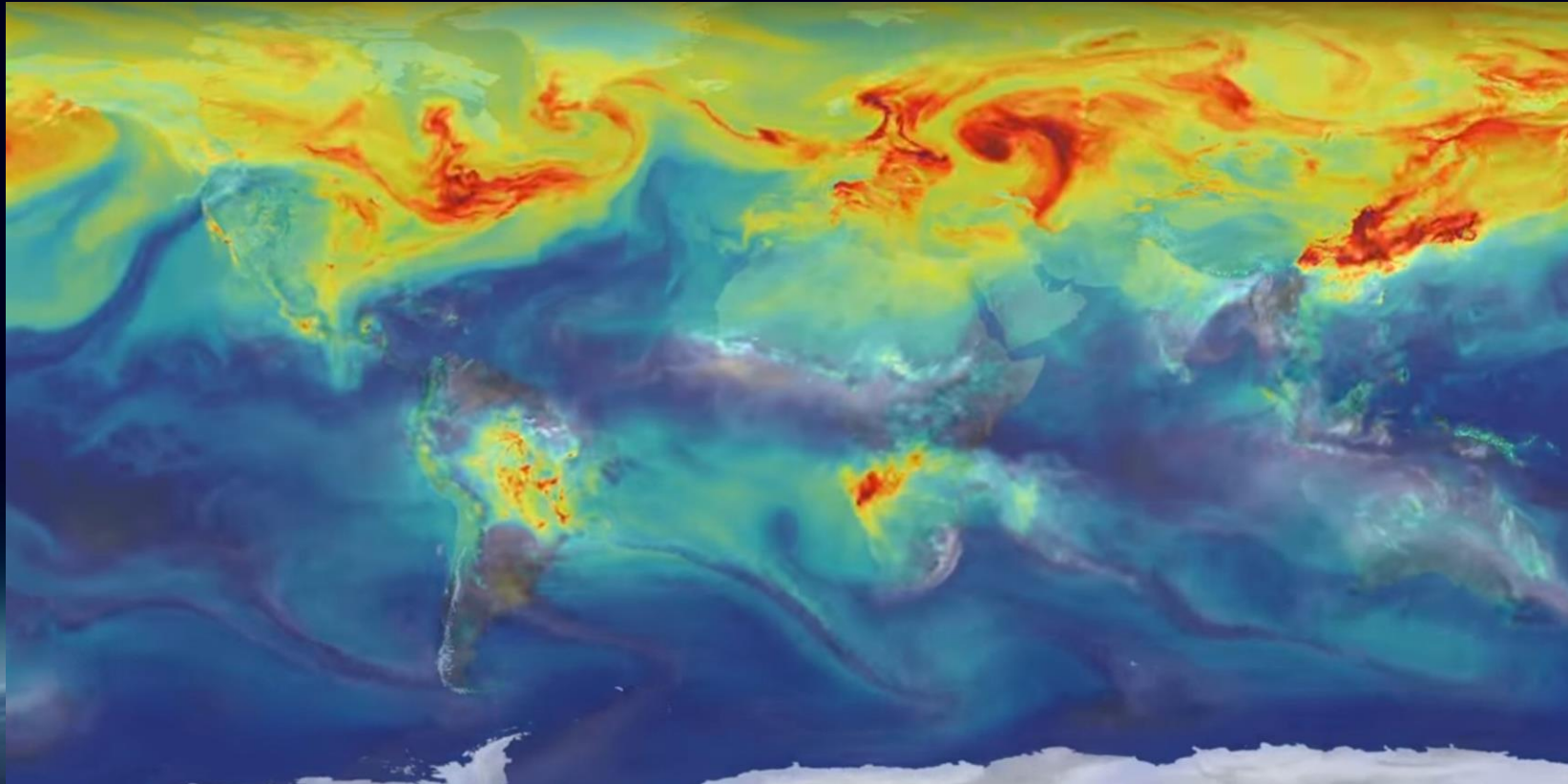
MetOp ASCAT Soil moisture for IFS, de Rosnay 2009



WORLD  
METEOROLOGICAL  
ORGANIZATION

Weather · Climate · Water

Support to services for forecasts, warnings, climate scenarios etc.



NASA OCO2

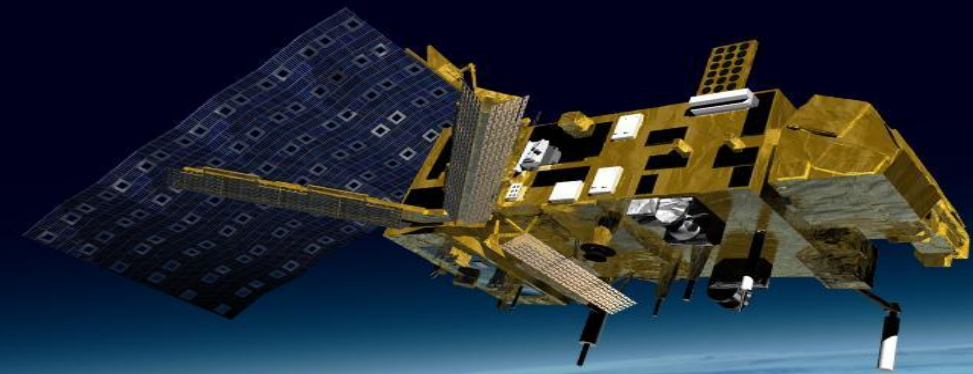
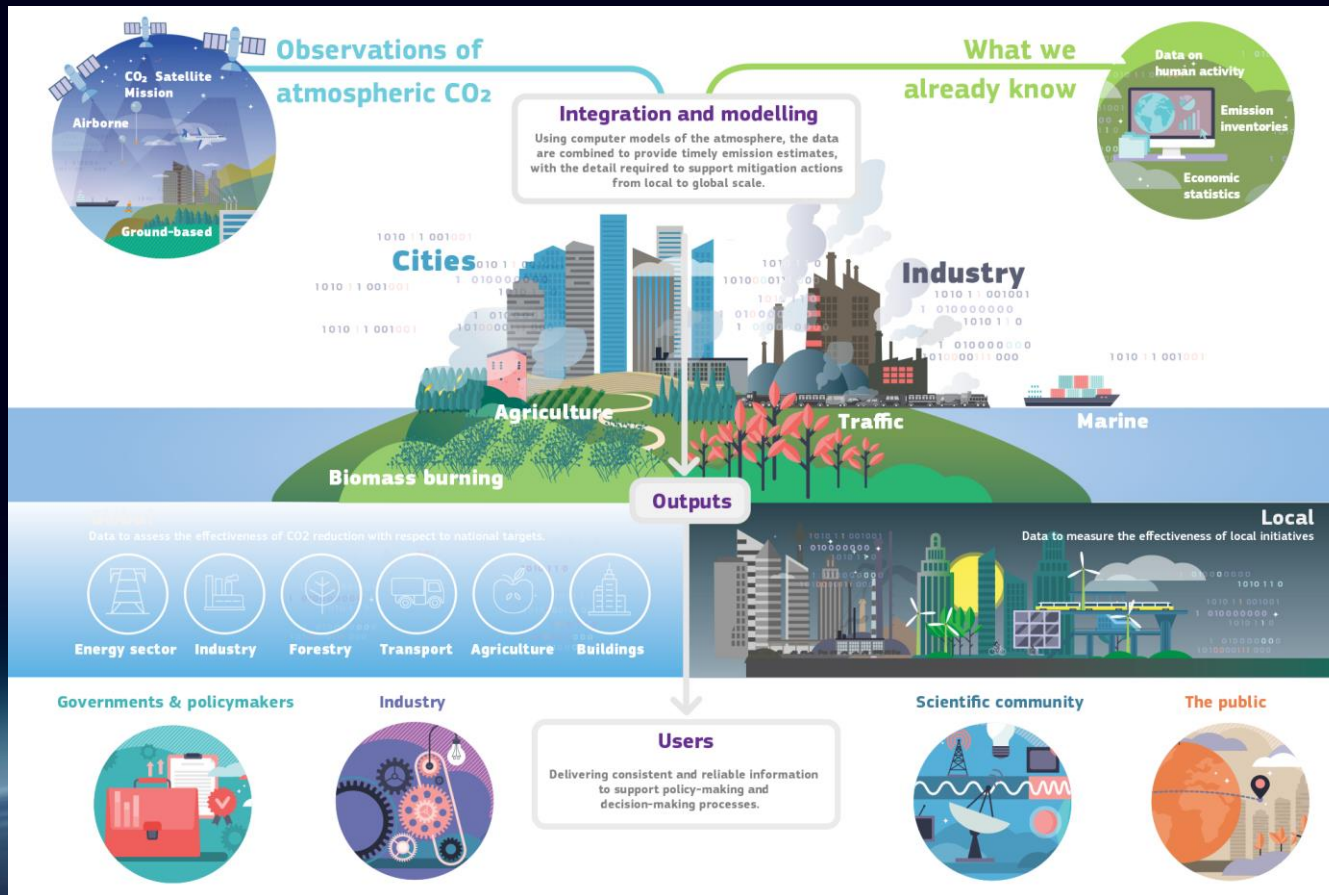


Global CO2  
concentrations





# Support to services for forecasts, warnings, climate scenarios etc.



# Global CO2 emissions

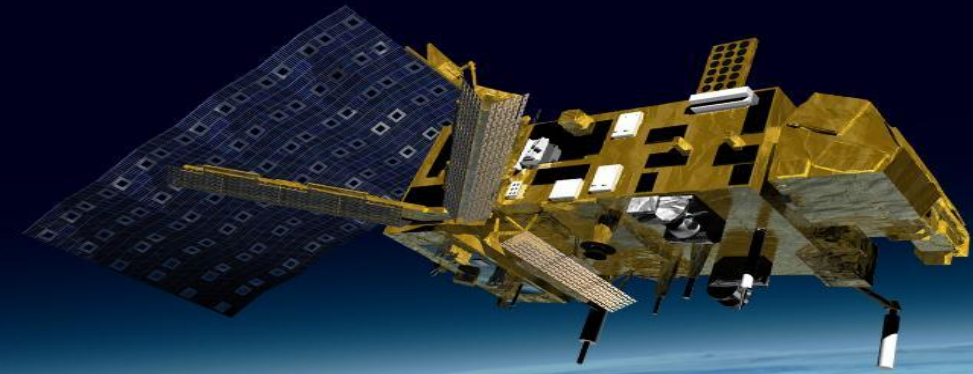
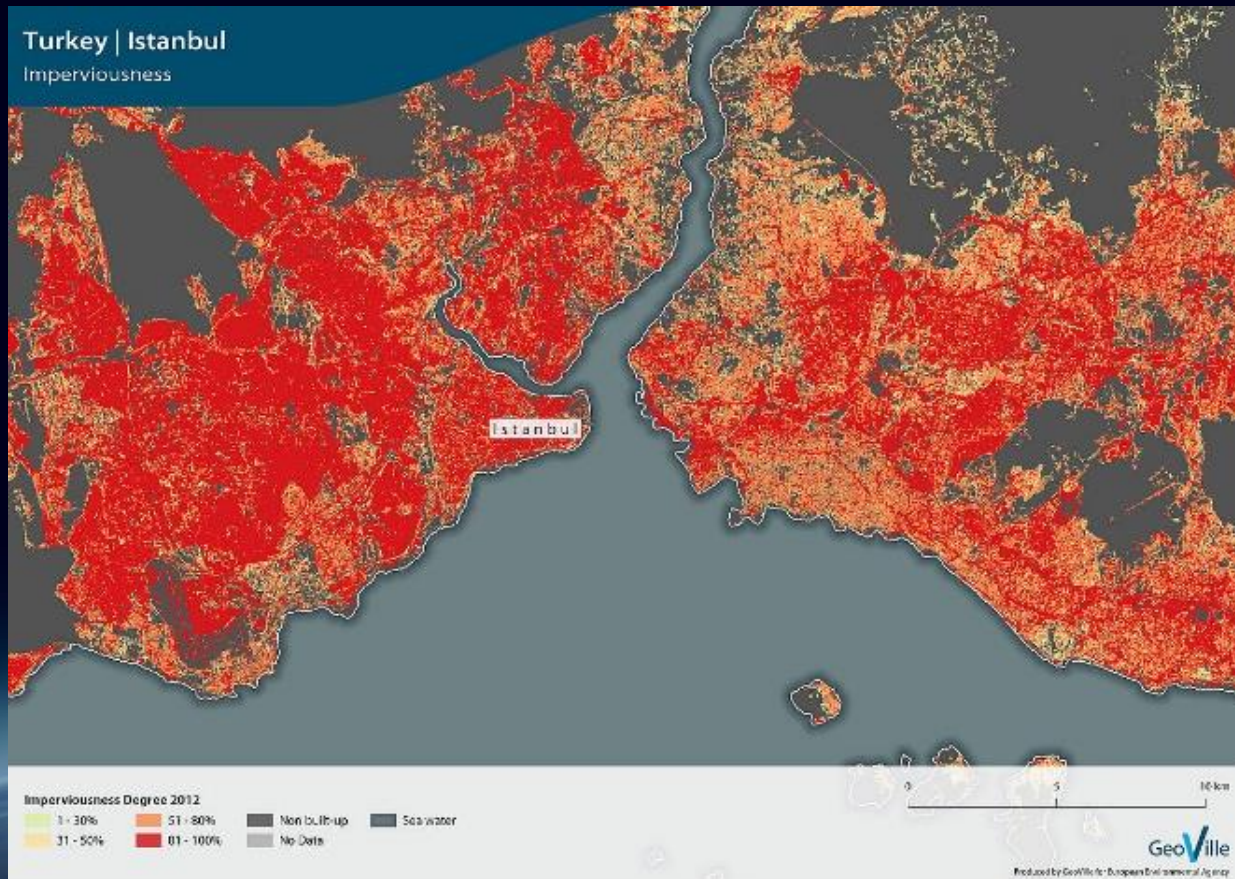




WORLD  
METEOROLOGICAL  
ORGANIZATION

Weather · Climate · Water

Support to services for forecasts, warnings, climate scenarios etc.



GeoVille  
Land Cover mapping

Corine Land Cover Mapping: GeoVille High Resolution Imperviousness

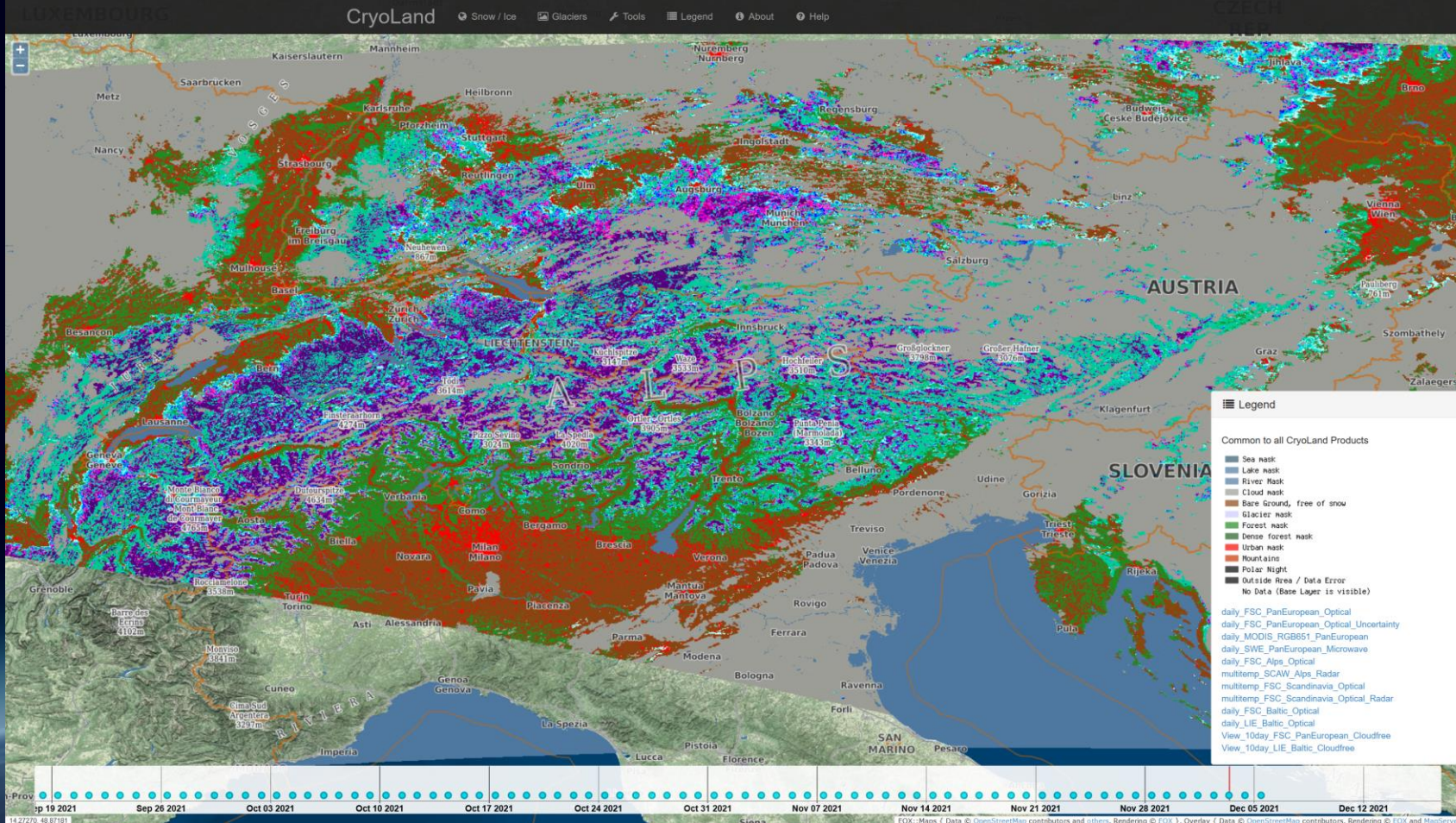




WORLD  
METEOROLOGICAL  
ORGANIZATION

Weather · Climate · Water

Support to services for forecasts, warnings, climate scenarios etc.



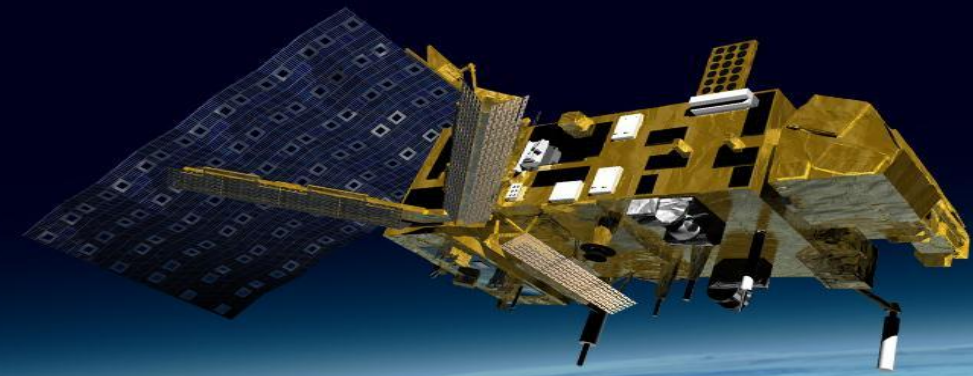
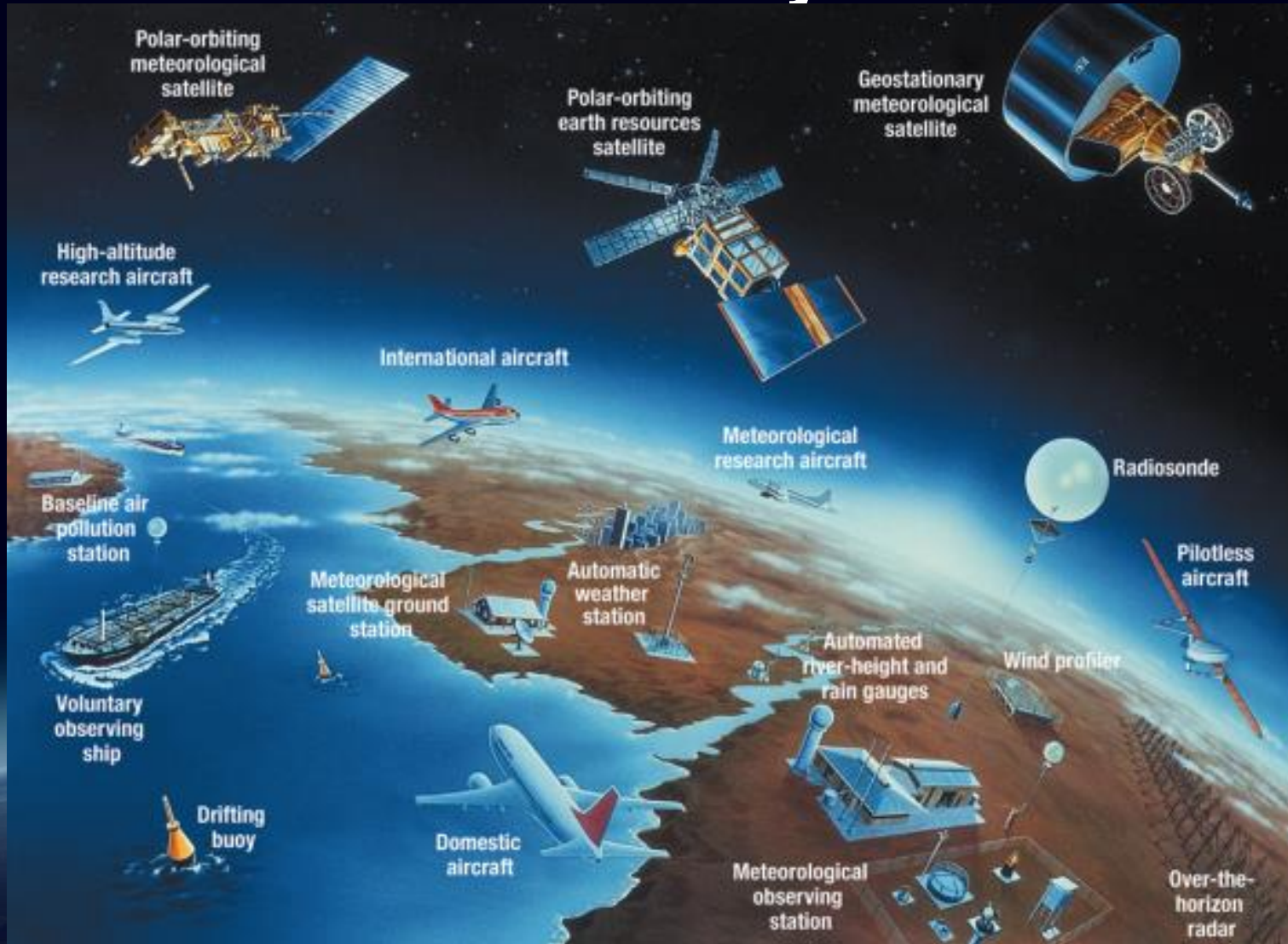
Enveo  
Cryoland

Enveo Cry Portal: daily snow cover





# How about other systems?

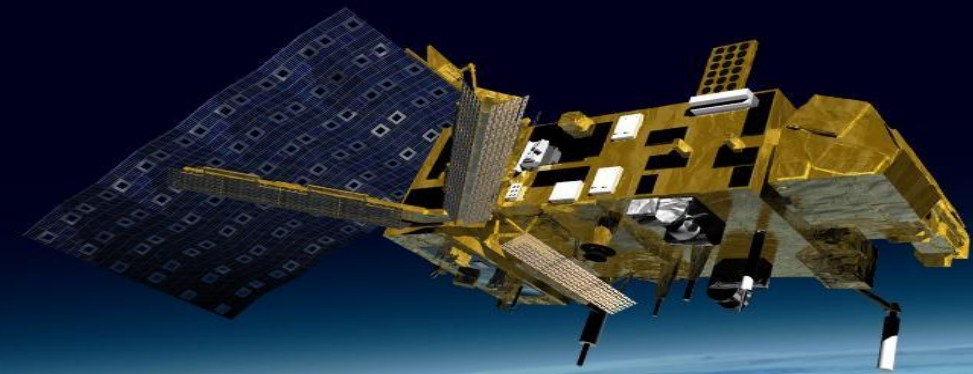
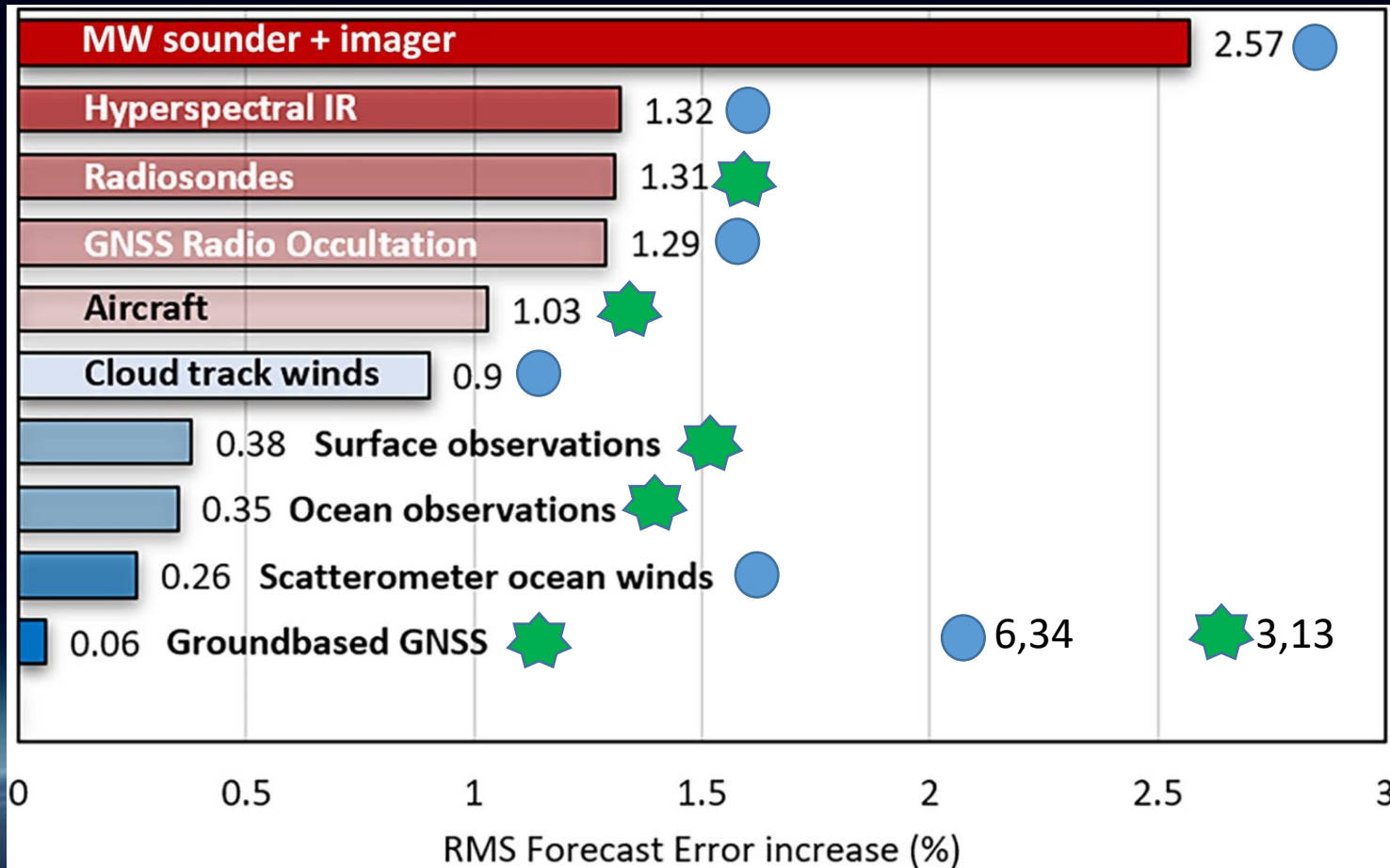


- Complementarity
- Calibration





# How about other systems?



- Complementarity
- Calibration



# Linking Obs systems – data policies – financing

## WMO Unified Data Policy

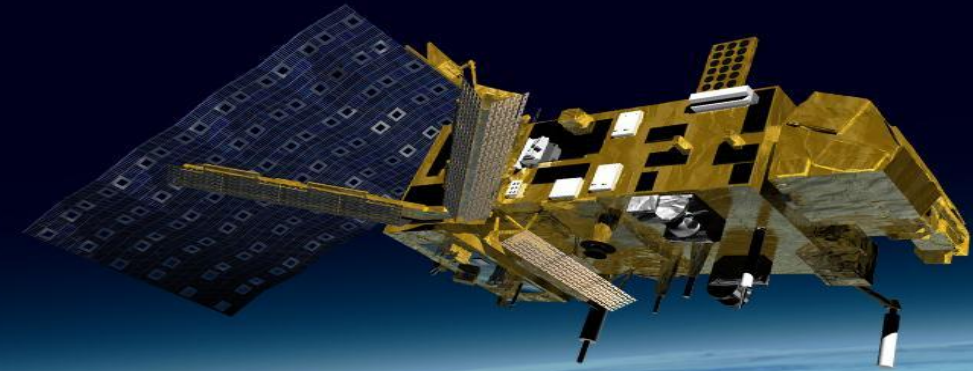
- Increased exchange of observations by all Members
- Return of high-quality model output to all Members

## Global Basic Observing Network

- Regulatory implementation of data policy
- Increased exchange of observations, **facilitated by both Data Policy and SOFF**

## Systematic Observations Financing Facility

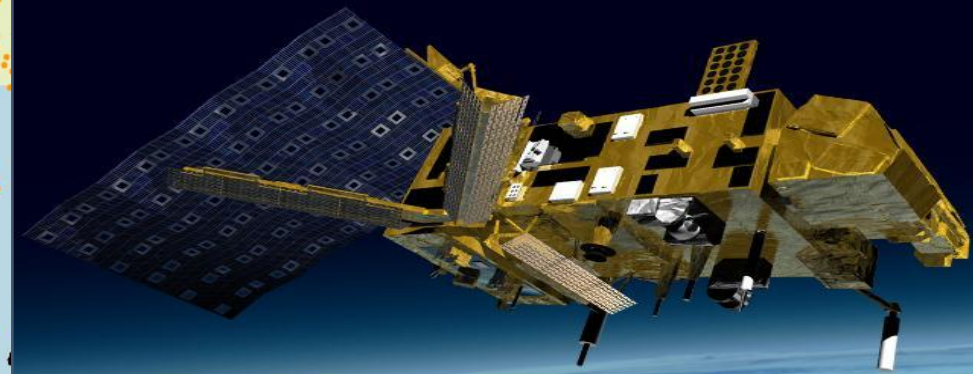
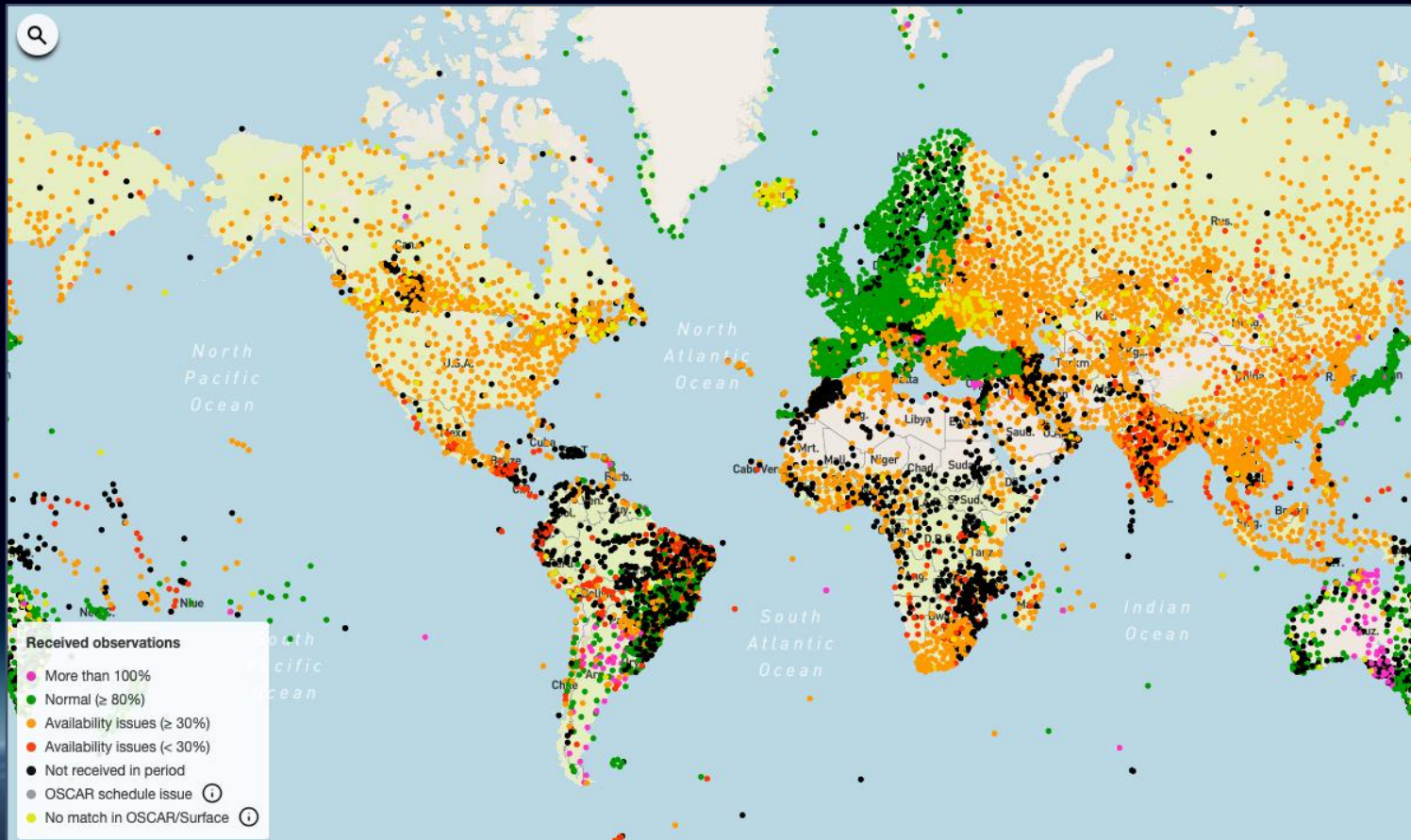
- Technical and financial support for **GBON** implementation where it is most needed
- Building on **GBON** regulations







# Linking Obs systems – data policies – financing



Green:  
In time & correct



WORLD  
METEOROLOGICAL  
ORGANIZATION

Weather · Climate · Water

# SOFF initiators

## ALLIANCE FOR HYDROMET DEVELOPMENT MEMBERS

ADAPTATION FUND

AFRICAN DEVELOPMENT BANK

ASIAN DEVELOPMENT BANK

CLIMATE INVESTMENT FUNDS

EUROPEAN BANK FOR RECONSTRUCTION  
AND DEVELOPMENT

GLOBAL ENVIRONMENT FACILITY

GREEN CLIMATE FUND

ISLAMIC DEVELOPMENT BANK

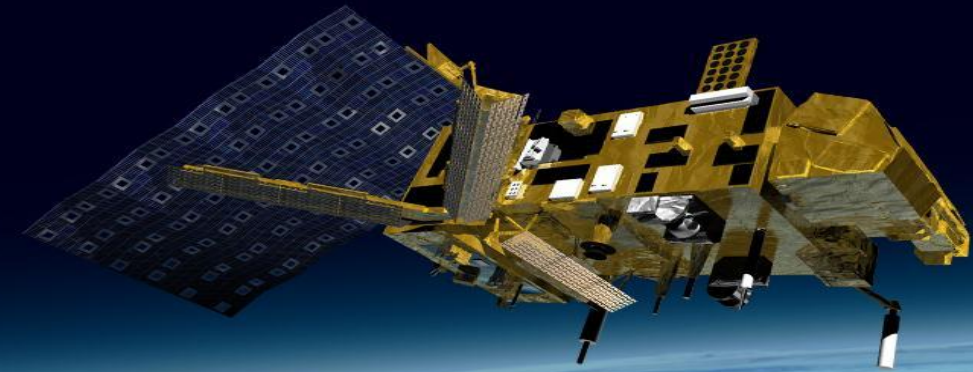
UNITED NATIONS DEVELOPMENT PROGRAMME

UNITED NATIONS ENVIRONMENT  
PROGRAMME

WORLD BANK

WORLD FOOD PROGRAMME

WORLD METEOROLOGICAL ORGANIZATION







# SOFF roadmap

## Readiness

Country Hydromet Diagnostics to assess country hydromet status

Define national GBON gap

Develop plan to close the GBON gap

## Investment

Close the GBON gap

Make GBON capital investments

Strengthen GBON human and institutional capacity

## Compliance

Support sustained GBON compliance

Contribute to operation and maintenance costs via results-based finance

Enable access to improved weather and climate products

On-demand technical assistance and knowledge support

## SOFF Targets

68



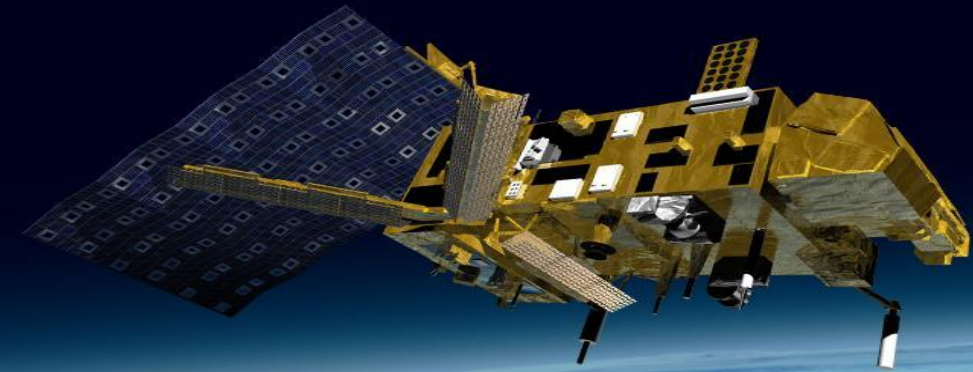
SIDS and LDCs supported to become GBON compliant and accessing improved weather and climate products

5

Year initial implementation period

\$ 400

Million mobilized





# Summary: What do countries and Met services need?

- Sustainable access to Earth System data
- Sustainable financing of Obs systems
- Incentives for investments (PPE)
- Well designed public good approach

