

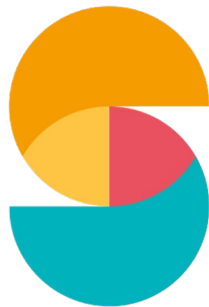
Keeping an eye on Surface Water. *From Space.*

Andreas Salentinig | *ubicube geospatial solutions*



ubicube

2 0 2 1



**WORLD
SPACE
FORUM**

Session Four

Examples and Successful Initiatives

How everything began...

24.11. - 1.12.2020

SPACE4MOBILITY HACKATHON

Corporate Challenges:

- Greenspace maintainance
- Flight safety
- Track network quality assurance
- Monitoring of flooded areas



Apply now until 7th November!

Set the cornerstone for a collaboration with one of our corporate partners.

Bundesministerium
Klimaschutz, Umwelt,
Energie, Mobilität,
Innovation und Technologie



austro
CONTROL

AISIFI | N | AIG

OBB
INFRA

viadonau



How everything began...

24.11. - 1.12.2020

SPACE4MOBILITY HACKATHON

Corporate Challenges:

- Greenspace maintainance
- Flight safety
- Track network quality assurance
- **Monitoring of flooded areas**

Apply now until 7th November!
Set the cornerstone for a collaboration with one of our corporate partners.

Bundesministerium
Klimaschutz, Umwelt,
Energie, Mobilität,
Innovation und Technologie

austro
CONTROL

AISIFI | N | AG

ÖBB
INFRA

viadonau

15 LIFE ON LAND



Biodiversity research



15 LIFE ON LAND



Biodiversity research



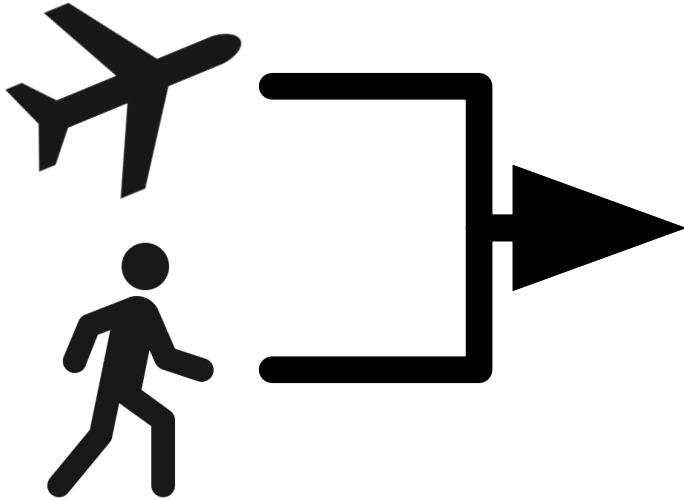
13 CLIMATE ACTION



Flood compensation payments

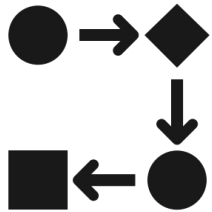


Problem | *Monitoring waterlogged areas*



Problem | *Monitoring waterlogged areas*

Cumbersome



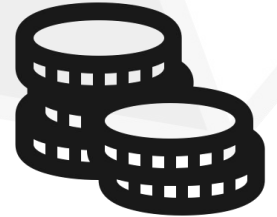
Inaccurate



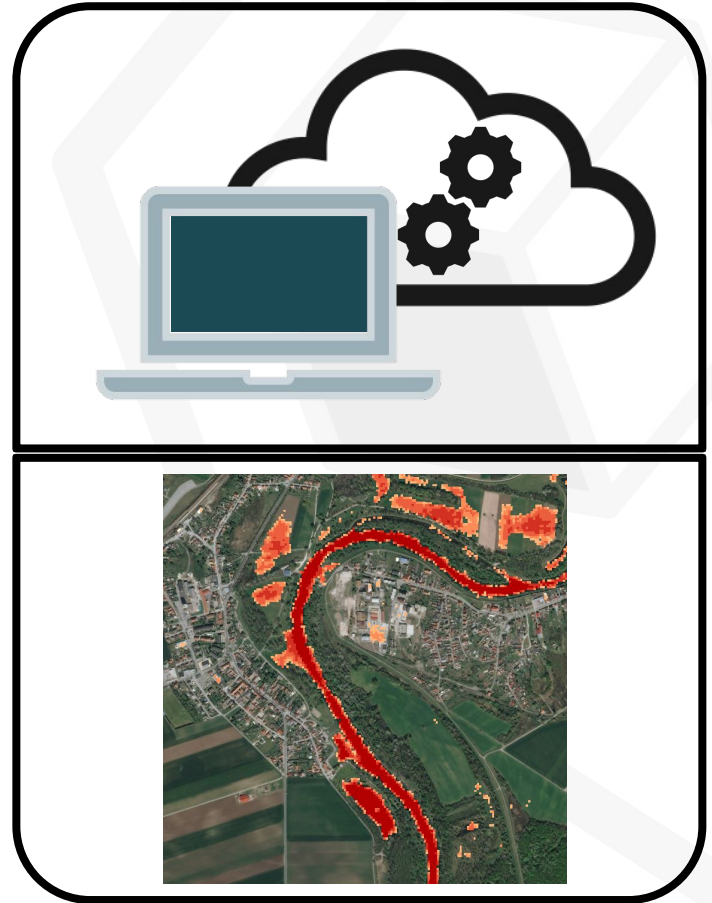
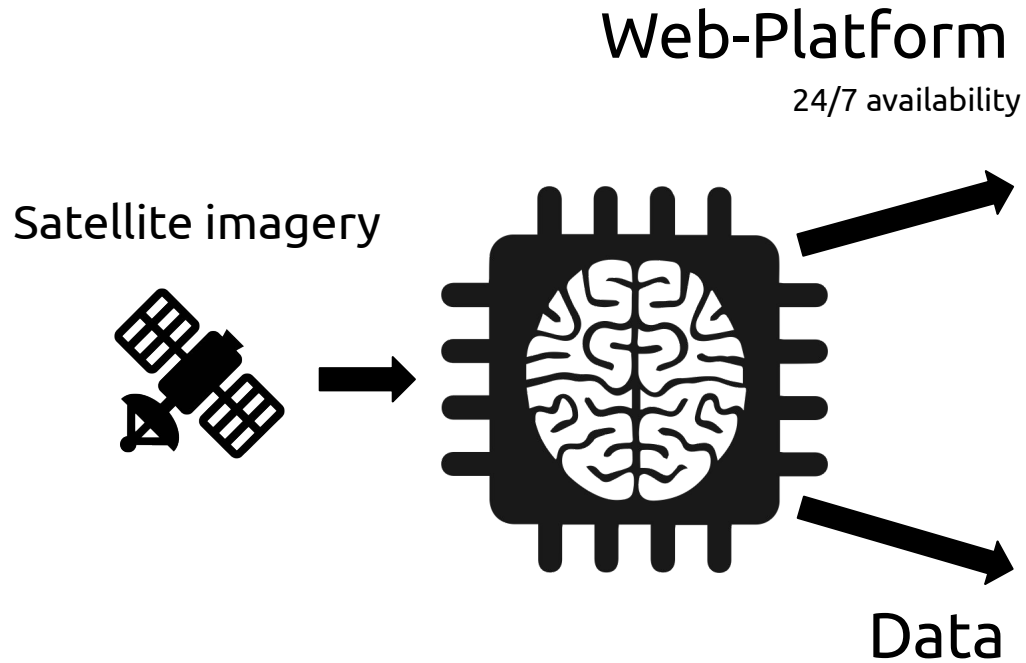
Intransparent



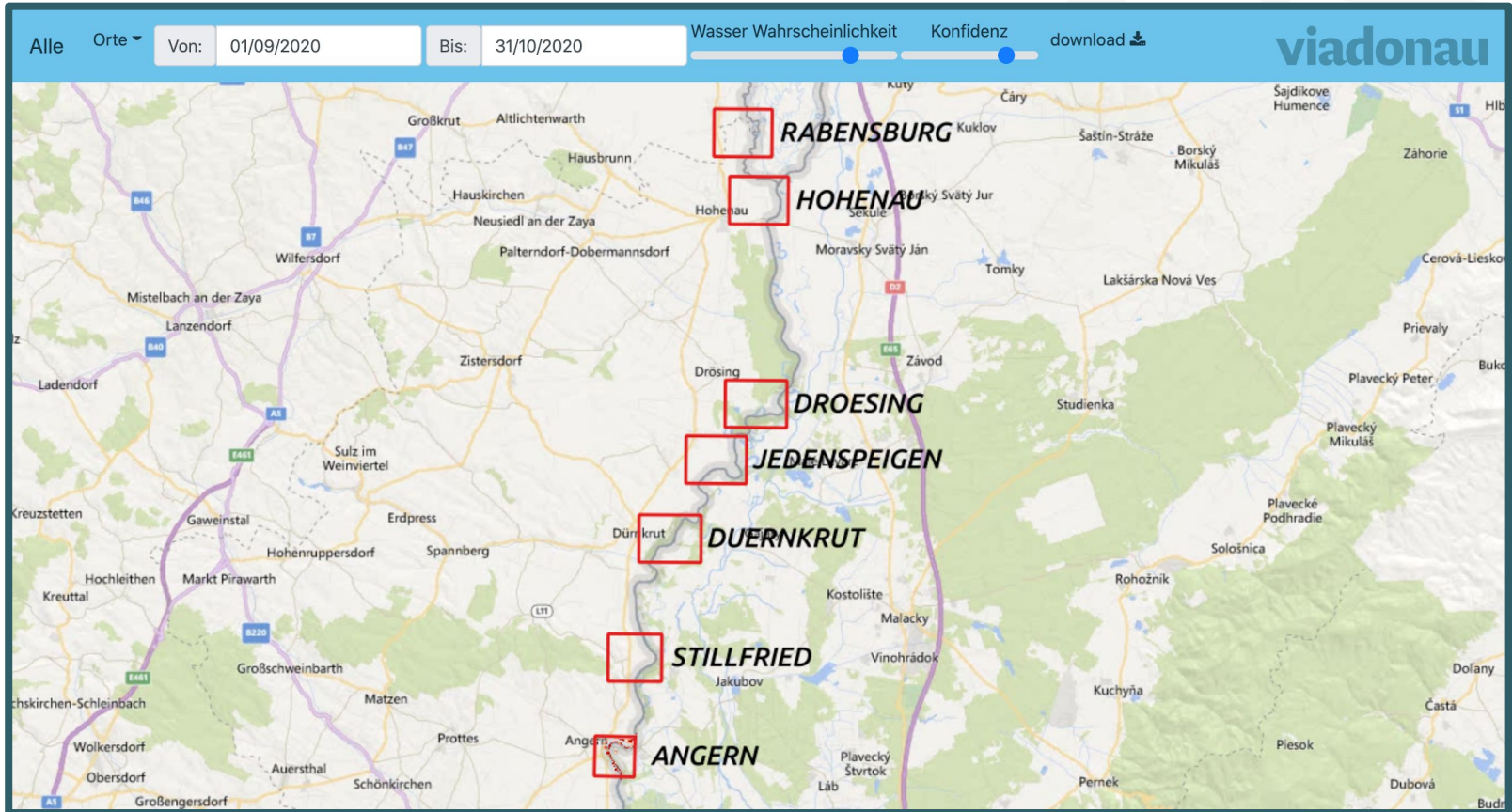
Expensive



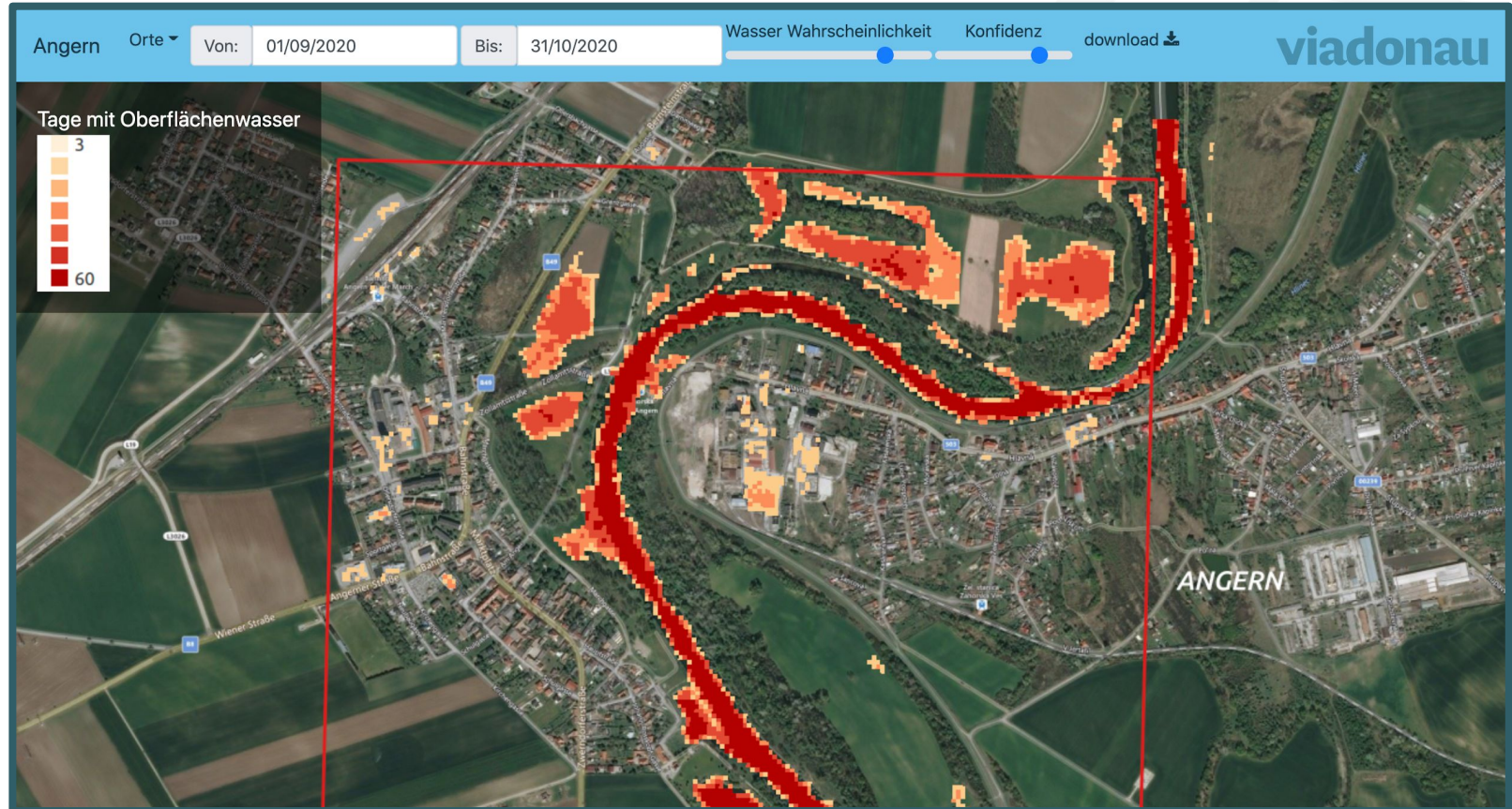
Our solution



Web-Plattform



Web-Plattform



Data download

The screenshot shows a GIS application interface with a map of a river and surrounding area. The map features a blue river and a white shapefile overlay. The interface includes a toolbar at the top, a Layers Panel on the left, and a Value Tool below it. The Layers Panel shows three layers: 'investigation area', 'shapefile', and 'Bing Aerial with labels'. The Value Tool is set to 'Table' mode and shows a table with one row: '1 test_sum out of ext...'. The coordinate display at the bottom shows the coordinates (1871854.376929, 6168700.531837).

Coordinate: (1871854.376929, 6168700.531837)

Layer	Value
1 test_sum	out of ext...

Coordinate: 1871854,6168701 Scale: 1:15.425 Magnifier: 100% Rotation: 0,0 Render EPSG:3857 (OTF)

Why ubicube ?

✓ cost-efficient

✓ easy to use

✓ tailored solution



Surface Water Monitoring System | *Status*

- System ***operational*** since October 1st, 2021
- 4 year contract with first ***early adopter*** customer
- Consistent improvement (algorithms, user interface)
 - Early adopter ***feedback***
 - Additional ***data***

Surface Water Monitoring System | *Current challenges*

- Technical
 - ***data gaps***, missing reference data
- Find ***additional use cases/users*** for the water monitoring service
 - Flood compensation payments
 - Research
 - Agriculture (waterlogged areas analysis)
 - ESG ratings
 - ...
- ***Get in touch*** with potential users

www.ubicube.eu

office@ubicube.eu



ubicube