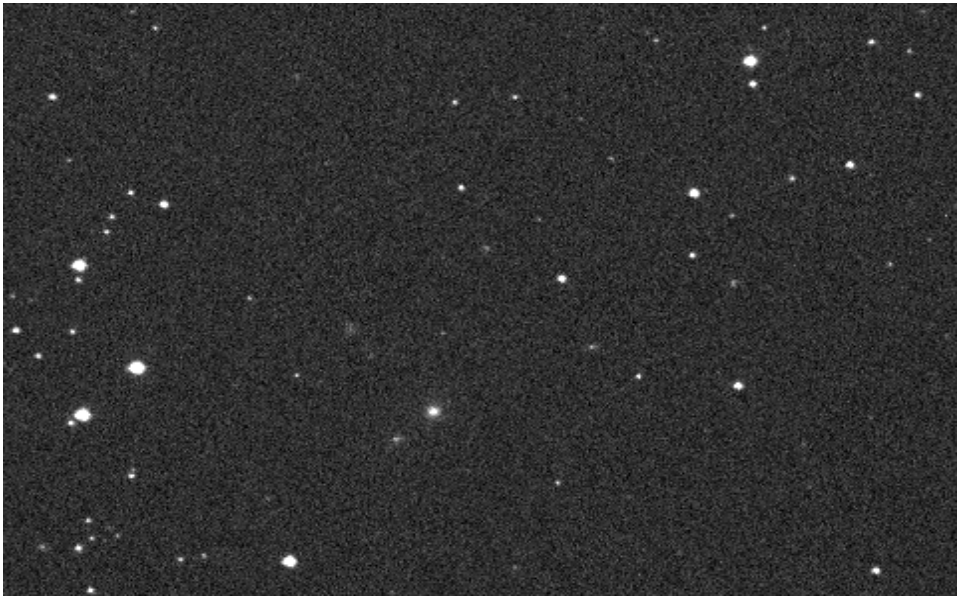


The background of the slide is a dark space filled with stars. On the left, a large, detailed Earth is shown, displaying blue oceans, white clouds, and brown and green landmasses. On the right, a large, dark, irregularly shaped asteroid with a prominent crater is shown in the foreground. In the distance, to the right of the large asteroid, a smaller, spherical asteroid is visible. The overall scene is set against a black background with scattered white stars.

## **IAWN-related activities in Europe**

**Detlef Koschny,  
IAWN steering group member  
NEO segment co-manager, ESA**

**[Detlef.Koschny@esa.int](mailto:Detlef.Koschny@esa.int)**

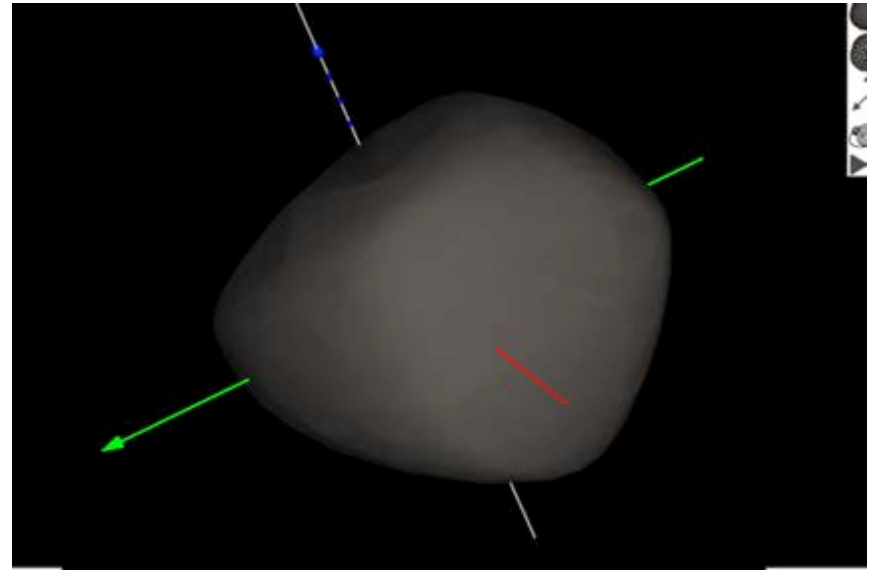
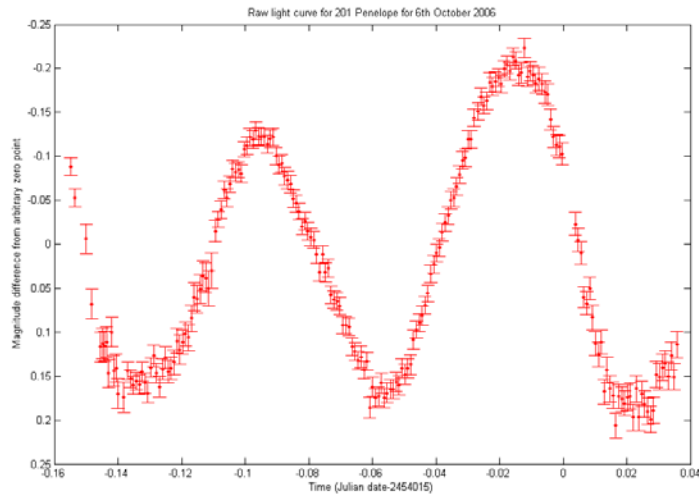


(Image: Apitsch, <http://www.astro-wildberg.de/anf-d.htm>)



Image: Cibin/CGS





NEOShield-2 NEWS & EVENTS FAQ & GLOSSARY THE NEOSHIELD-2 PROJECT NEAR EARTH OBJECTS MITIGATION MEASURES

NEOShield-2

SCIENCE AND TECHNOLOGY FOR NEAR-EARTH OBJECT IMPACT PREVENTION

Accessing technologies and physical characterisation for hazardous Near-Earth Objects (NEOs), preparing their deflection and expanding our knowledge of the science behind them

NEOShield-2 is an EU/HORIZON 2020 Project

Click here

Website

# Orbit predictions



## NEODyS-2

Near Earth Objects - Dynamic Site



Go to NEA ▶

Home

Objects

Observatories

Search

Risk page

NEA elements

Related sites

Info & Credits

### RISK PAGE ▶ RISK LIST

[Help]

Intro

Risk list

Past impactors

References

Notes

Last updated: 2016-02-12 09:53:29 UTC

There are currently **520 NEAs** in the NEODyS risk list. Please, use the links above the table to display all or part of the list. The list can be sorted by clicking on the table headers.

[All] [Special](#) | [Observable](#) | [Possible recovery](#) | [Lost](#) | [Small](#)]

Designation	H	PS <sub>max</sub>	TS <sub>max</sub>	▼ Status	Camp. start	Camp. end	Notes
<a href="#">(29075) 1950DA</a>	17.1	-1.36	n/a	Special			
<a href="#">(99942) Apophis</a>	18.9	-3.67	0	Special			
<a href="#">(101955) Bennu</a>	20.6	-2.32	n/a	Special			
<a href="#">(410777) 2009FD</a>	22.1	-1.83	n/a	Special			
<a href="#">2015RN35</a>	23.0	-5.12	0	Observable			

Screenshot of NEODyS, the European system to predict possible impacts





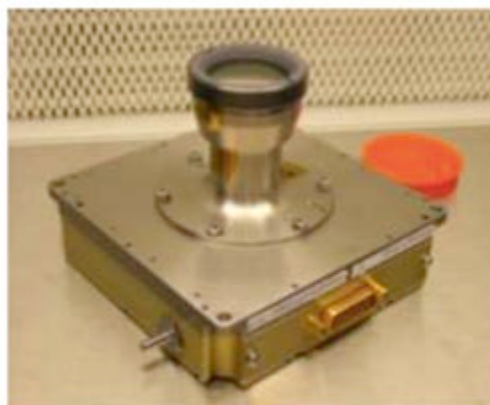
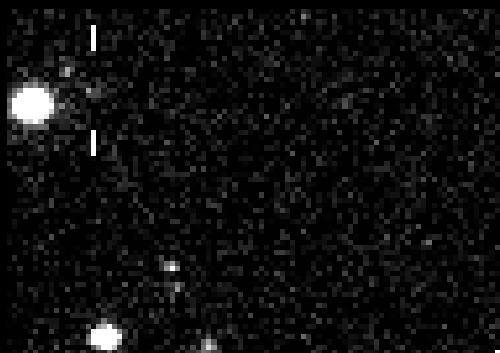
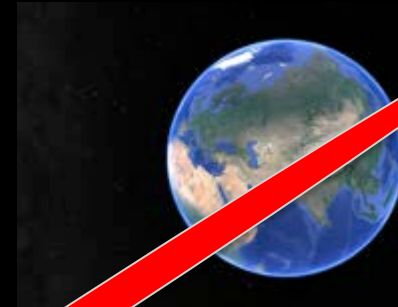


Figure 5-3: Terma HE-5AS STR Camera Head Unit



# Interface to emergency response



ESA UNCLASSIFIED - For Official Use



Near-Earth Object Information Plan - Distribution of information for a credible asteroid impact threat

Orbit uncertainty as seen from the asteroid



Image credit: ESA