

UAT Beacon Radio (UBR-TVR) Technical Specifications

Physical Specifications:

Width: 2.5"
Length: 4.5"
Height: 1.5"
Weight: 9.6oz
Temperature: -20C to 40C

External Connectivity

Compact Data Connector
- RS-232
- RS-422
- USB
- 1 pulse/sec
- Transmit Suppression

Antennas

UAT Dipole Antenna
Supports external Antenna
VSWR 1.1:2
GPS Patch Active Antenna
Port outputs 3.3V

Power Specifications:

Li Ion Battery (rechargeable): 6.8 Wh
Approx. 5 hours of TX/RX (20 deg C)
External Power: 9-40V input

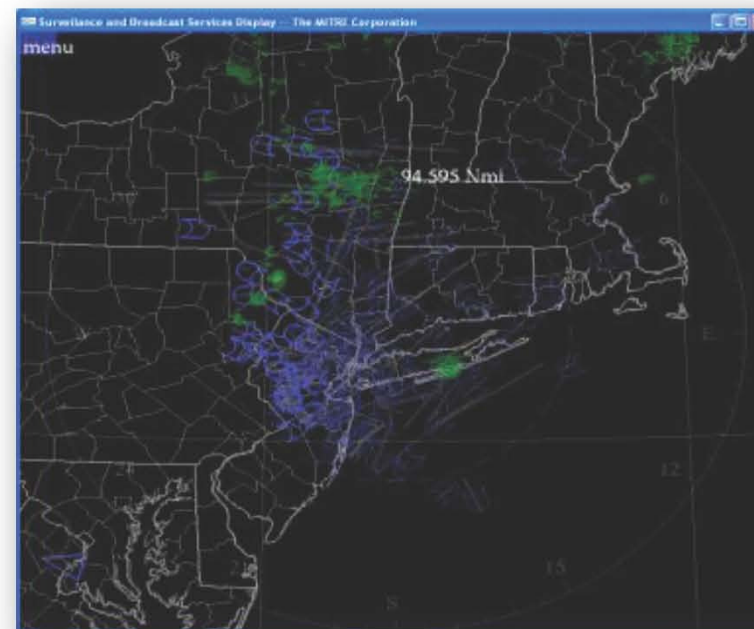


GPS Receiver

Frequency: 1575.42 MHz
Update rate: 1 Hz
PPS: +/- 1 us
TTFF (Cold) : 40s typ.

Spectrum

Frequency: 978 MHz
Bandwidth: 1.04167 Msymbols/sec
Modulation: CPFSK
Power: 38.5 dBm



UBR-TVR Situational Awareness Display



Patent Pending

- Model 20
-
- The Model 20's small package features a built in antenna, allowing easy installation and removal. Using the same 1/4"-20 mounting screw as a camera allows simple attachment to a standard camera mount. The small size also permits installation on or just under the instrument panel cover.
- Current: 150 mA @ 12V
- Size: 4.7" x 2.7" x 2.0"
- 120mm x 68mm x 51mm
- Weight: 13 oz. (.36 kg)
-
-
- Model 25
-
- For more difficult installations the Model 25 features a standard BNC connector, rather than a built-in antenna. This allows any standard GPS antenna to be located remotely and connected to the Recorder via a coaxial cable.
-
- Current: 150 mA @ 12V
- Size: 4.7" x 2.7" x 2.0"
- 120mm x 68mm x 51mm
- Weight: 13 oz. (.36 kg)
- Custom Navigation Display
 - bullet Fast and simple navigation point selection.
 - bullet Instant bearing and distance display for up to 250 points.
 - bullet Instant toggle between a turnpoint and a landing field.
 - bullet Navigation points listed by full 12 character names.
 - bullet Warnings for restricted airspace.
- Size: 2.6" (66 mm) height and width,
- 0.47" (12mm) in front of instrument panel, 0.80" (20 mm) behind instrument panel, fits standard 57 mm panel opening,
- Weight: 0.35 lbs (0.15 Kg)
-
- Wind Strength and Direction:
 - bullet Computed from position drift during circling flight