



**WATER**

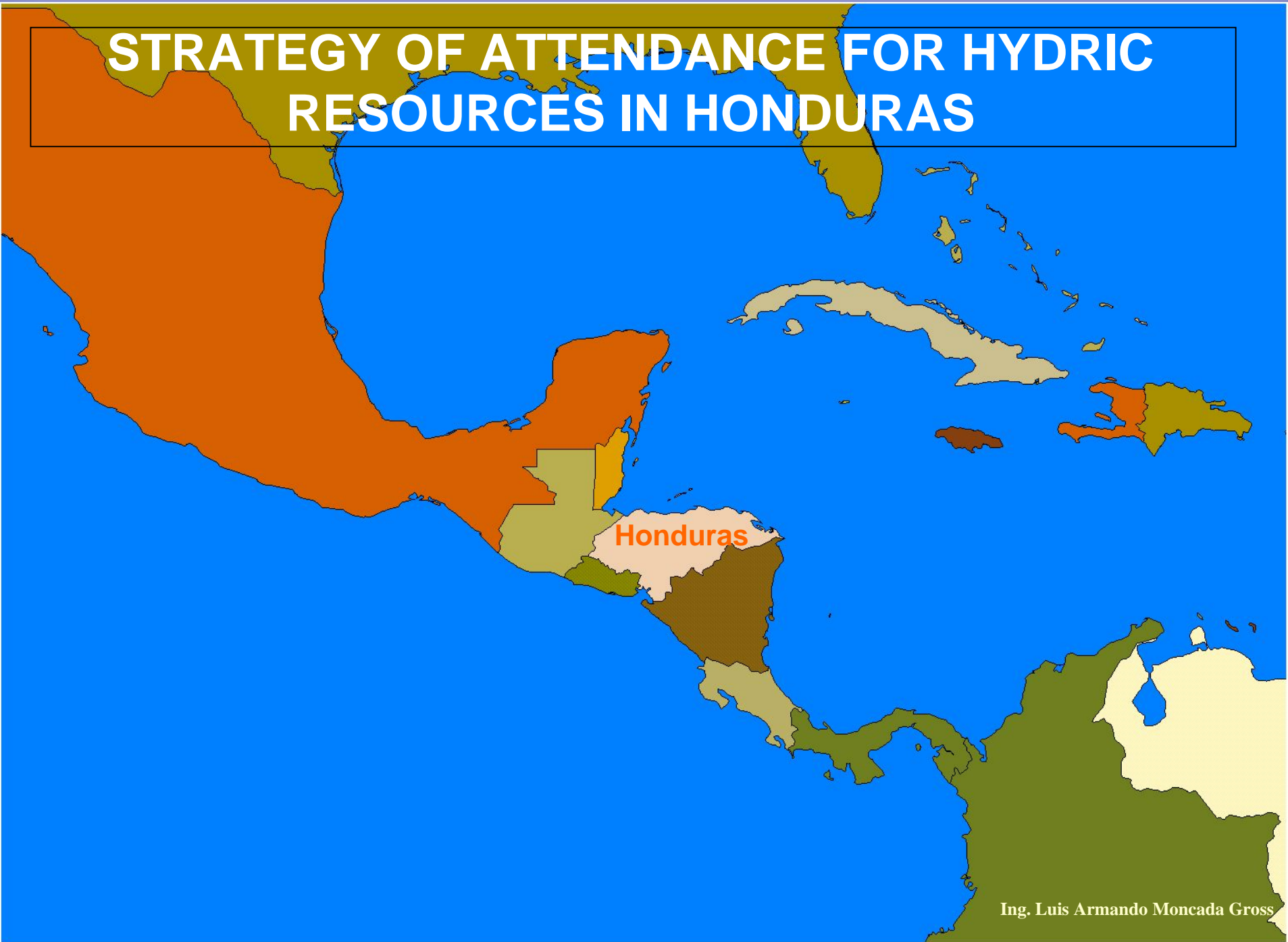
**IN**

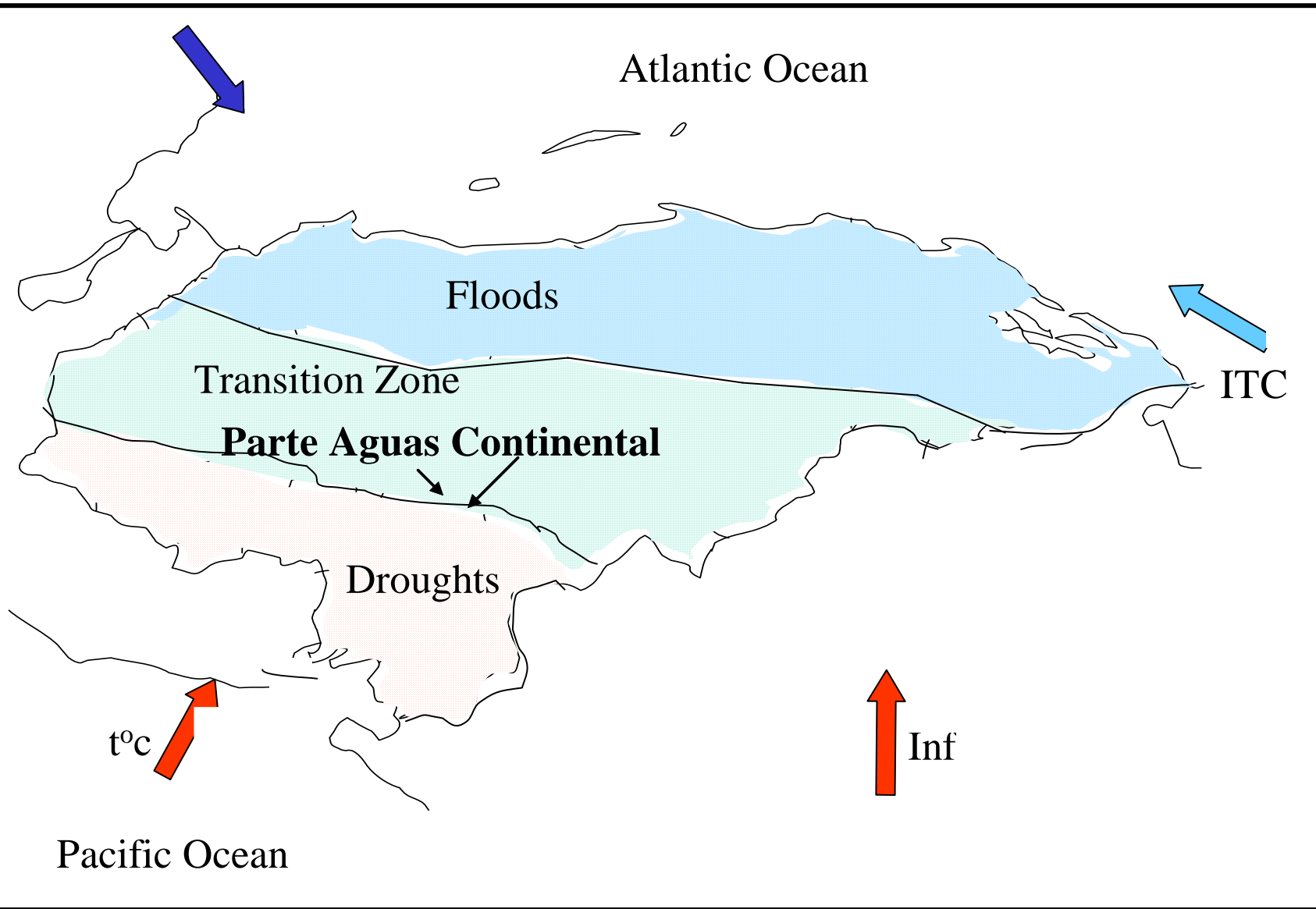
**CENTRAL AMERICA**

**Graz, Austria 2005**

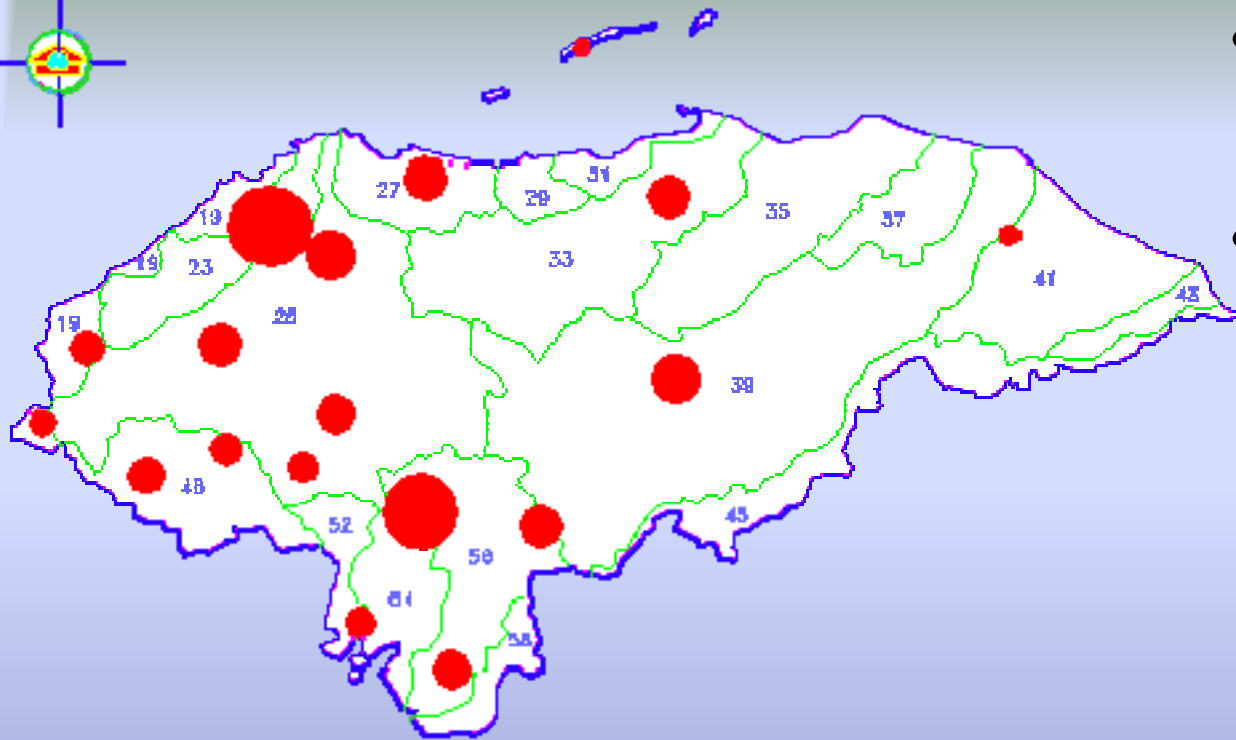
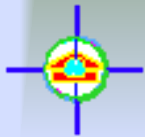
Oscar Cosenza  
Honduras

# STRATEGY OF ATTENDANCE FOR HYDRIC RESOURCES IN HONDURAS



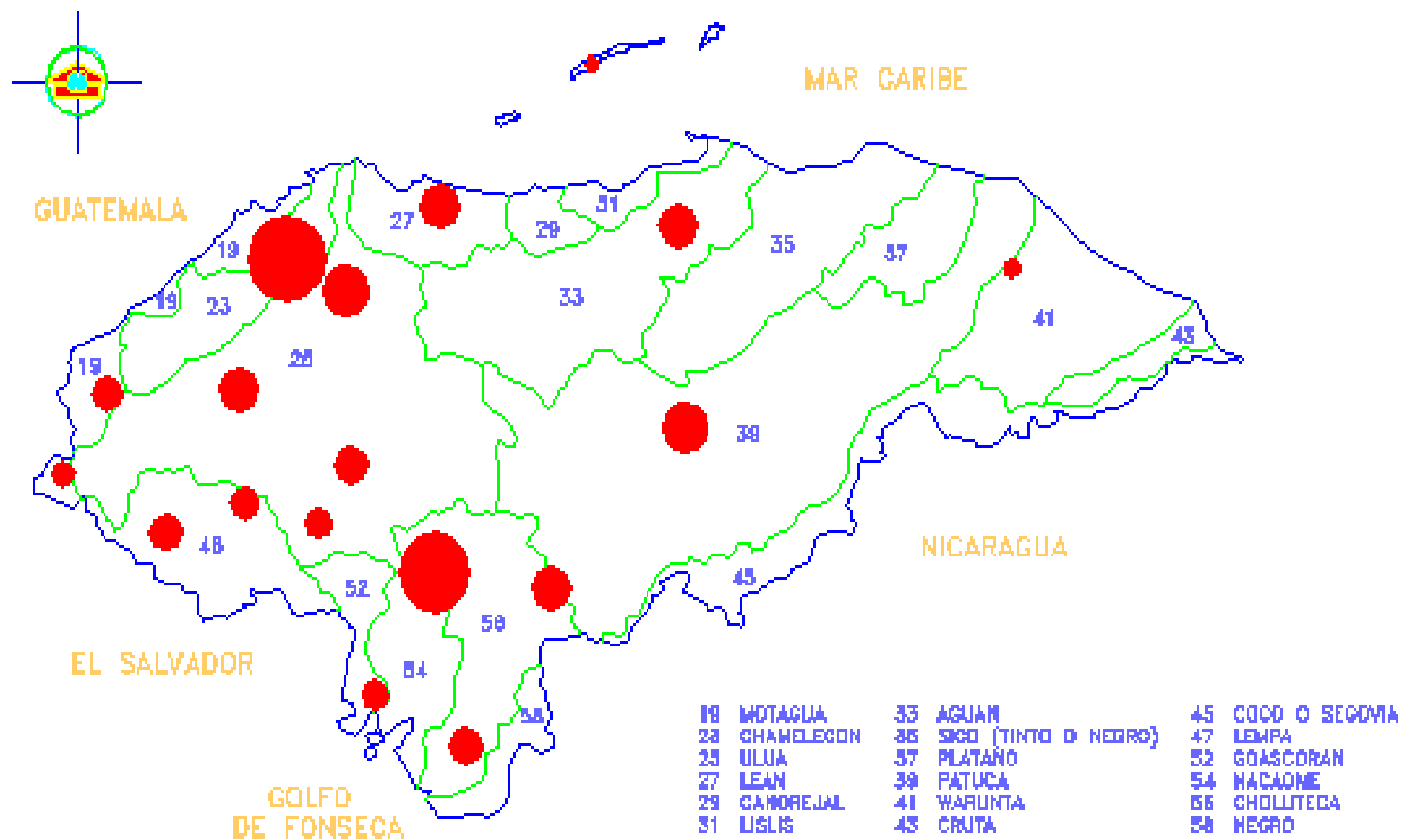


# SITUATION OF THE HYDRIC RESOURCE



- Atlantic, Abundant slope (87%)
- Peaceful slope with Low Volume, only 13% of the resource for 32% of the population of the country

# Urban Population for Basins



# HYDRIC AND DINAMIC BEHAVIOR



**Tela**

**La Ceiba**



**Humuya**



**Bosque latifoliado**



Fuente: Zamorano



**Río Coray**



**San Lucas**



**Río Choluteca**

# General Information

- Surface 112,492 km<sup>2</sup>
- Population 7,174,000 hab.
- Annual precipitation 1880 mm
- Hydrologic capital per capita 14,777 m<sup>3</sup>/hab./year
- 19 Hydrographical basins 1542 m<sup>3</sup>/seg.
- Urban covertures of water for human consumption 80%
- Rural covering of Water for Human Consumption 67%

Sanitation 68%

Agricultural surface 1,683,276 Has

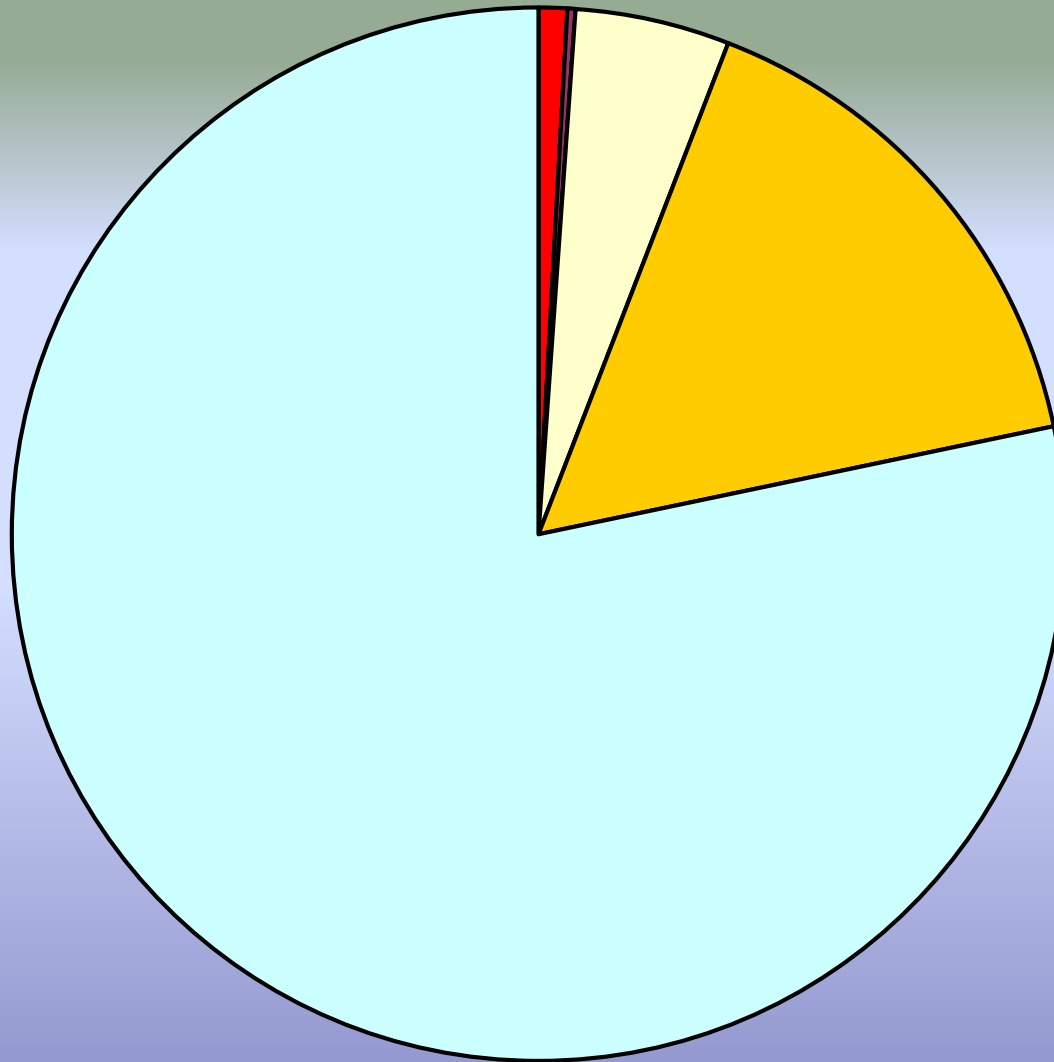
Surface under Watering 47,263 Has

Agricultural Gross internal product \$ 933.2 millions



Pulhapanzak

# HYDRIC POTENTIAL



- Consumo Doméstico (0.75%)
- Consumo Industrial (0.25%)
- Riego (4.86%)
- Generacion Eléctrica (15.69%)
- SIN UTILIZAR (78.45%)





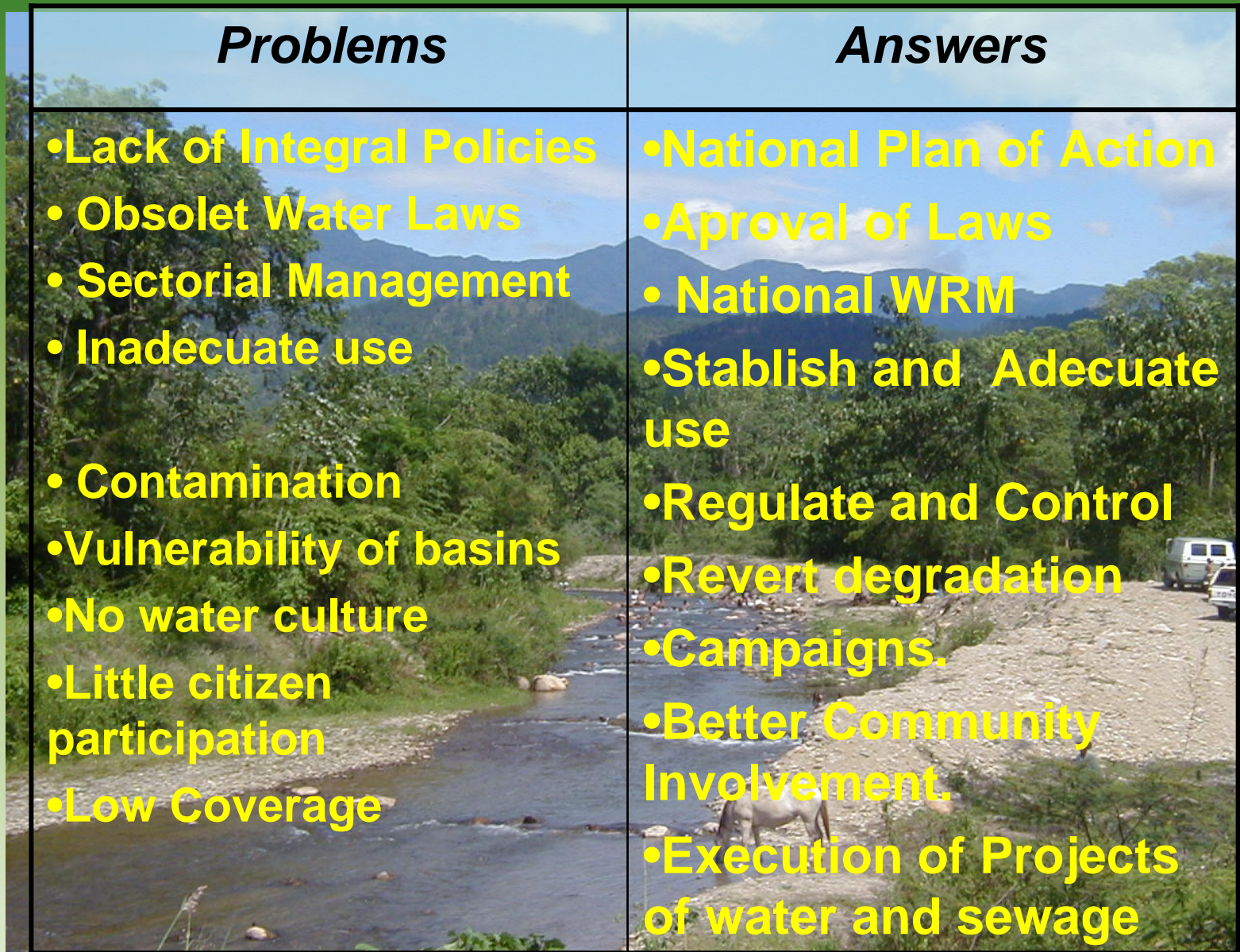
• *Low Coverage of water and sanitation*

• *High Immigration to main cities*

• *Lack of water infrastructure*

# *Then What do we do?*

<b>Problems</b>	<b>Answers</b>
<ul style="list-style-type: none"><li>•Lack of Integral Policies</li><li>• Obsolete Water Laws</li><li>• Sectorial Management</li><li>• Inadecuate use</li><li>• Contamination</li><li>•Vulnerability of basins</li><li>•No water culture</li><li>•Little citizen participation</li><li>•Low Coverage</li></ul>	<ul style="list-style-type: none"><li>•National Plan of Action</li><li>•Aproval of Laws</li><li>• National WRM</li><li>•Stablish and Adecuade use</li><li>•Regulate and Control</li><li>•Revert degradation</li><li>•Campaigns.</li><li>•Better Community Involvement.</li><li>•Execution of Projects of water and sewage</li></ul>

The background of the table is a scenic landscape. On the left, a river flows through a lush green valley. In the distance, there are blue mountains under a clear sky. On the right, a dirt road runs parallel to the river, with a white van and a white car parked on it. A person is visible near the vehicles. The overall scene is bright and sunny.

# *Environmental Service Payment*

- Irrigation association of producers:  
Pay for the water service and ES
- Forestry rehabilitation:  
Nurseries with forest plants
- Communities around water

*Thank You  
For Your Time*