

# Environmental Risks and Social Dissimilarities: Facing the Challenges of Global Changes in the Baixada Santista Metropolitan Region (Brazil)




**Andrea Ferraz Young**



# Baixada Santista Metropolitan Region

## Baixada Santista Metropolitan Region (BSRM)


 city division

 metropolitan centre

 Urban areas

 Rivers

 State Road

 Local Road

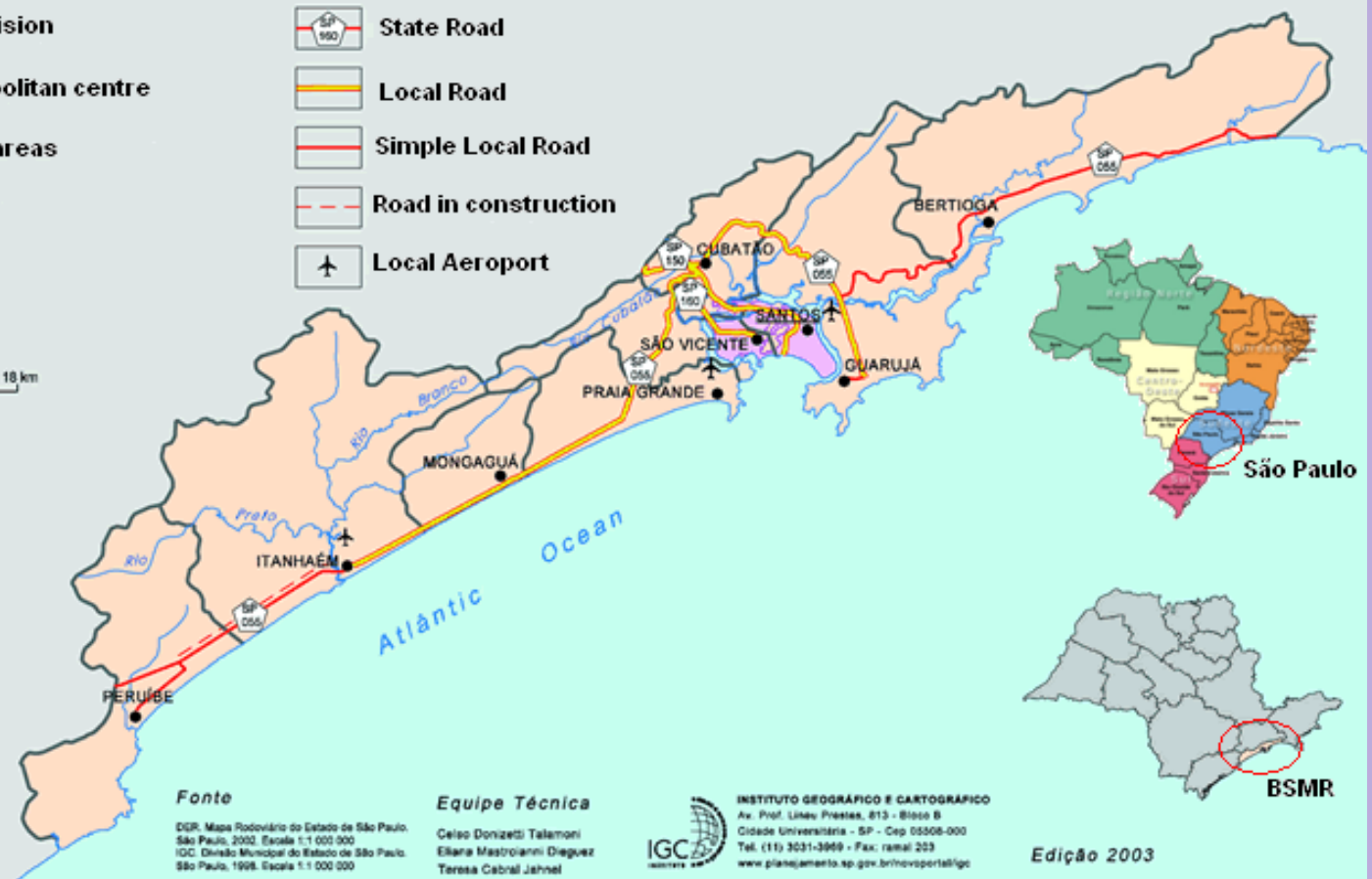
 Simple Local Road

 Road in construction

 Local Airport

Scale

0 9,0 18 km





**Relatório de obras**

- Industrial area
- Historical Centre
- Harbour area
- Beach Point
- South Express Road
- Beach Point (sharp end)
- Historical Centre - Santos
- Residential area - San Vicente
- Viçente de Carvalho
- Viçente de Carvalho neighborhood Guarujá
- Bequibito - Praia Grande
- Padre Manoel de Nóbrega Road

# Industrial area of Cubatão

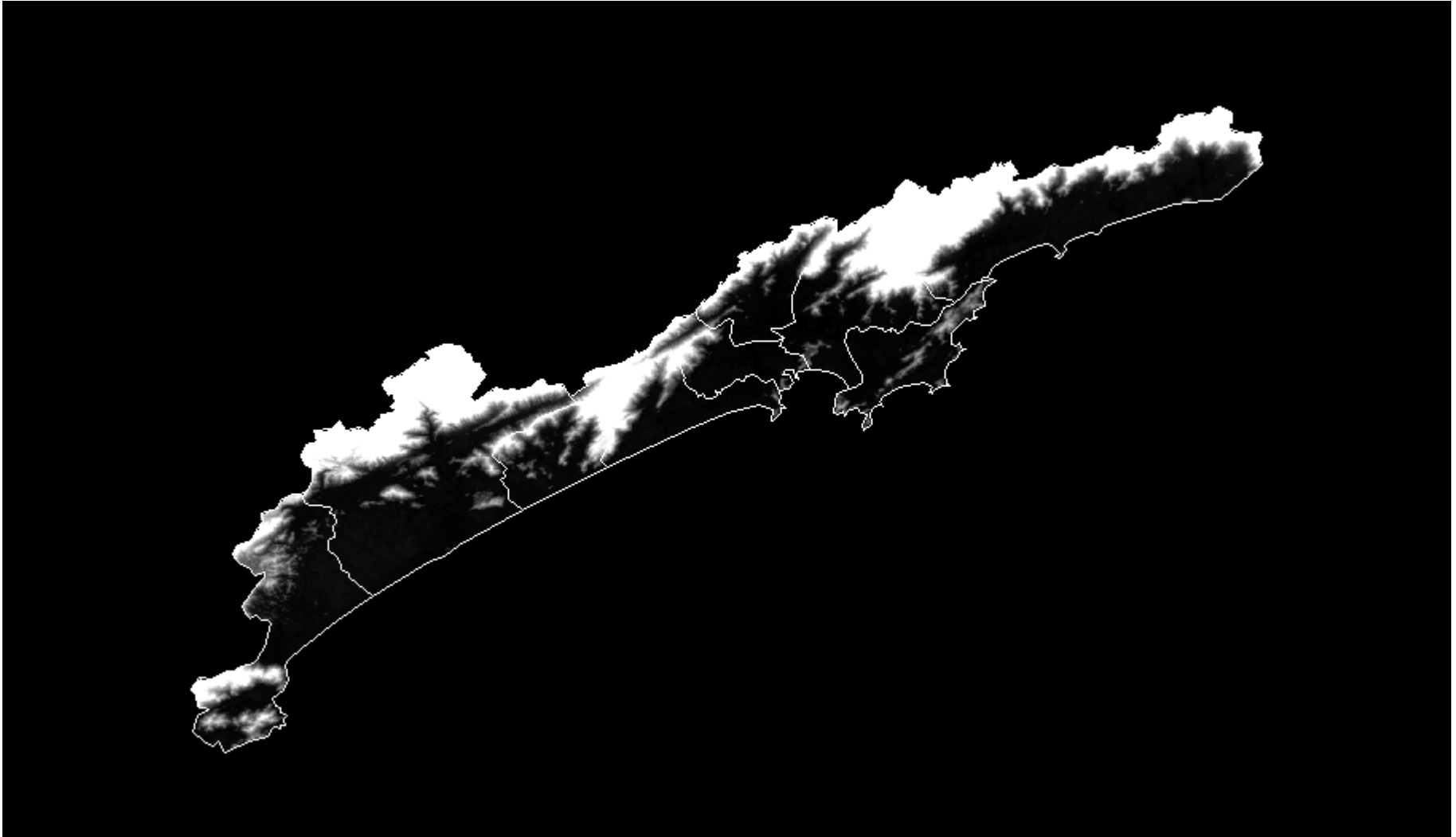


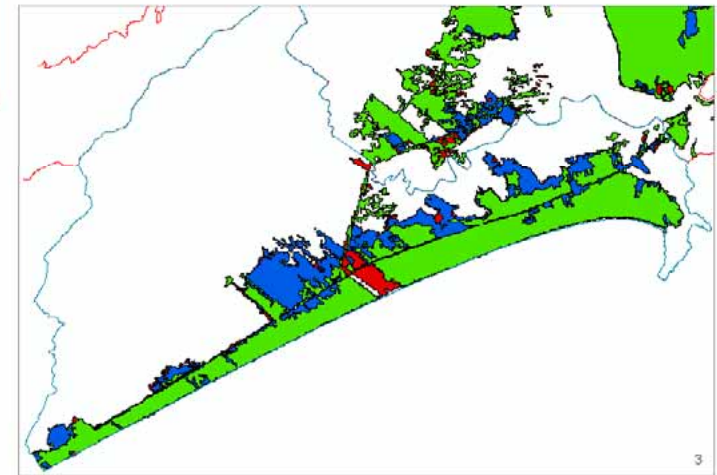
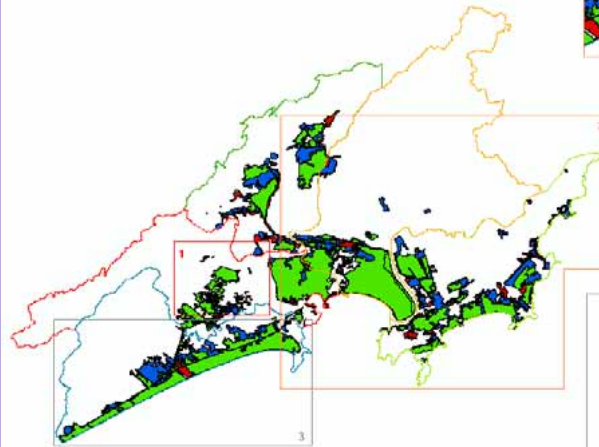
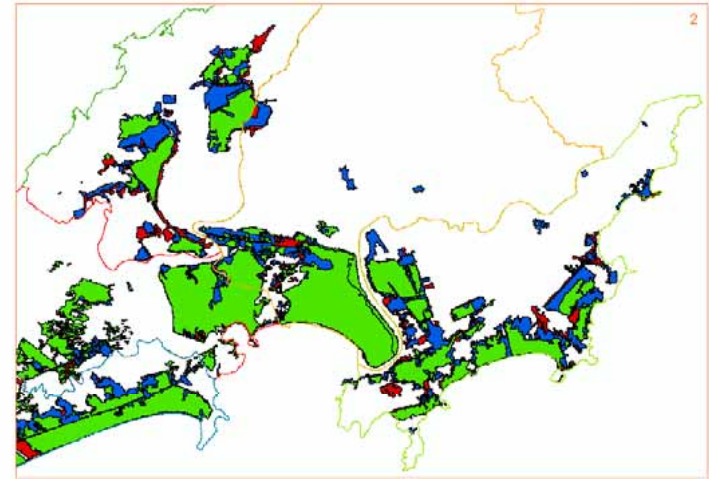
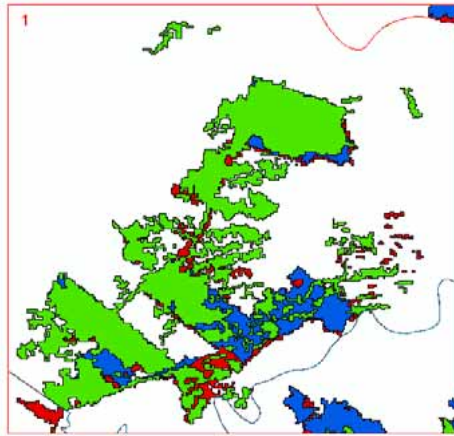
**Significant transformations of the landscape are caused by socioeconomic and political decisions (chemical, fossil fuel, building industry)**

# The use of Landsat Images for spatial analysis (urban areas invade natural areas)



# Topography — Digital Model Terrain





**Historical expansion (serie)**

- 1991
- 2000
- 2005

**Division of cities**

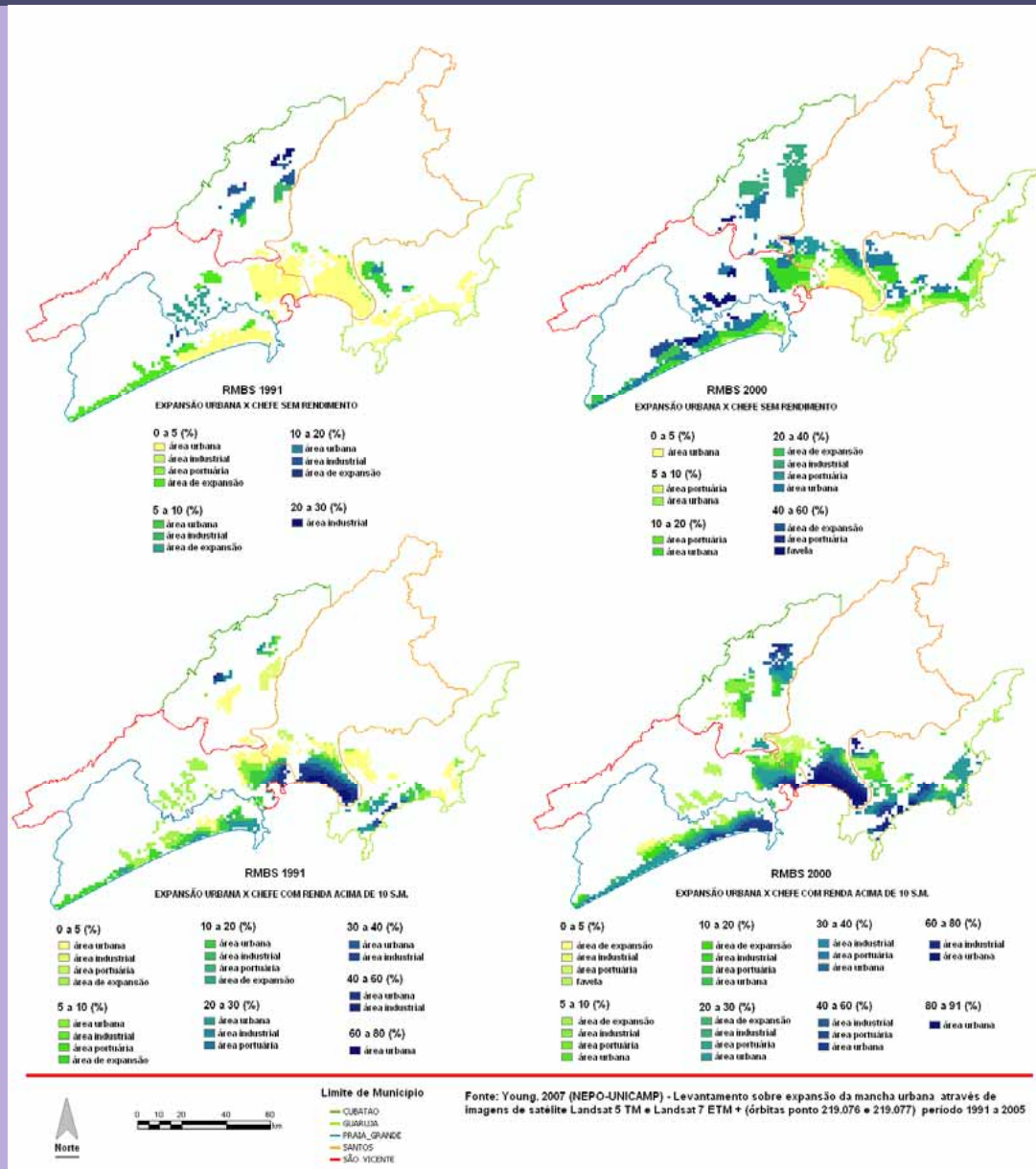
- CUBATAO
- GUARUJA
- PRAIA GRANDE
- SANTOS
- SÃO VICENTE



Fonte: Young, 2007 (NEPO-UNICAMP)

Landsat 5 TM e Landsat 7 ETM + 1991 to 2005

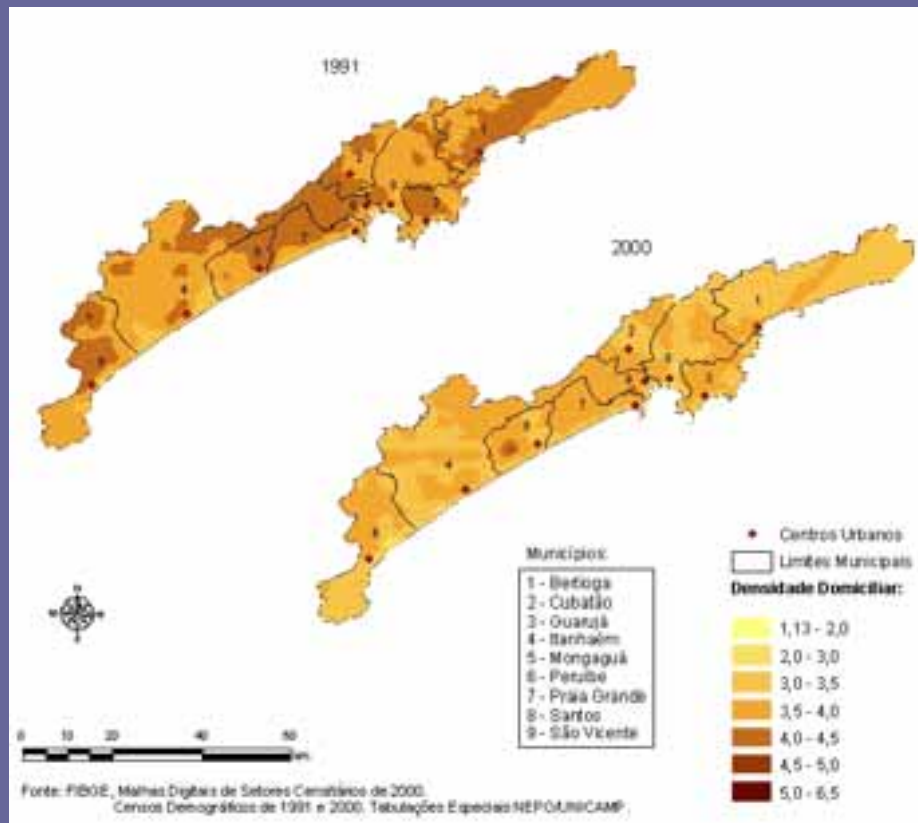
# Income and Urban Expansion





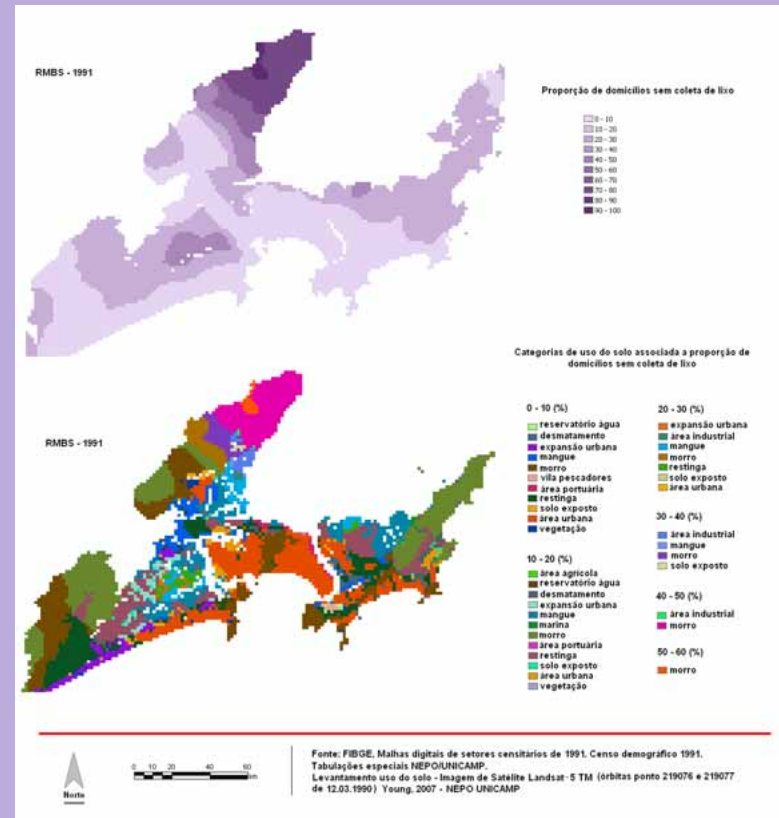
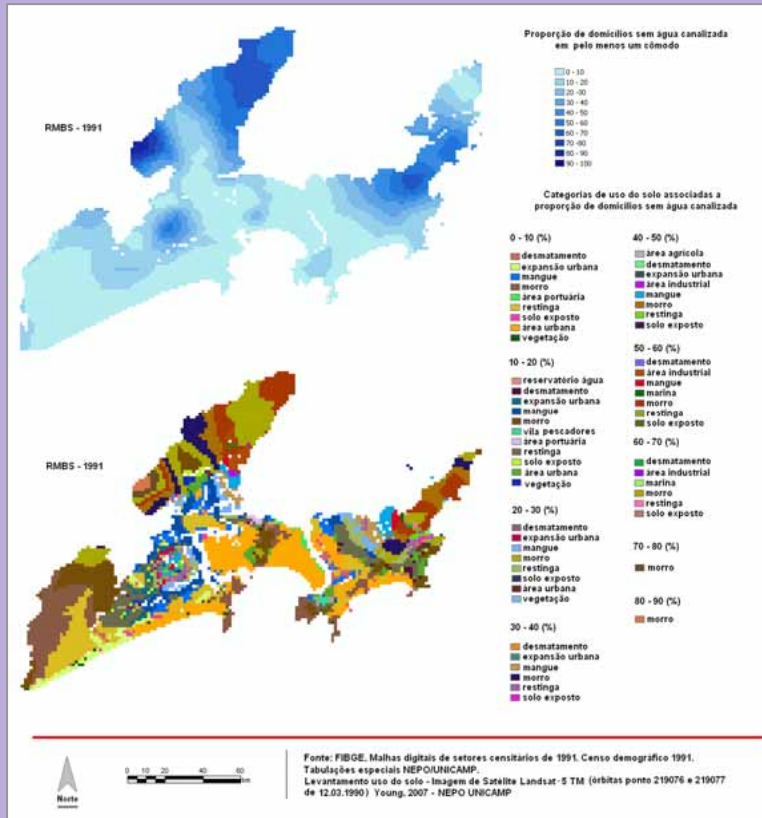
# Population data

## Population characteristic in space



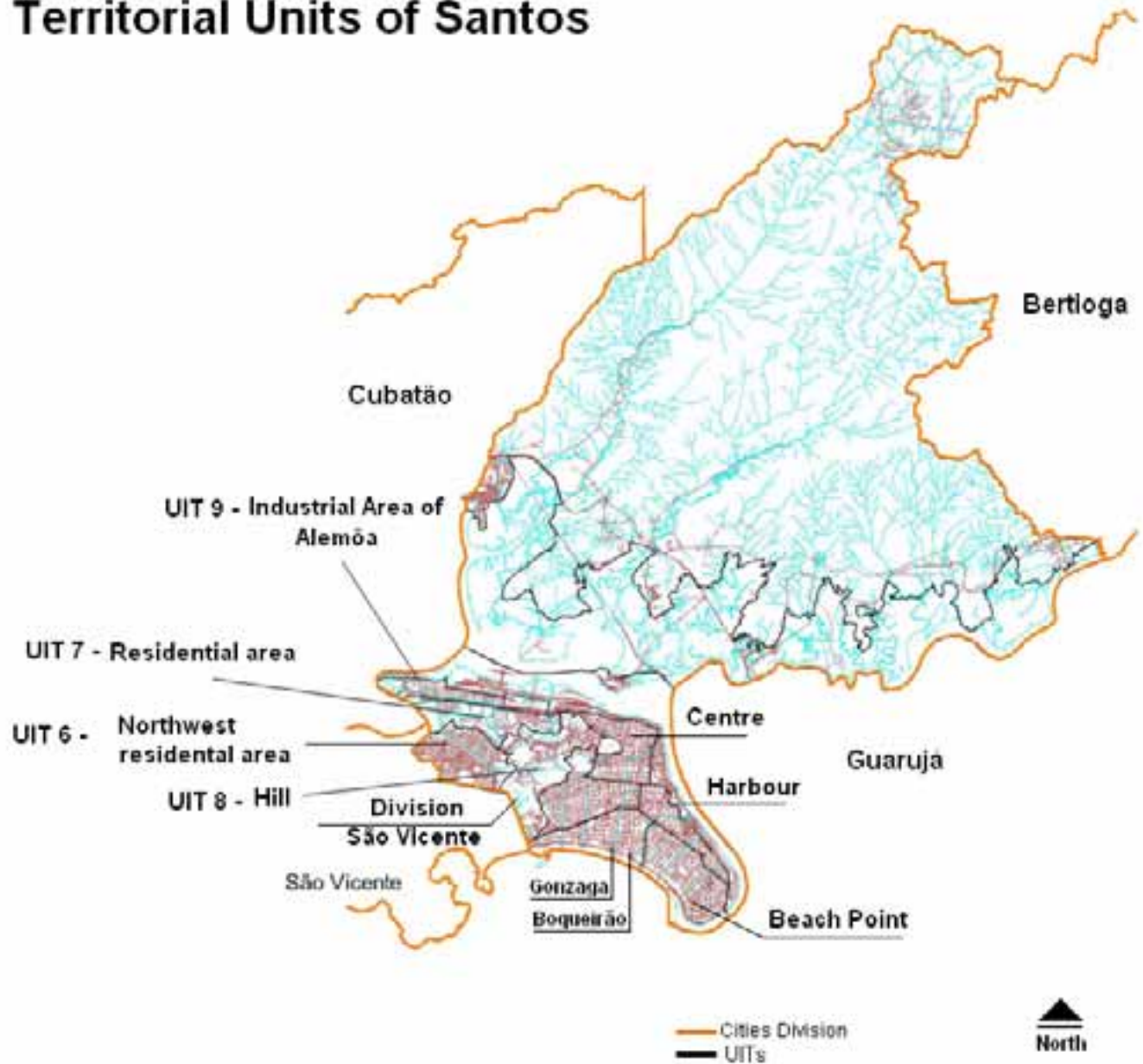
To identify the characteristics of population in these situations it was considered the census data about head household income and domiciliary infrastructure

# Stratification of the Space



It was observed evidence of an increase of the socio-spatial inequalities by the stratification of the space in different social layers where the poor classes were pushed for distant and less valuable places with the worst conditions of infrastructure.

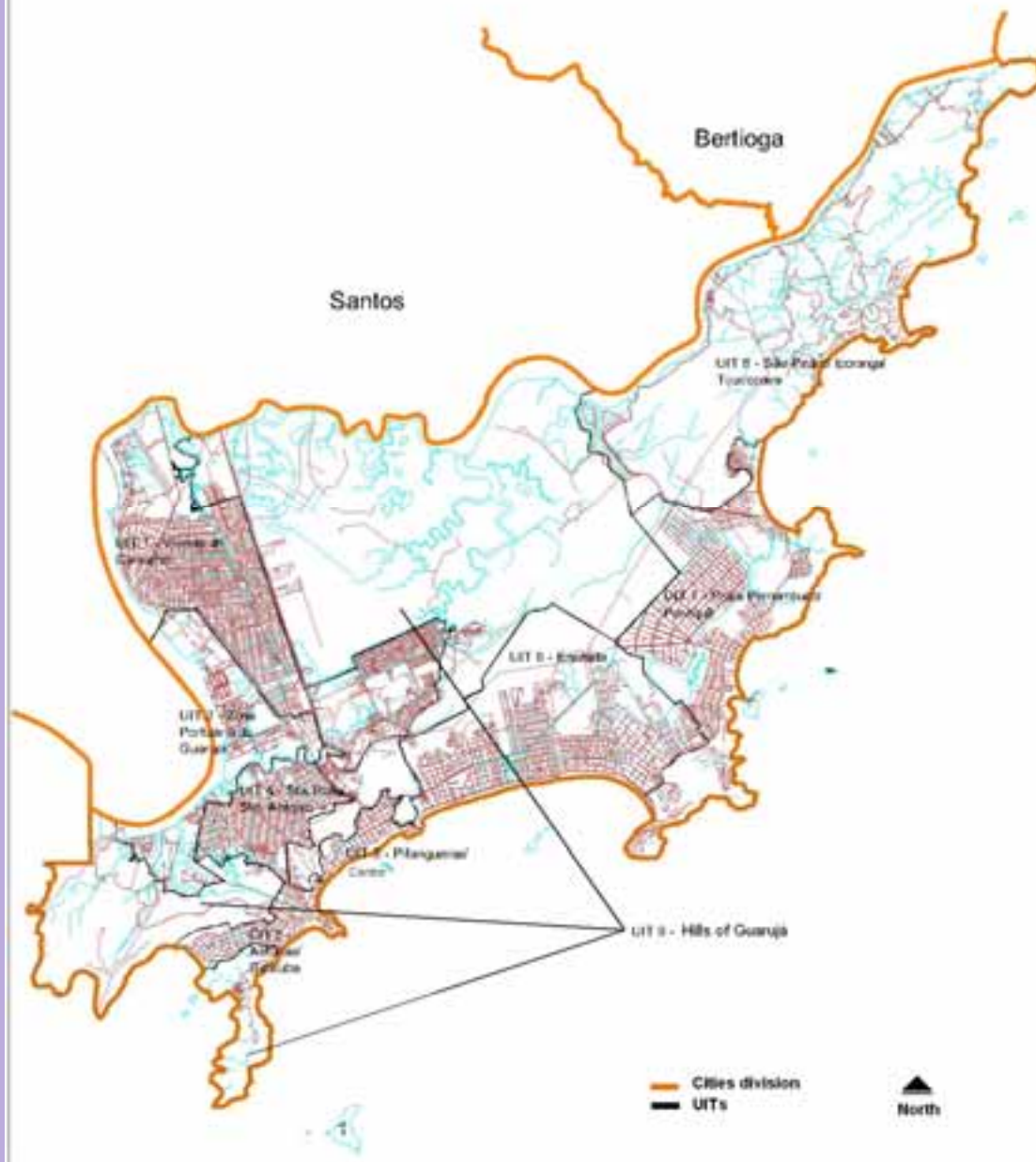
# Territorial Units of Santos



# Territorial Units of São Vicente



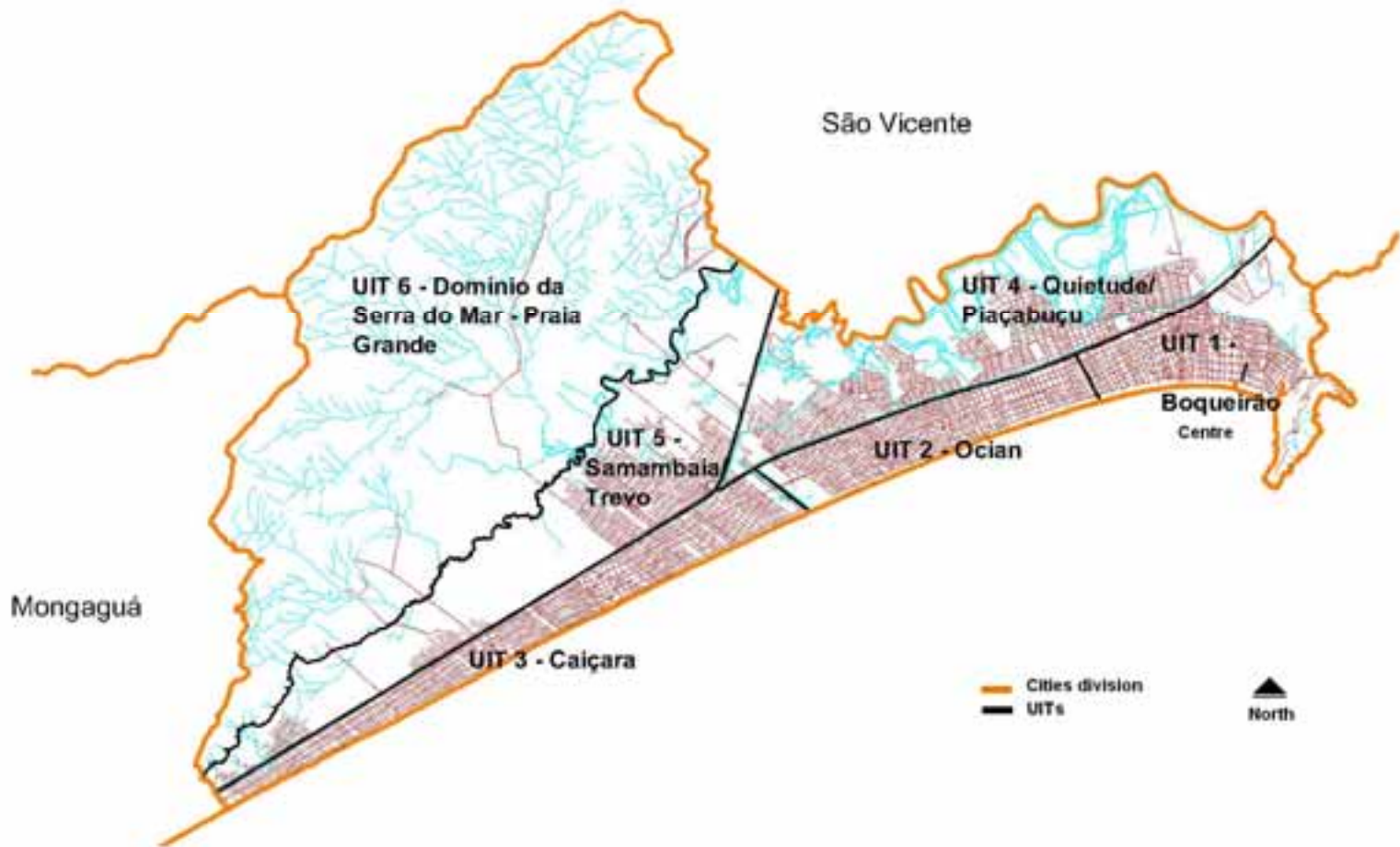
# Territorial Units of Guarujá



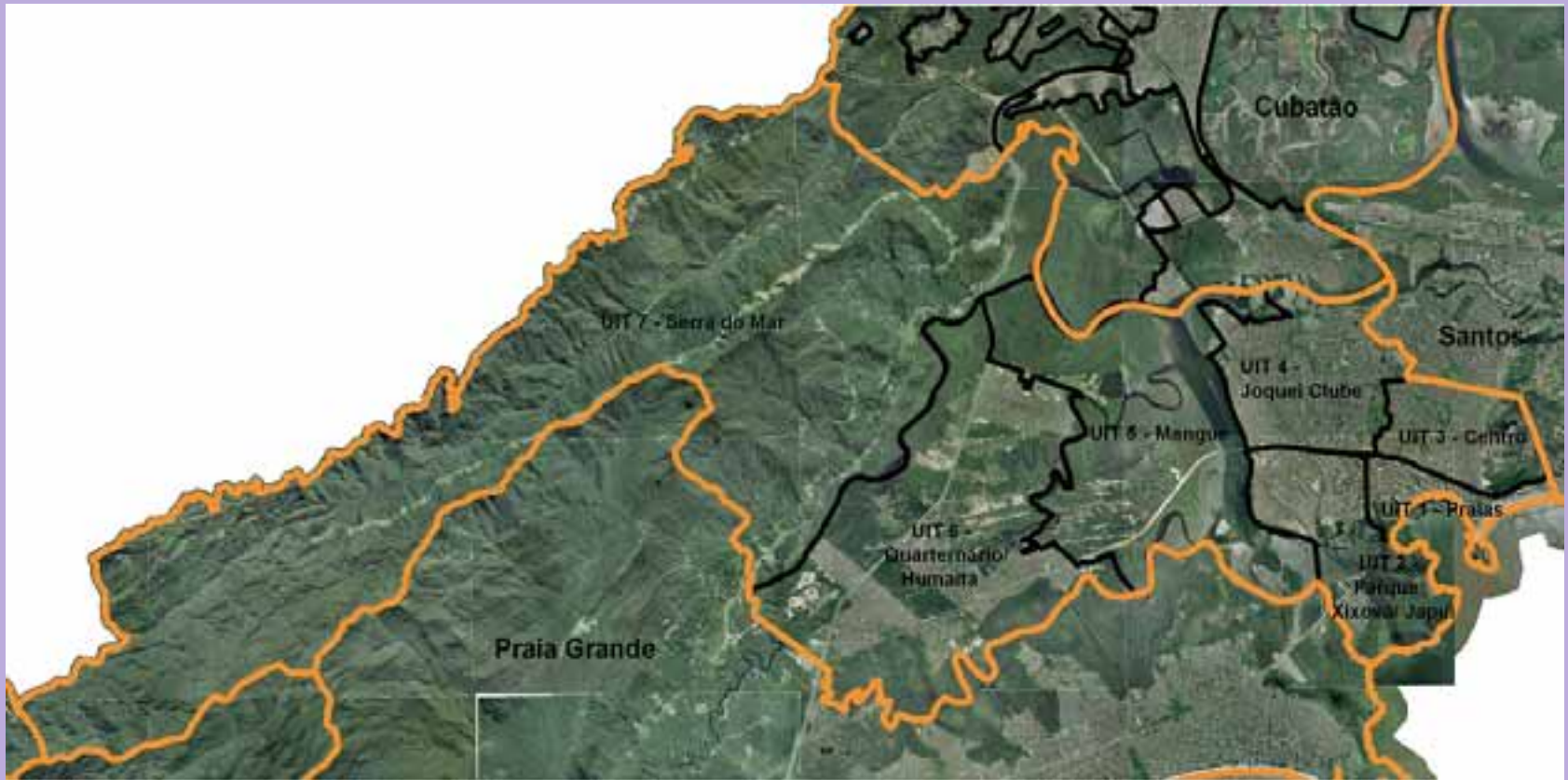
# Territorial Units of Cubatão



## Territorial Units of Praia Grande



# Aerophoto to support L.U. mapping - São Vicente 2003





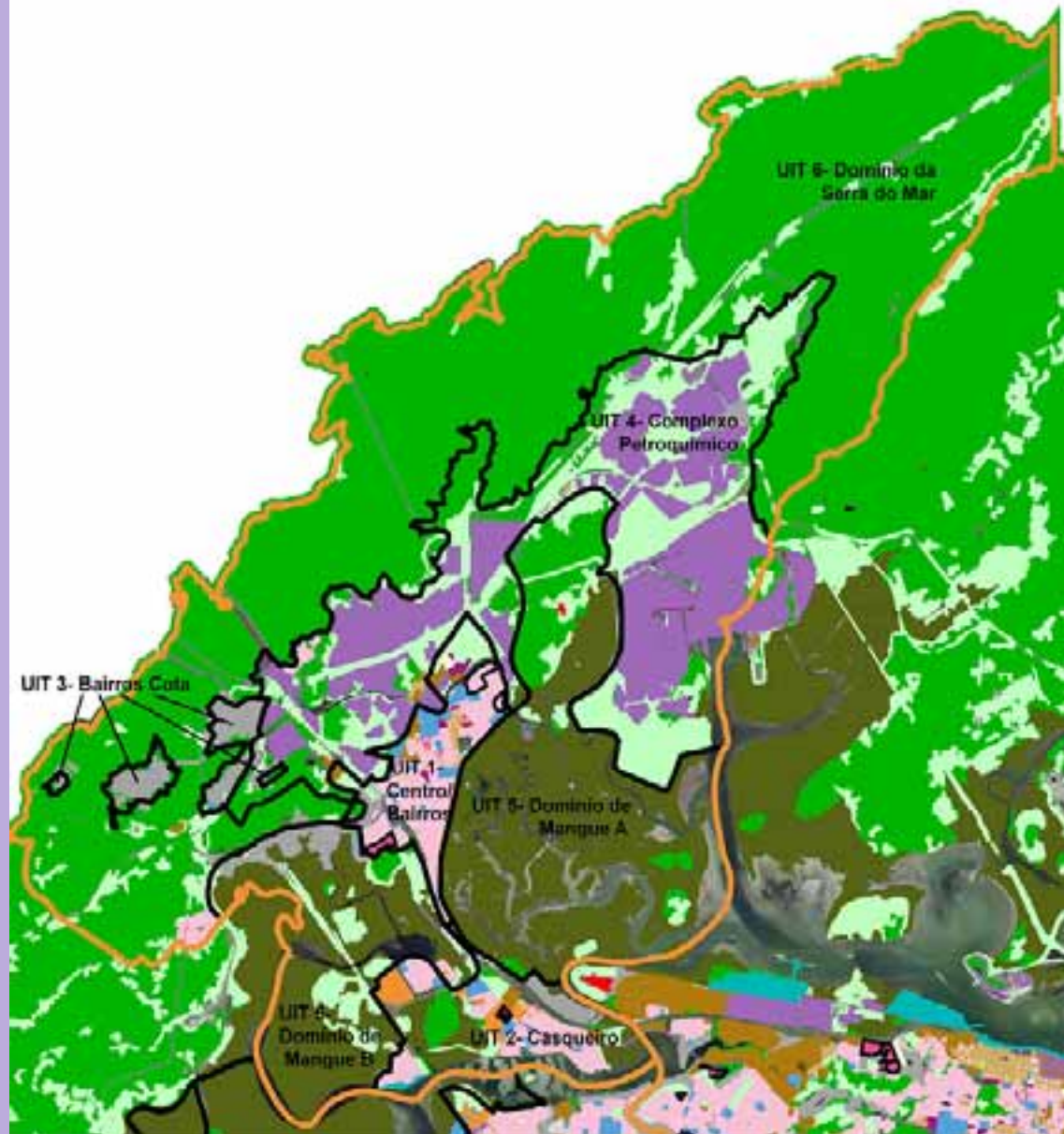
# Land Use Mapping

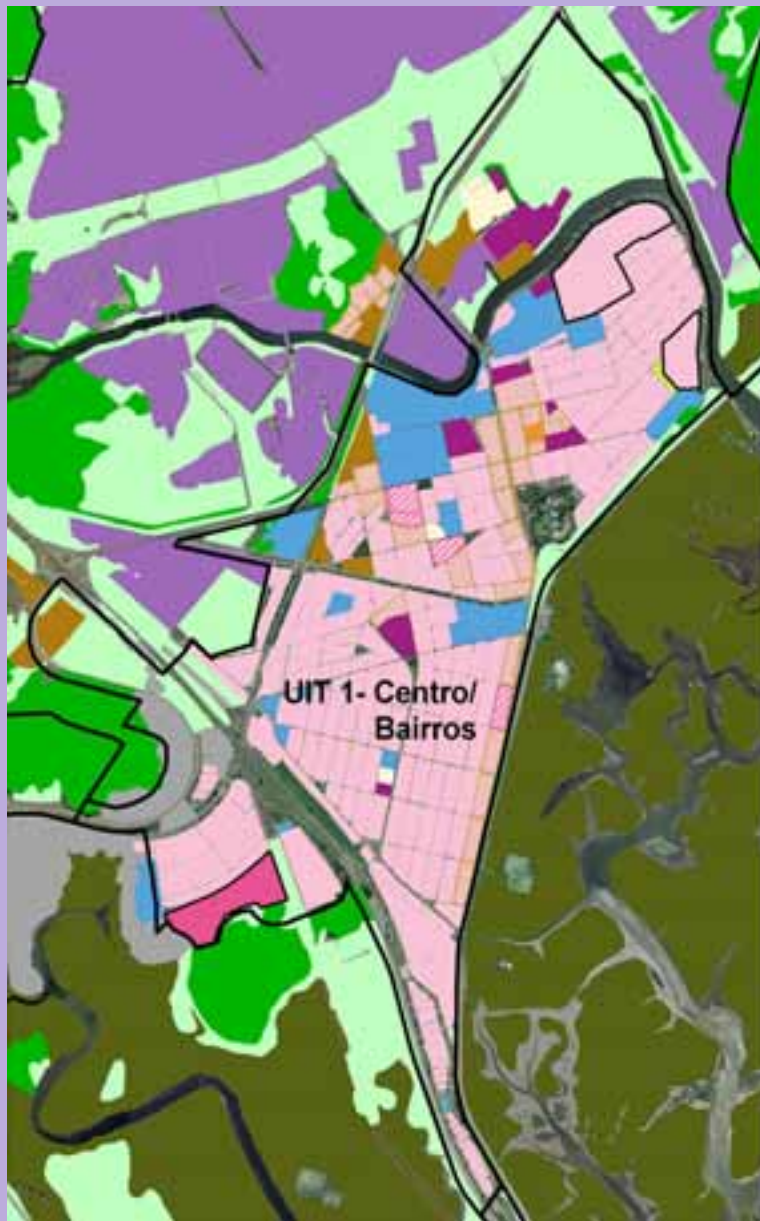


# Aerophoto of Cubatão - 2003



# Land Use - Cubatão





## Land Use - Cubatão

### Residential

- Horizontal 1
- Vertical 1
- Horizontal - Vertical
- Horizontal 2
- Vertical 2
- Vertical 3
- Horizontal 3
- Favela 1
- Favela 2

### Comercial and Services

- Comercial and Services
- Comercial coridor
- Shoppings centres
- Public Services
- Parking

### Industrial

- Industry
- Building Industry
- Road
- Chemical industry

### Hybrid uses

- Residential and Comercial
- Residential and Industrial
- Comercial and Industrial

### Social Facilities

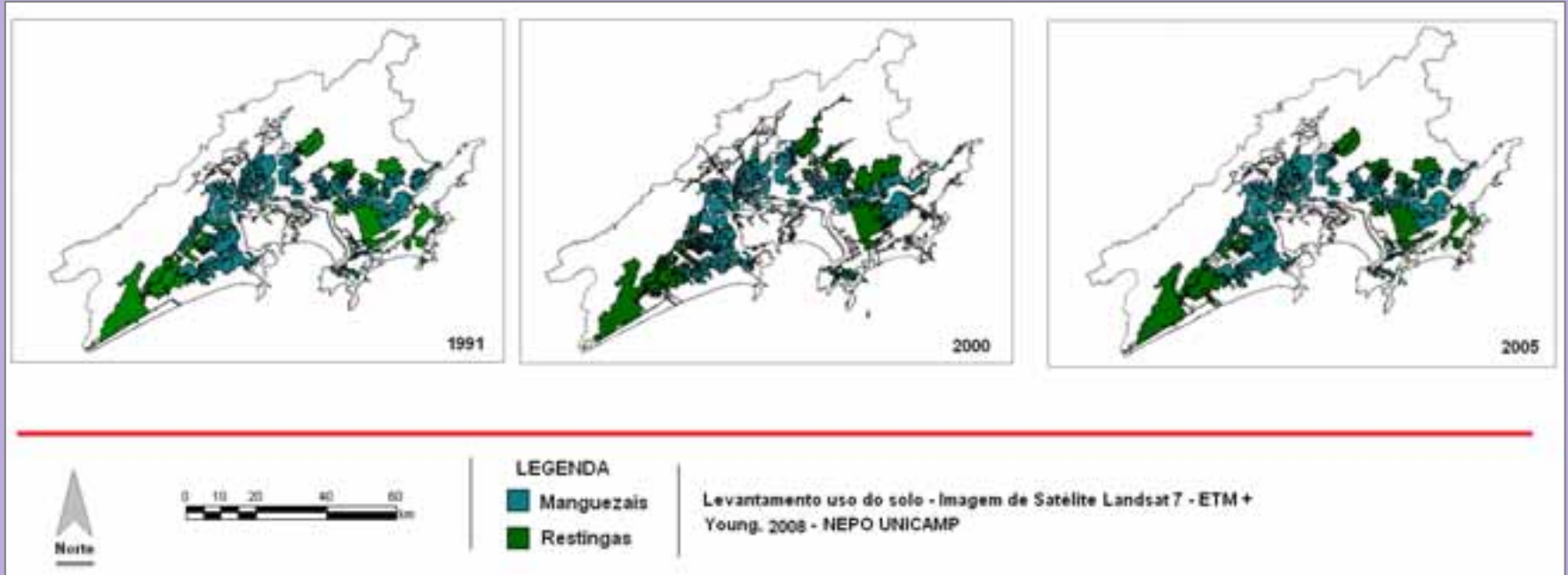
- Plaza
- Educational Places
- Institutions
- Harbour
- Special Occupation
- Sewage Works

### Vegetation categories

- Forest
- Mangue/Restinga
- Agriculture
- Areas of Preservation

City hall decisions – urban zoning

# Vegetation Mapping



**This region has experienced a significant destruction of its wetlands, Atlantic Coast forests and restinga (type of coastal tropical and subtropical moist broadleaf forest) occupied mainly by residential and industrial expansion.**

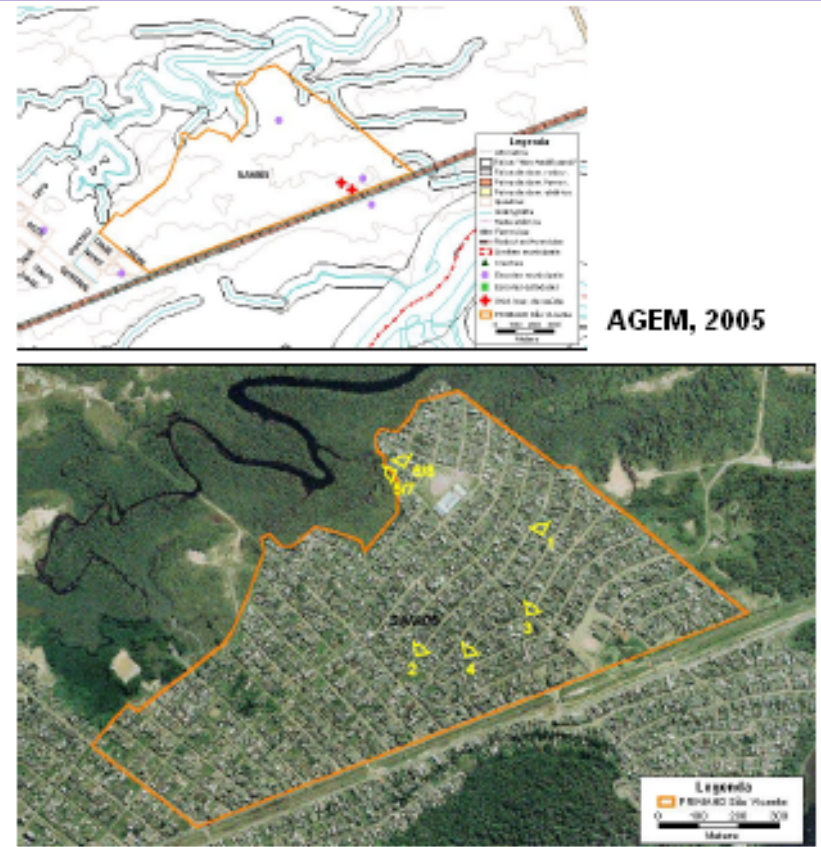
# Risk mapping



**Forested areas were converted in non-forest land for urban and industrial use without any ecological criteria.**

# Risk mapping

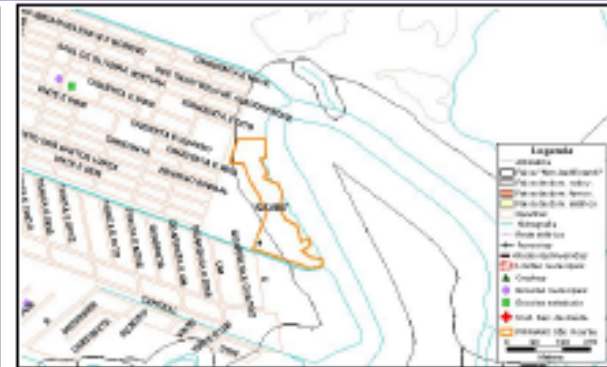
This region is facing an important social challenge caused by an urbanization process with a significant population growth and the increase of pressures on the environment



# Risk mapping

SÃO VICENTE – HUMAITÁ

The idea was to identify spaces of vulnerability through the environmental risk mapping, for example, people living in areas of flooding or landslide

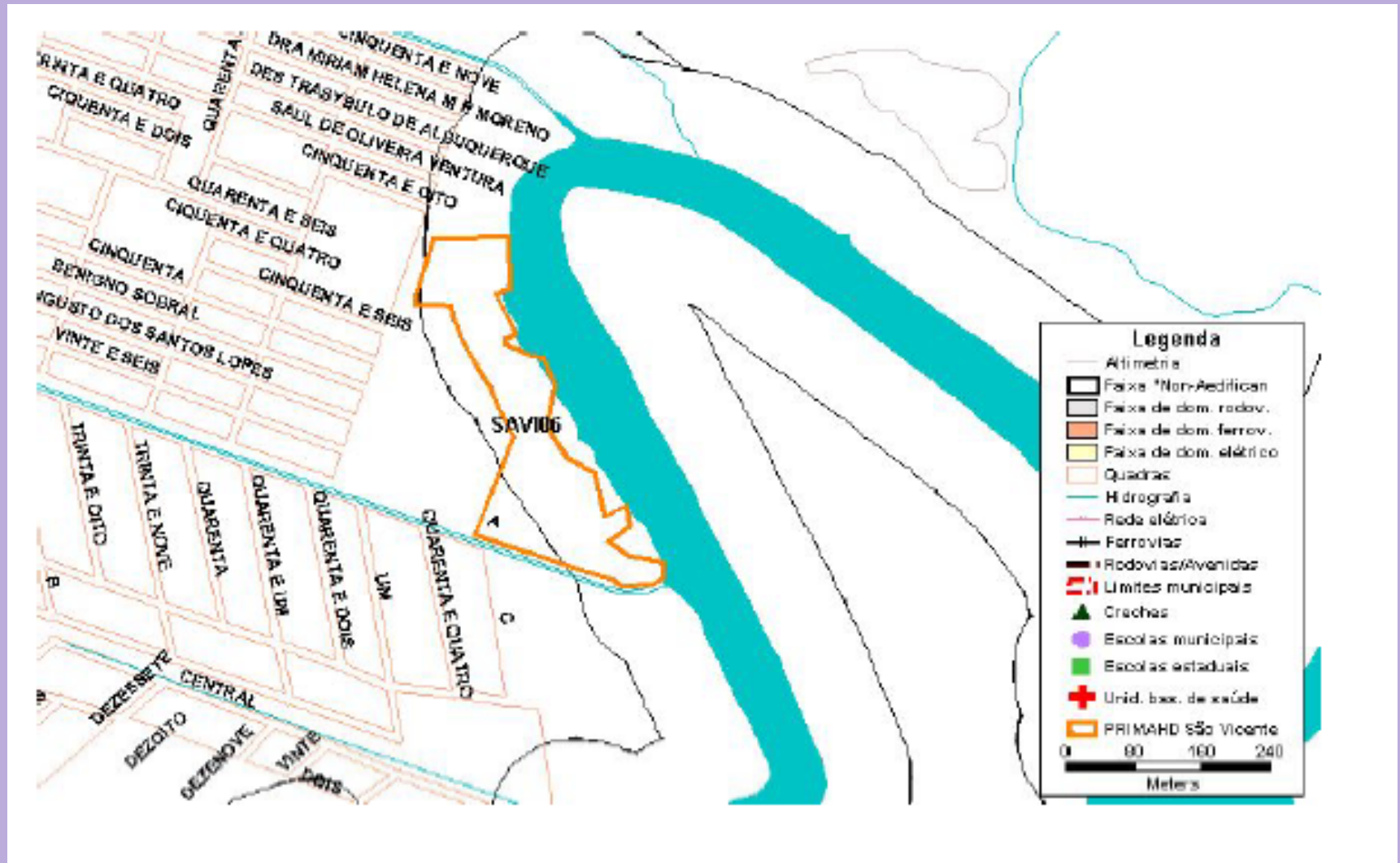


AGEM, 2005





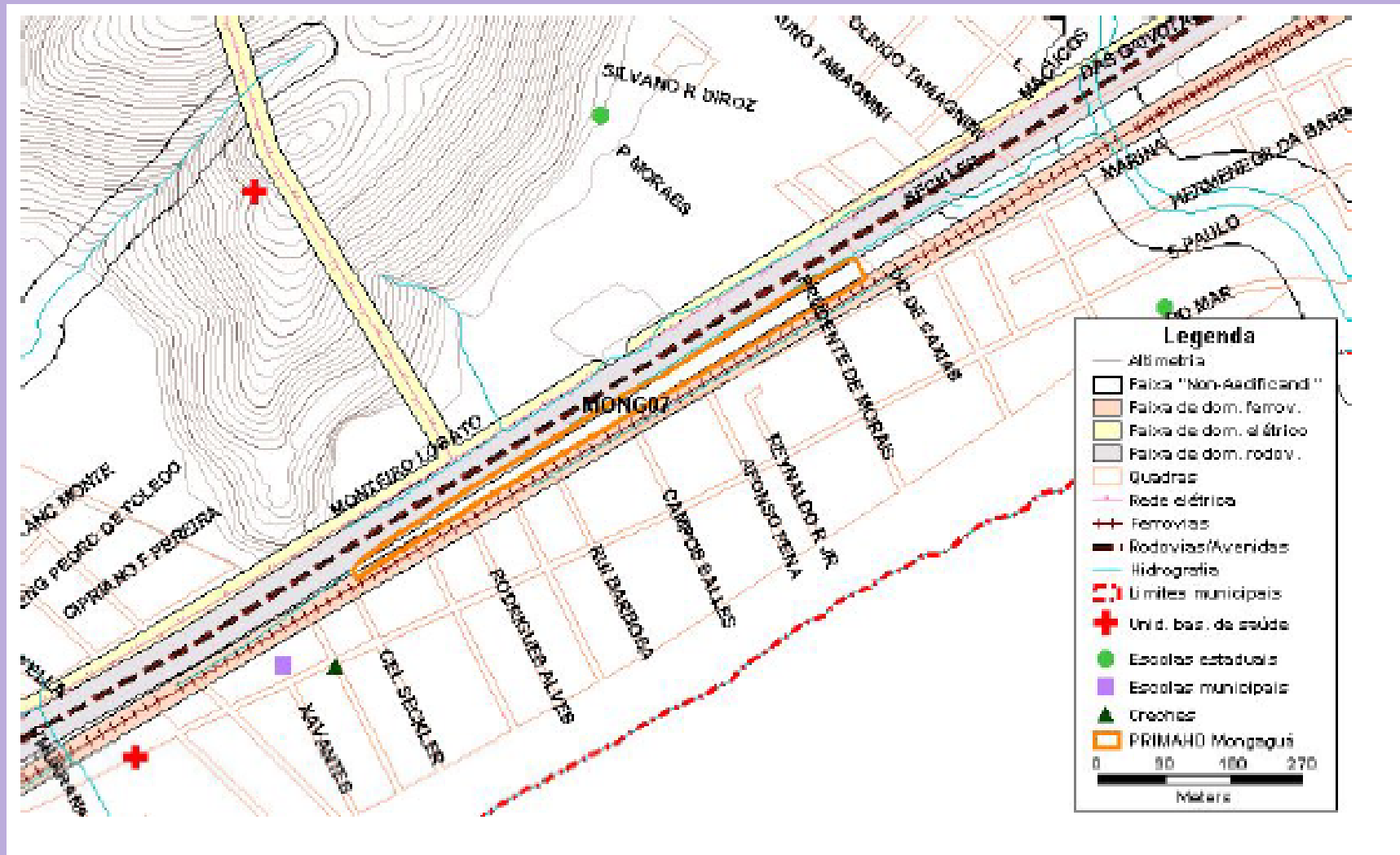
# Risk mapping



# Risk mapping in areas of Road and Railway



# Risk mapping in areas of Road and Railway



## People Living in areas of Mangué (wetland)



It becomes urgent the establishment of strategies for a more efficient occupation of the territory and use of the natural resources seeking to reduce environmental threats that put the coastal population at risk.



UIT 1 -  
Centro/  
Boqueirão

# Different patterns of occupation - income reasons



# Social Dissimilarities: People living in inadequate areas

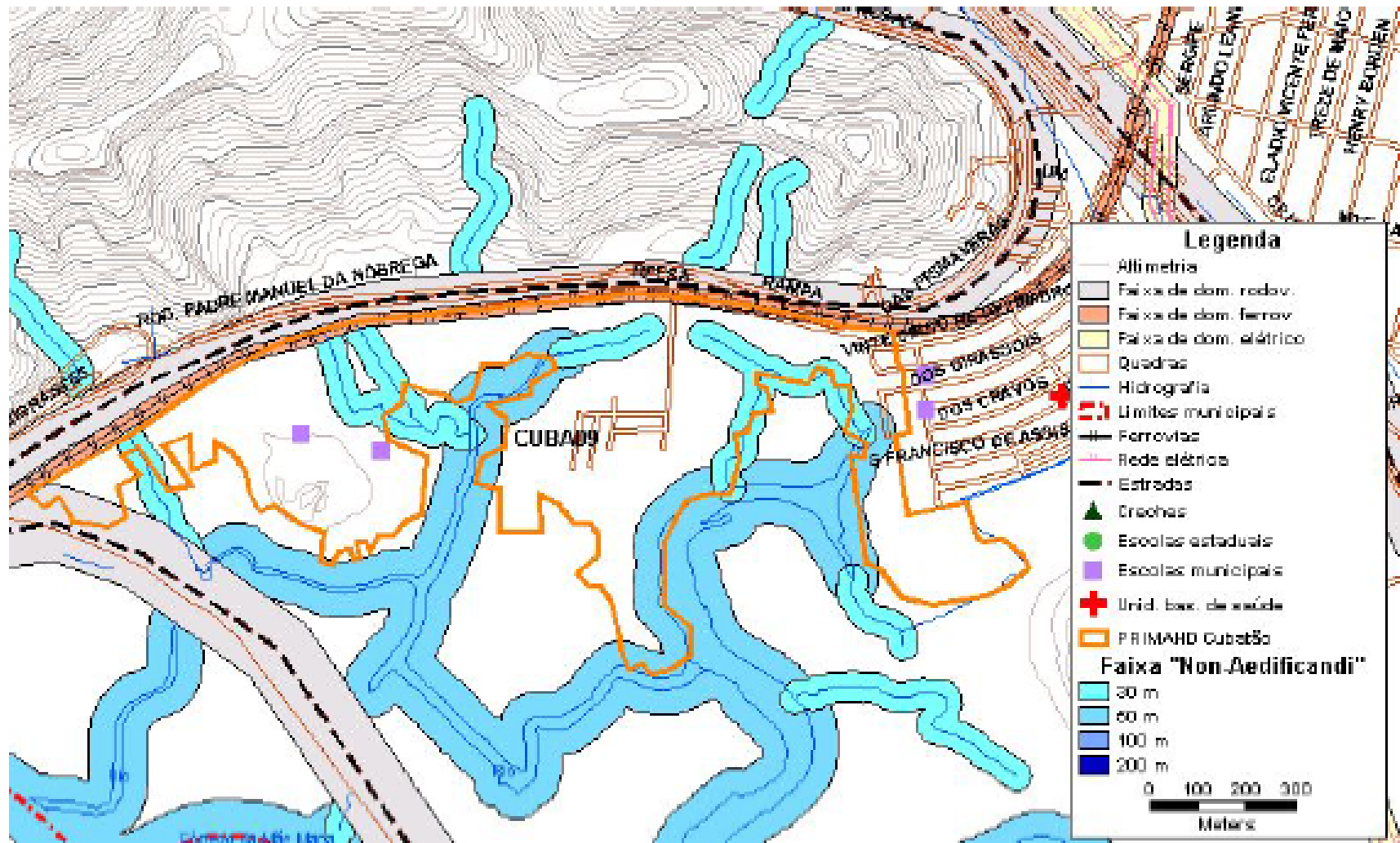


# People Living in areas of landslide (areas of drainage)





# People Living in areas of landslide (areas of drainage)



# Panoramic View of Manguezal behind of Mountain



# Cota Neighborhood at Mountain



# People Living in Areas of Landslide

