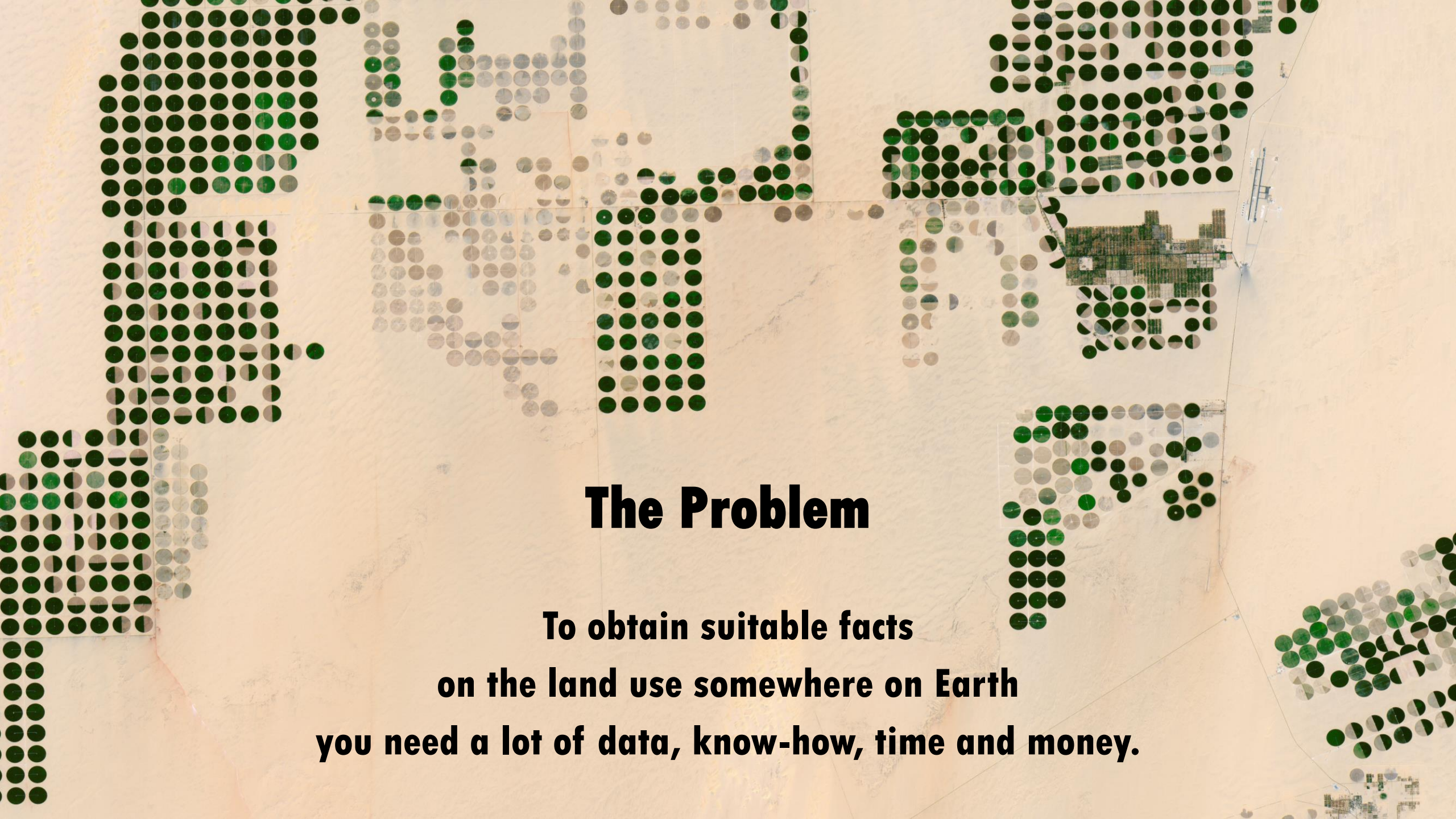


# GREENSPIN

## **Earth Observation and Artificial Intelligence – Applications in Agriculture**

**Dr. Sebastian Fritsch**

**UNISPACE+50 Space and Industries Panel  
June 18, 2018**



# **The Problem**

**To obtain suitable facts  
on the land use somewhere on Earth  
you need a lot of data, know-how, time and money.**

# Our Solution



**AILEO – an Artificial Intelligence Learning Earth Observation to automatically deliver facts on land use in near real-time.**

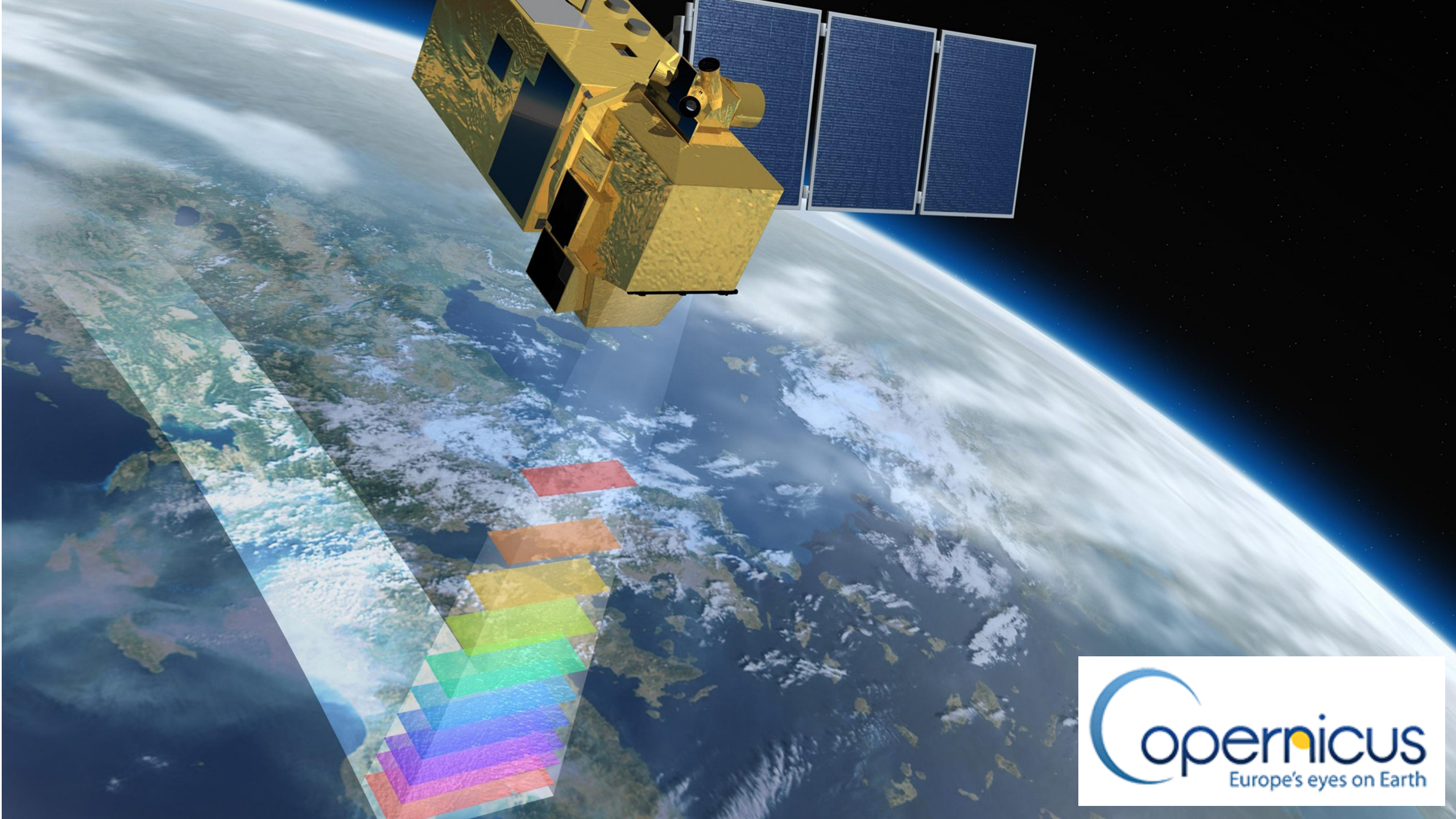
The background of the slide is a high-resolution aerial satellite image of a rural landscape. The image shows a grid of agricultural fields. Many of these fields are overlaid with semi-transparent red circles and squares of various sizes, representing the training data for a deep learning algorithm. The overall color palette is a mix of natural greens and browns, with the artificial red overlays creating a high-contrast, data-driven visual.

**What we do**

**We feed deep learning algorithms  
with millions of satellite images**

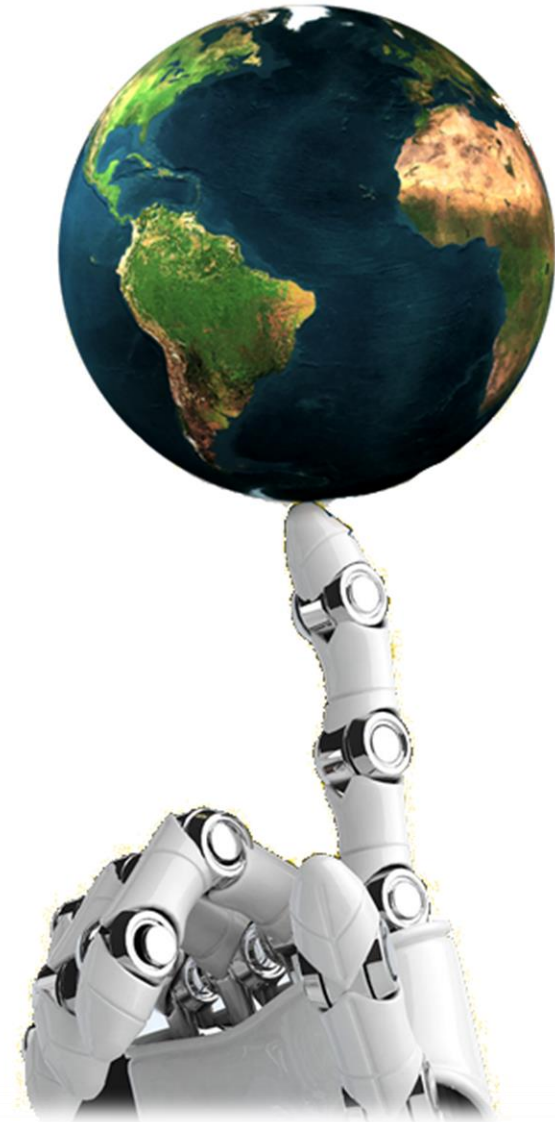
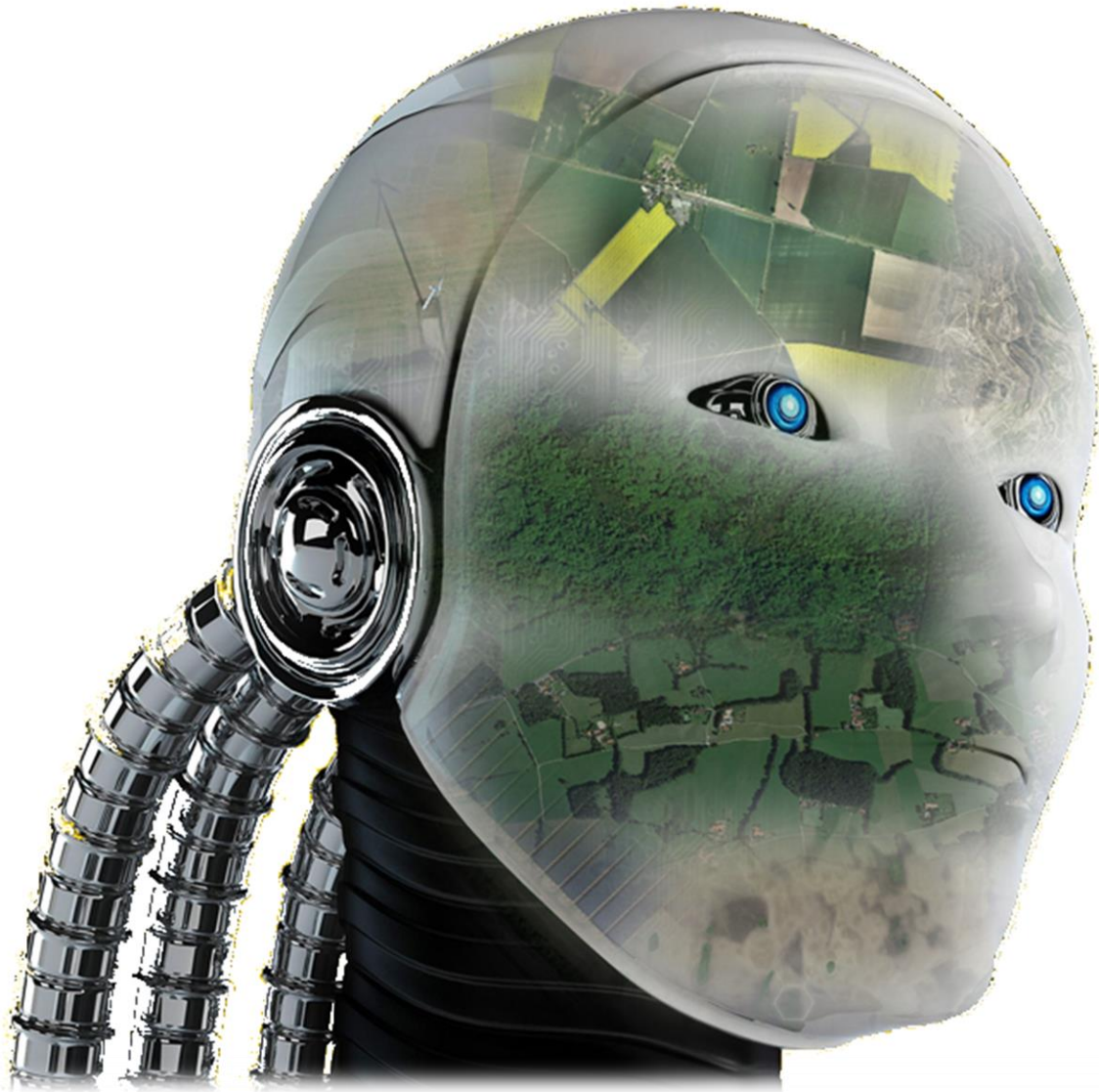
**Our purpose is to digitize and quantify  
the terrestrial environment of the Earth.**







# Artificial intelligence and Earth Observation







# Dog or cat?



Blue channel

Green channel

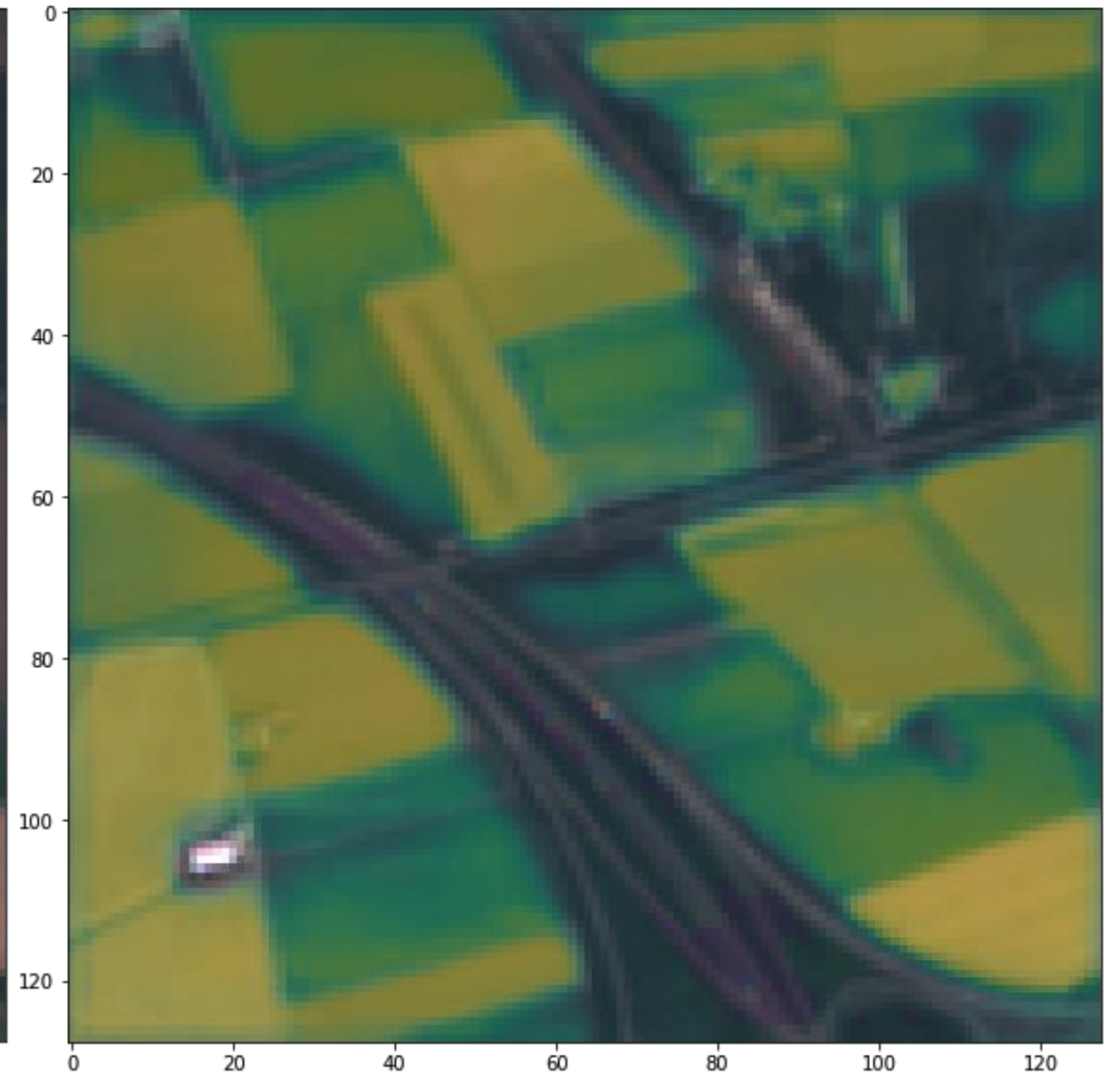
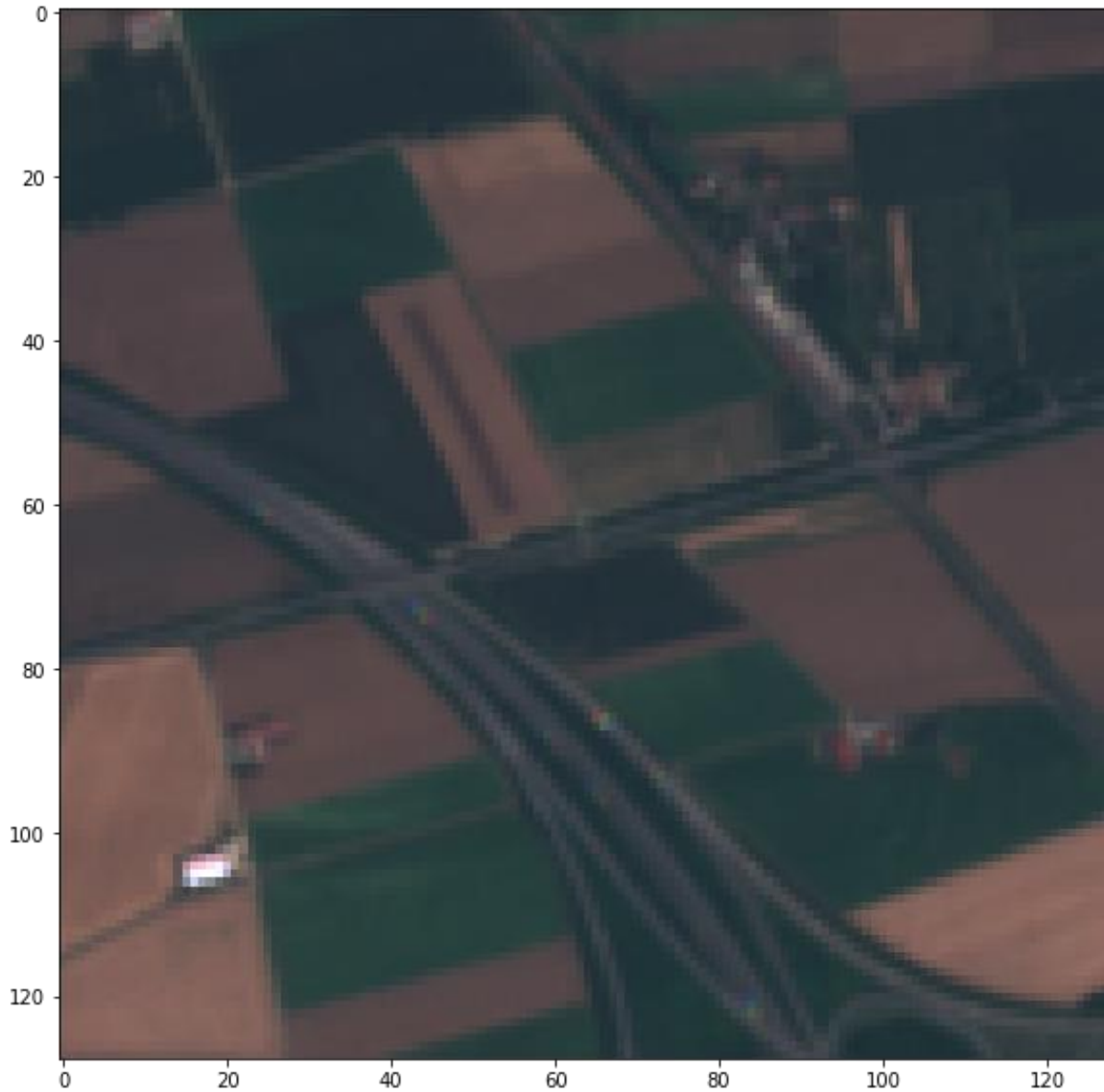
Red channel

	171	200	19	6	...	26	
	24	56	230	1	...	8	
1	120	67	89	107	...	13	89
							18
2	12	216	145	26	...	181	8
							81
3	0	16	4	45	...	44	71
							56
4	0	78	90	167	...	25	...
							...
...	...	...	...	...	...	...	7
							12
64	12	67	82	141	...	12	
	1	2	3	4	...	64	

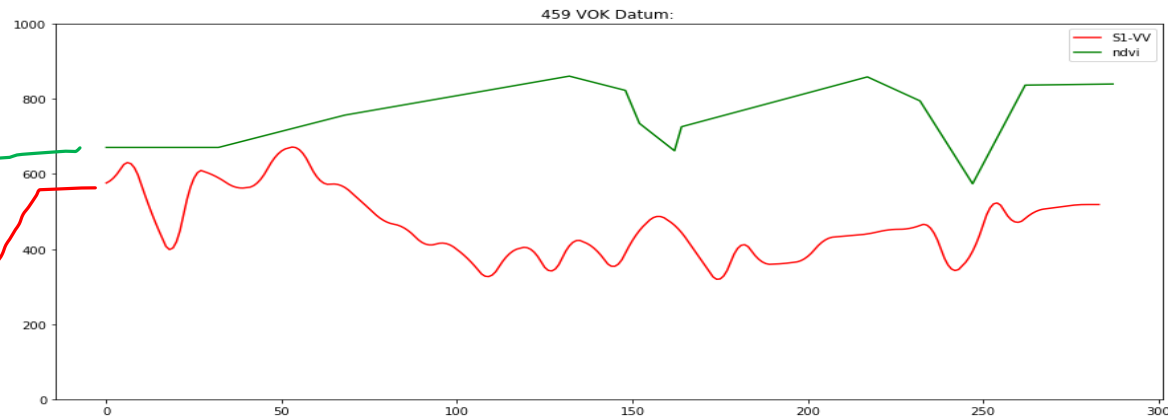
Image array: [64 x 64 x 3]



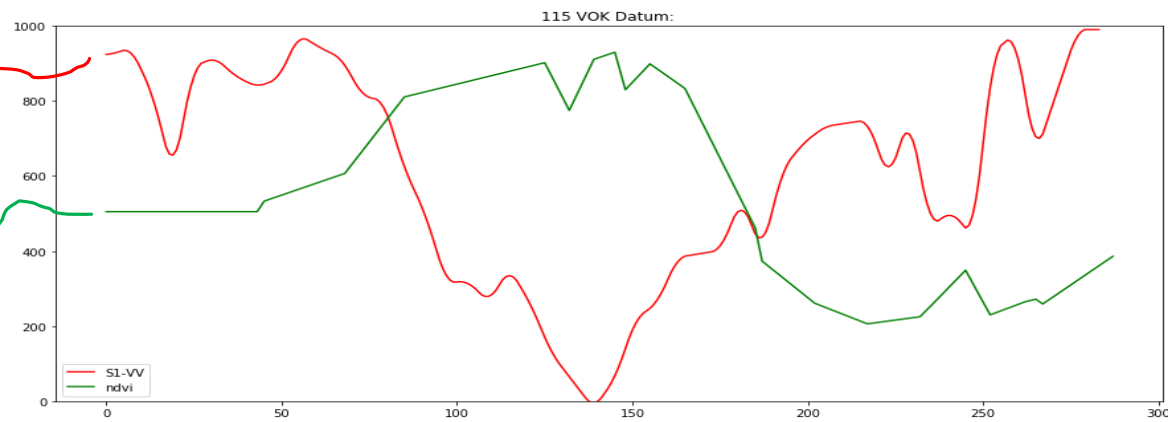
# Field or no field?



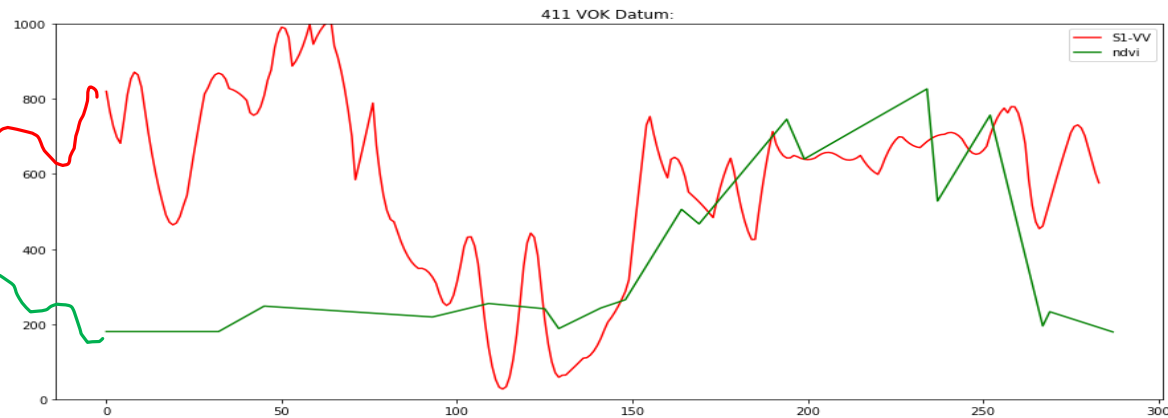
# Which crop?



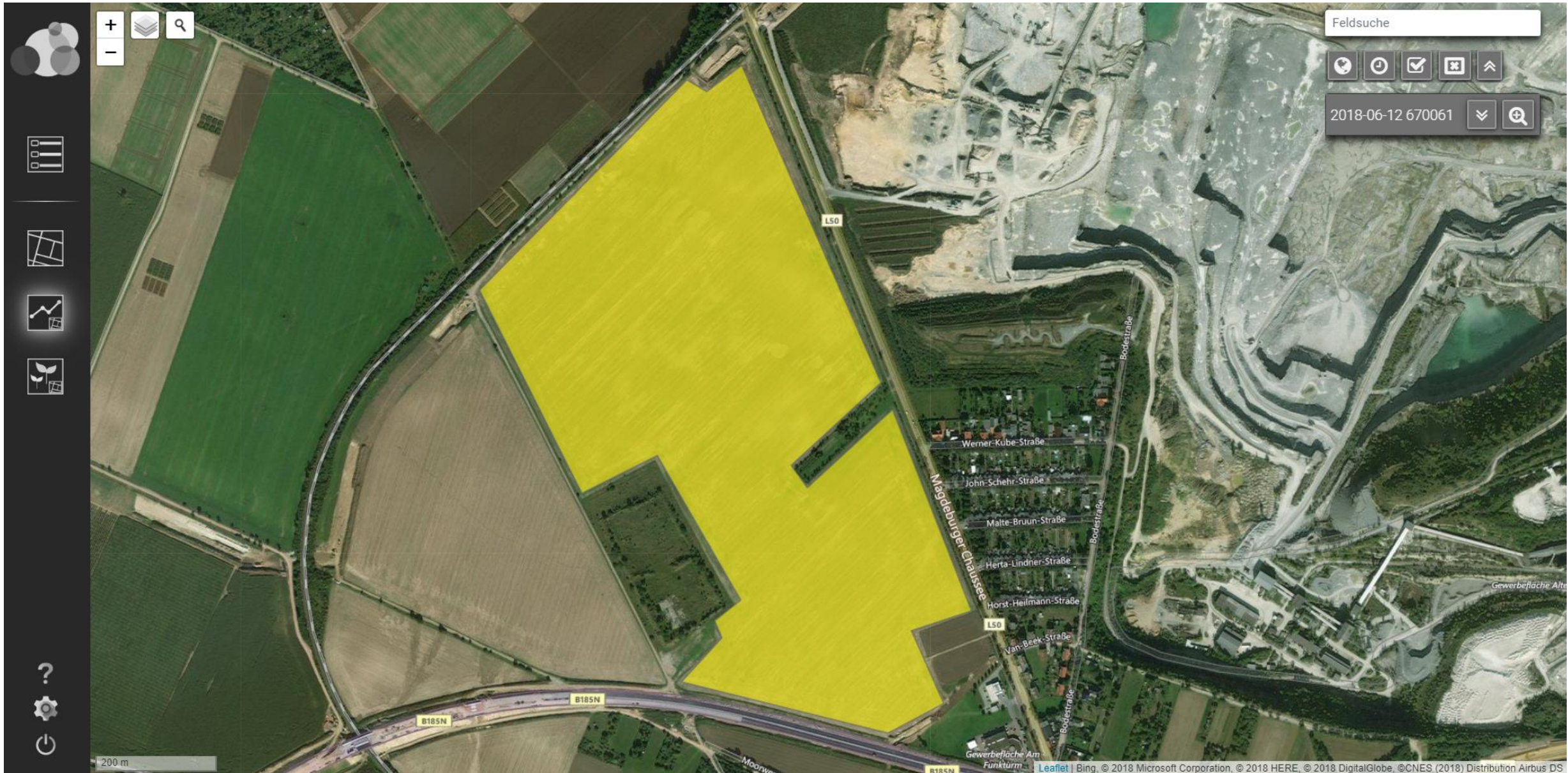
Grassland

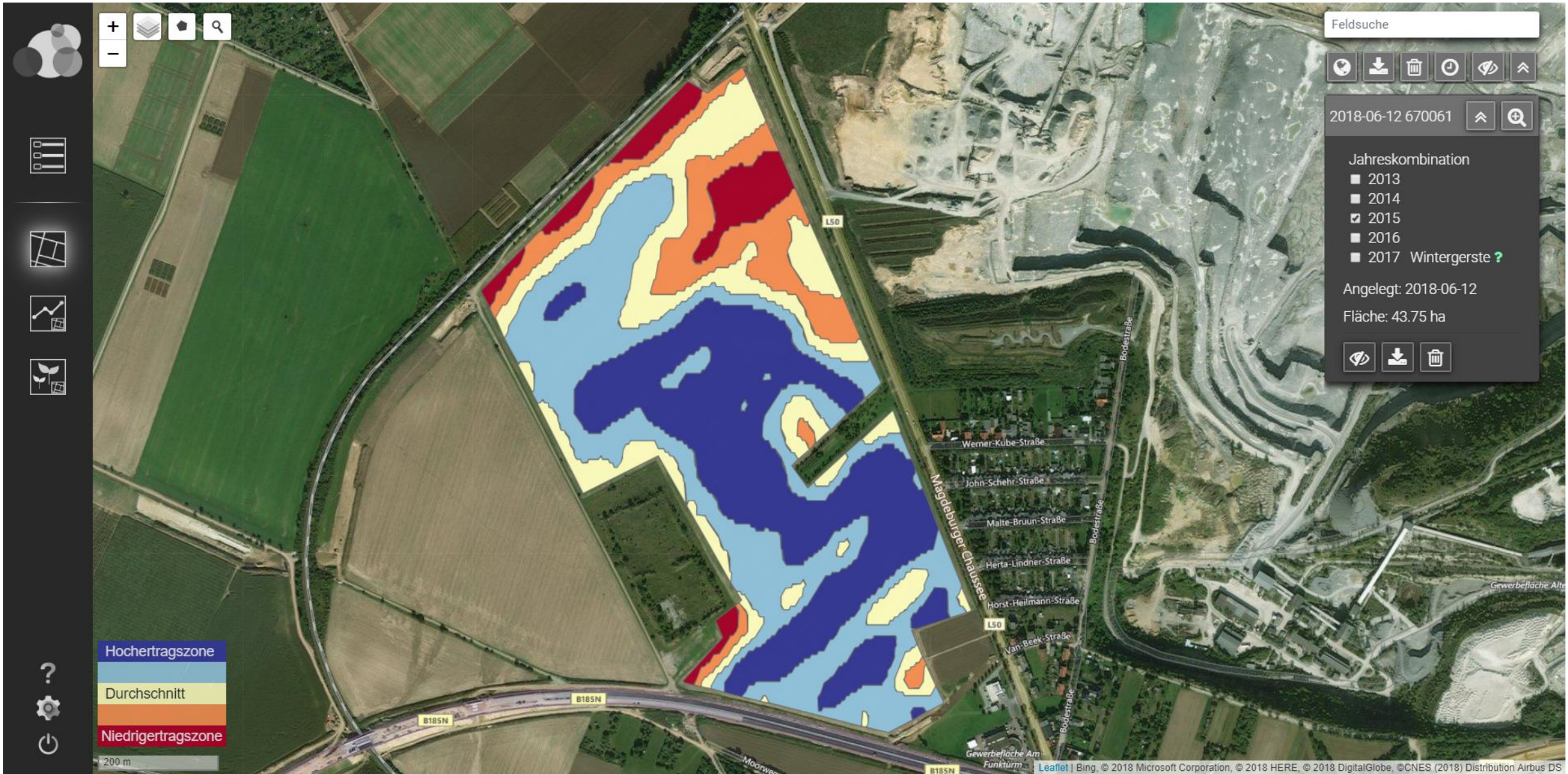


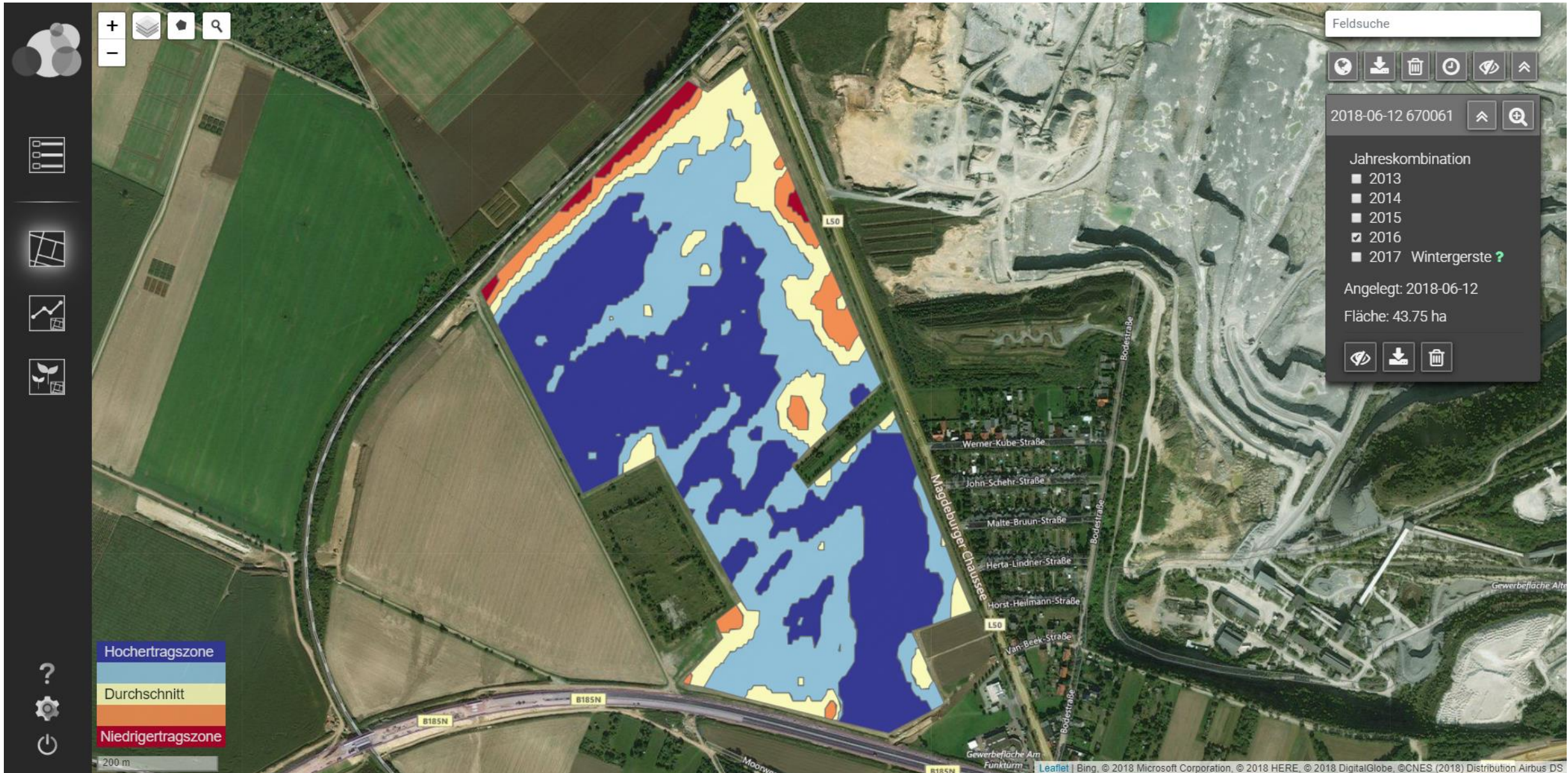
Winter wheat

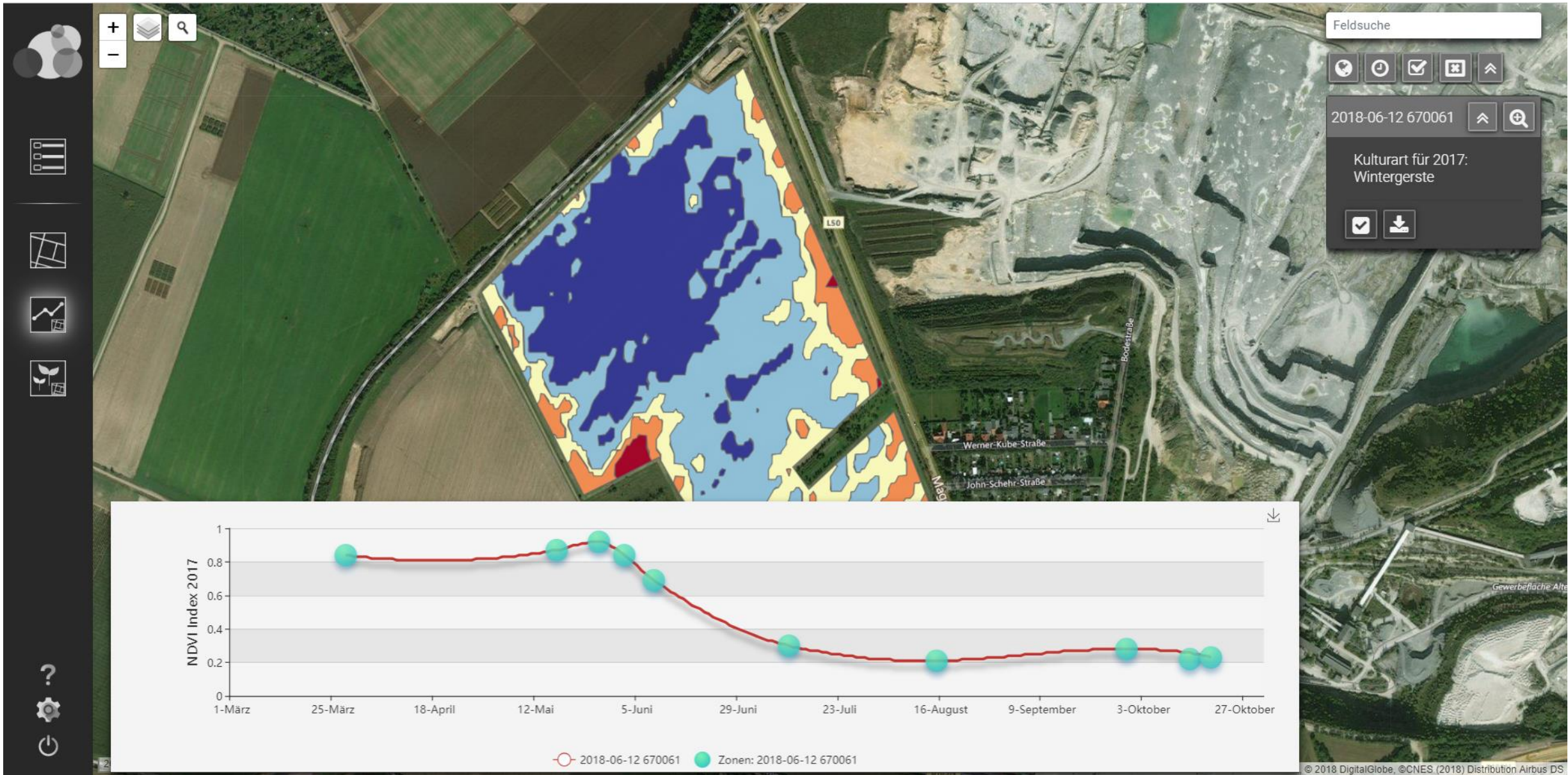


Corn







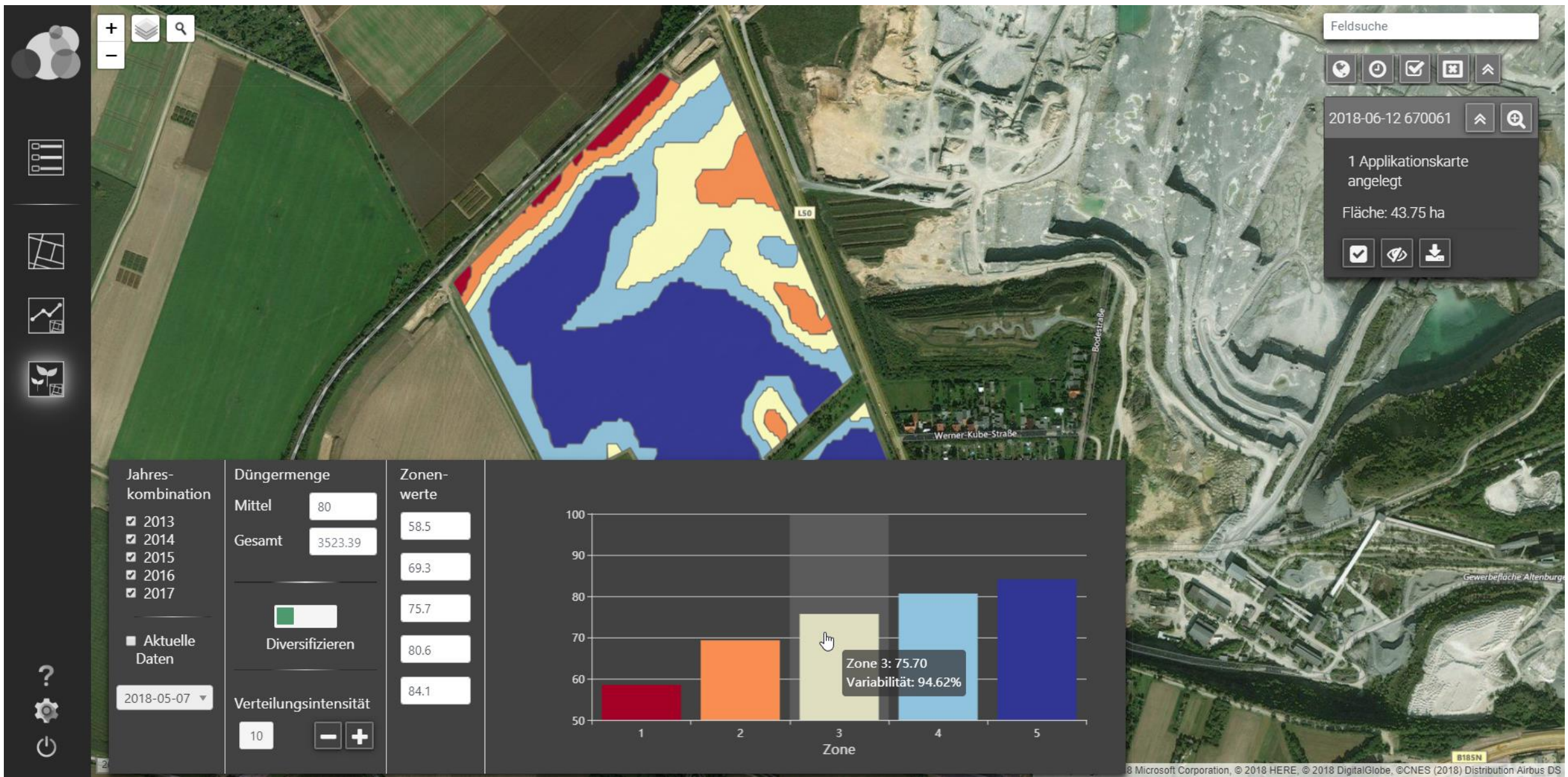


Feldsuche

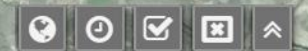
2018-06-12 670061

Kulturart für 2017:  
Wintergerste





Feldsuche



2018-06-12 670061

1 Applikationskarte angelegt

Fläche: 43.75 ha



Jahreskombination

- 2013
- 2014
- 2015
- 2016
- 2017

Aktuelle Daten

2018-05-07

Düngermenge

Mittel 80

Gesamt 3523.39



Diversifizieren

Verteilungsintensität

10

Zonenwerte

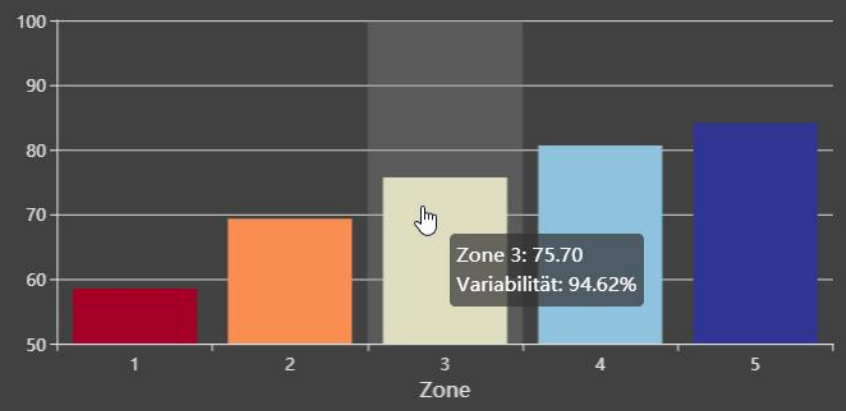
58.5

69.3

75.7

80.6

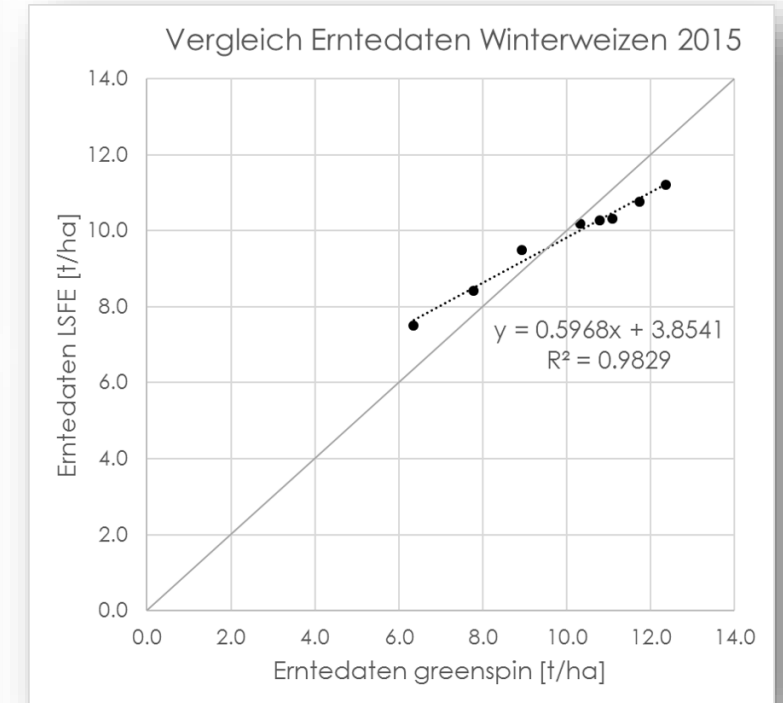
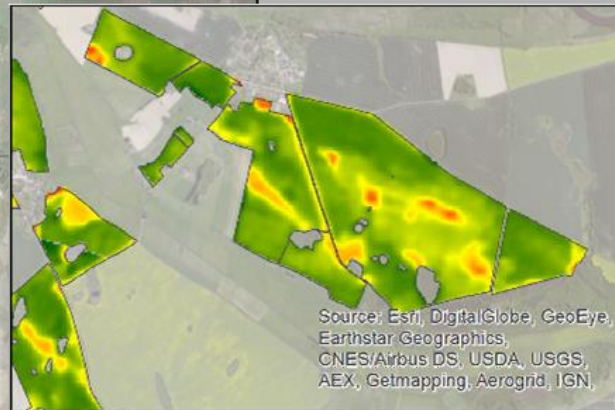
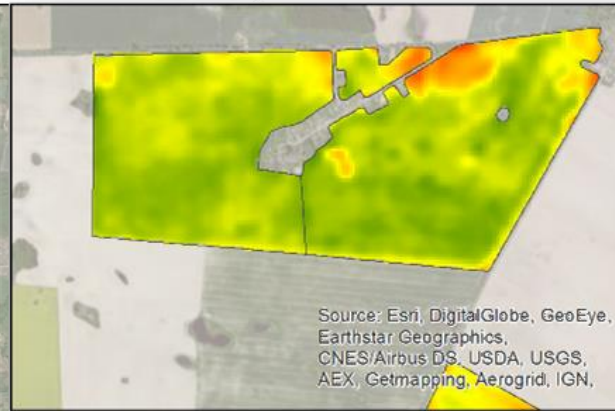
84.1



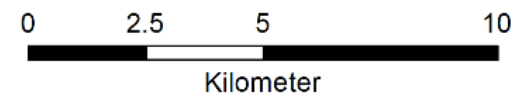
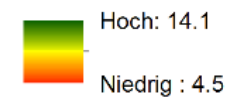


Variable-rate nitrogen fertilization in practice

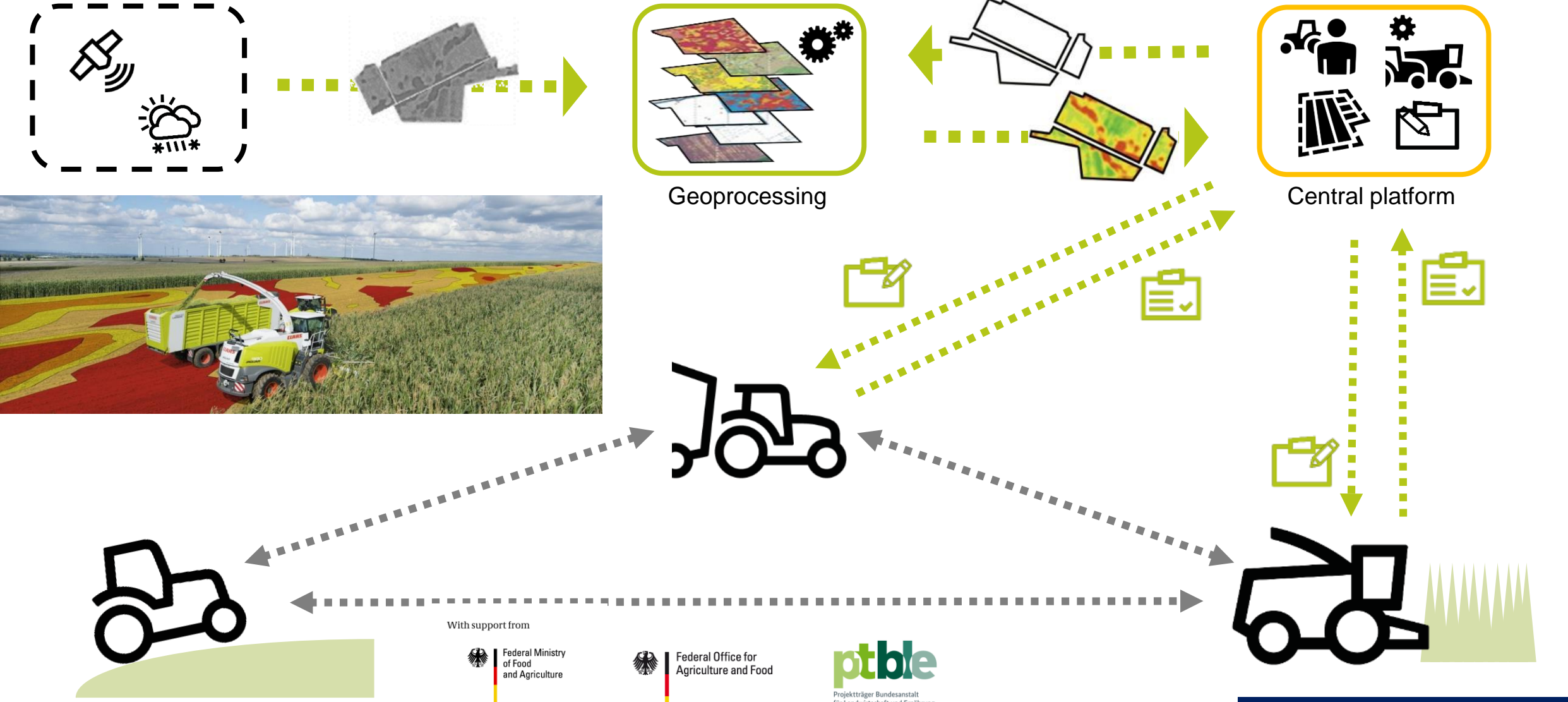
# Crop yield estimation



## Winterweizenertrag [t/ha]



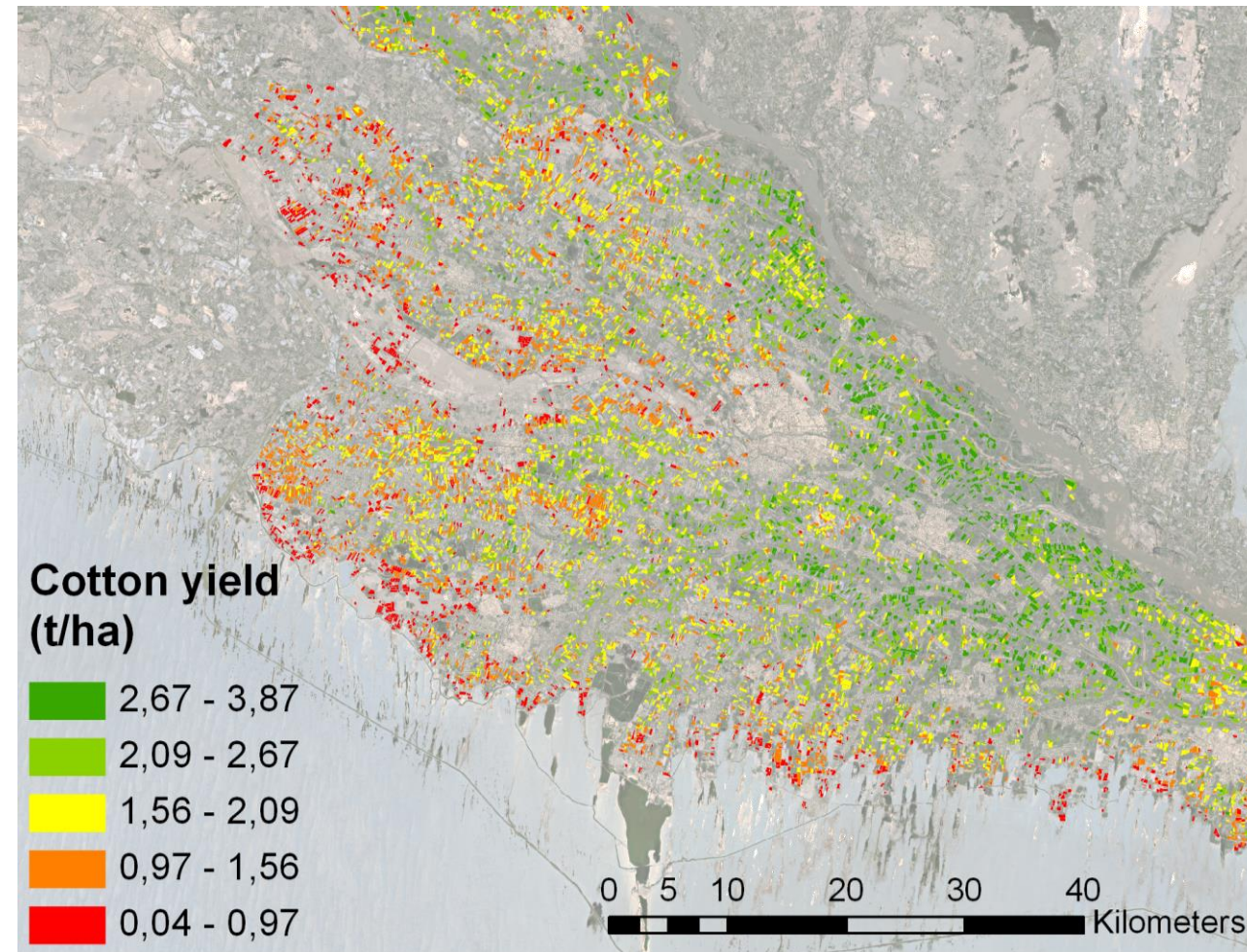
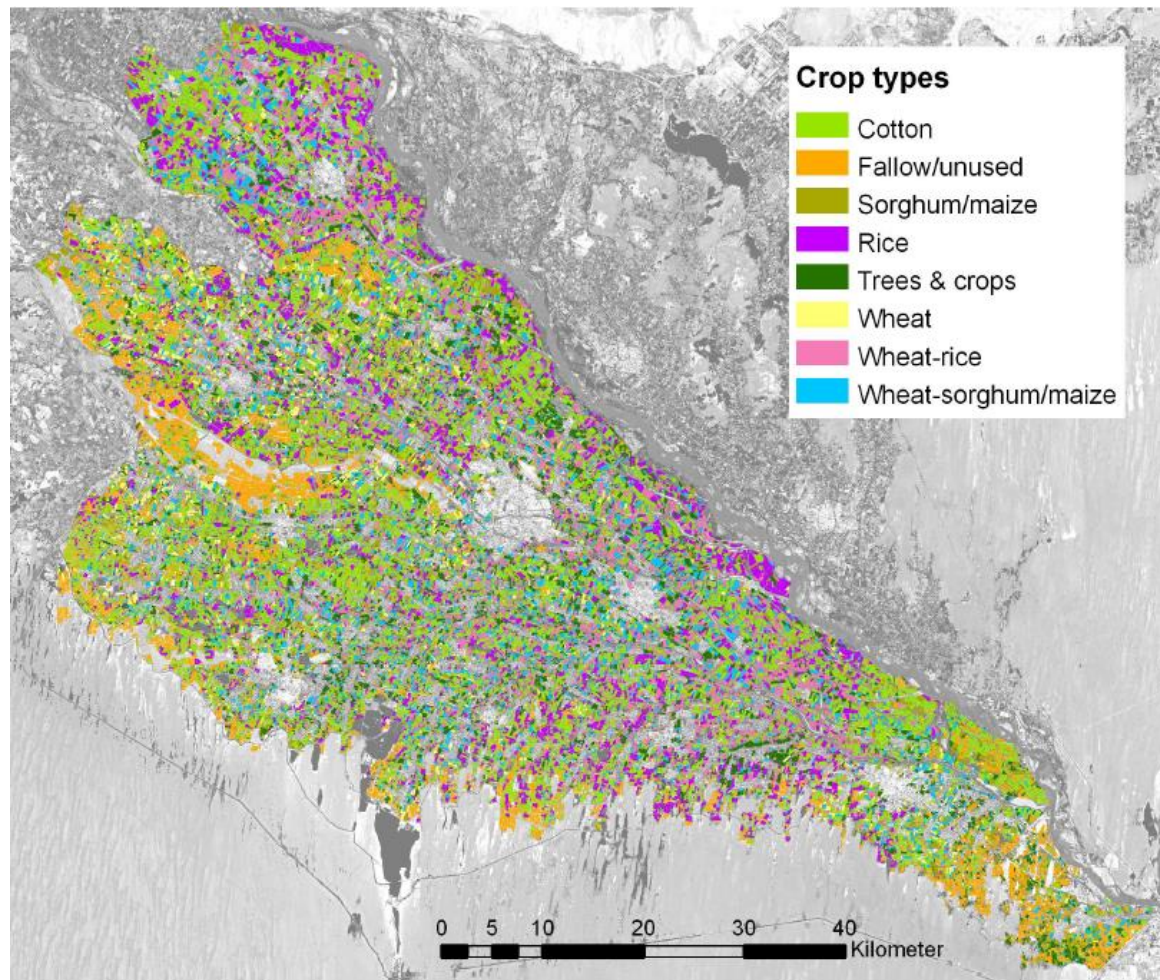
# Optimization of the harvesting process

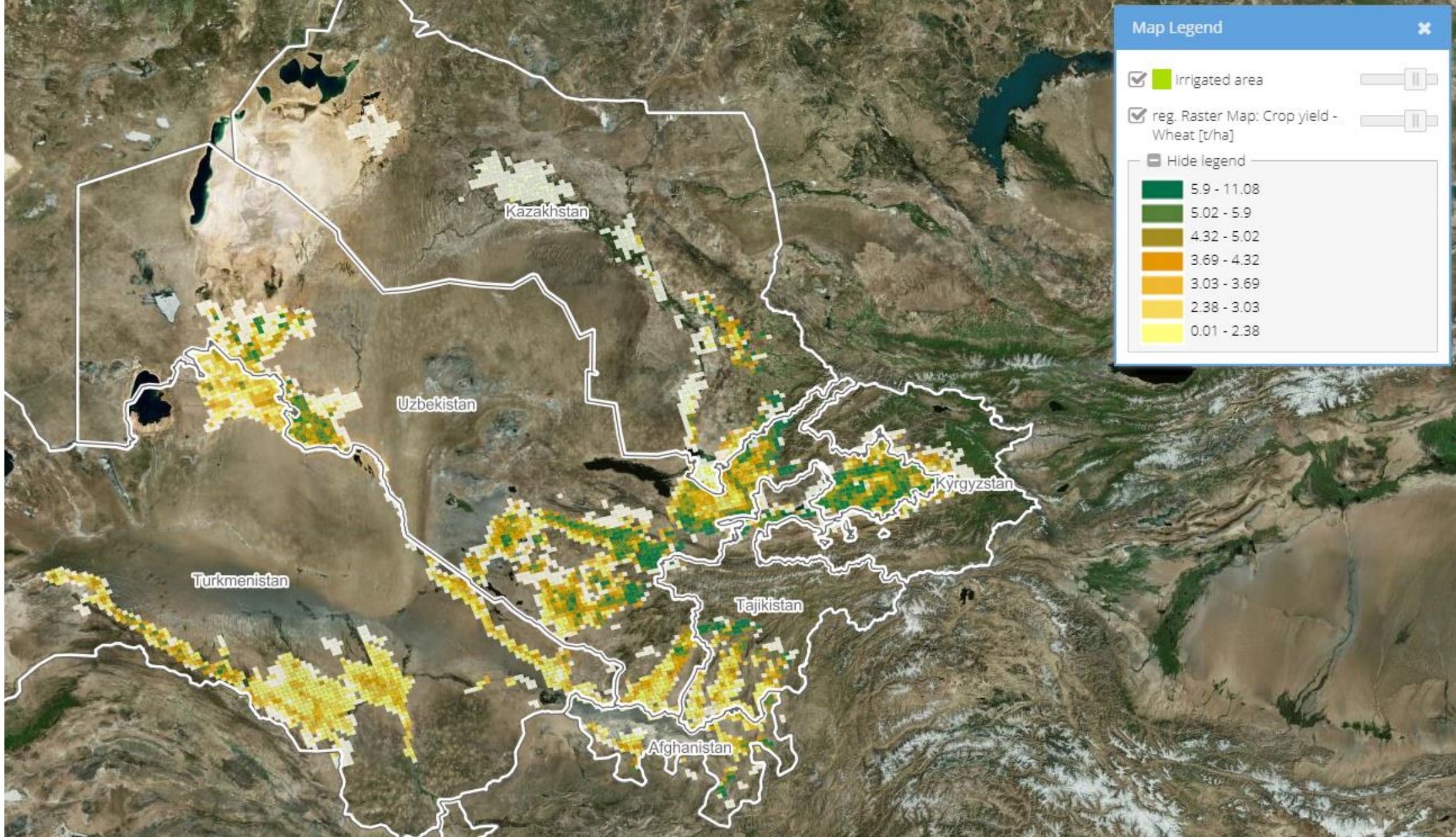


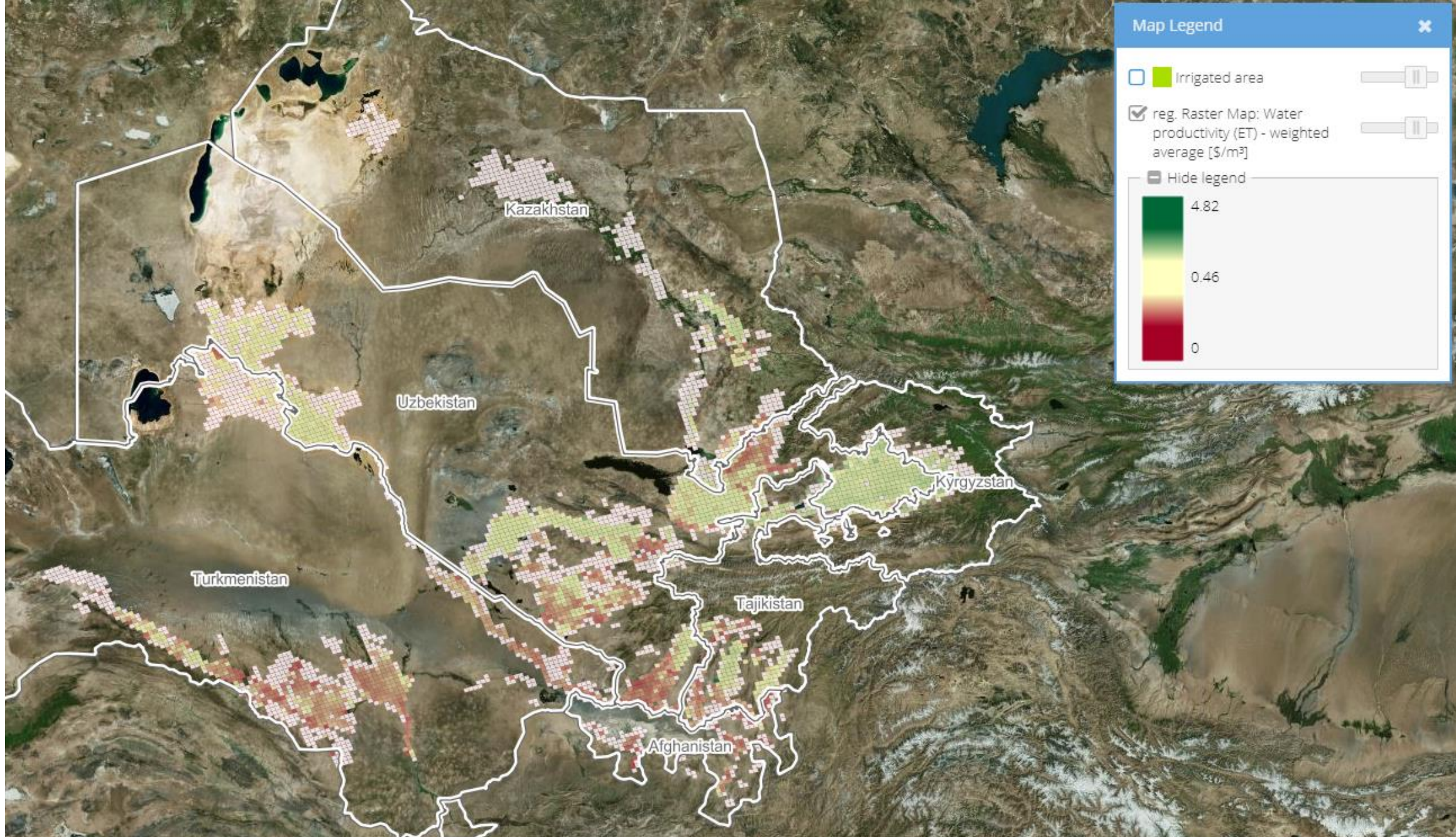
With support from



by decision of the German Bundestag









**Thank you very much for the attention!**

**Dr. Sebastian Fritsch**

**fritsch@greenspin.com**

**+49 931 460 578 67**

