



ICG-11, Sochi, Russia, 6-11 Nov. 2016



Introduction to the BDT Template



Zhiwu Cai, Haibo Yuan

Beijing Satellite Navigation Centre

National Time Service Center, CAS

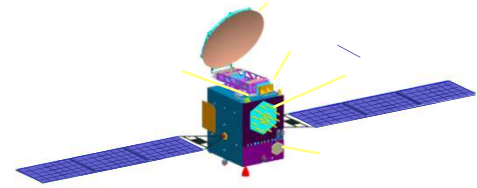
北斗

Outline

1. Definition of time system
2. The details of time system
3. The way of the timescale transfer
4. Others

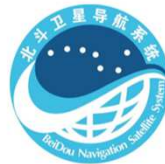


Reference



- **BeiDou Navigation Satellite System Signal In Space Interface Control Document, Open Service Signal (version2.0), China Satellite Navigation Office, 2013.**
(<http://www.beidou.gov.cn>)

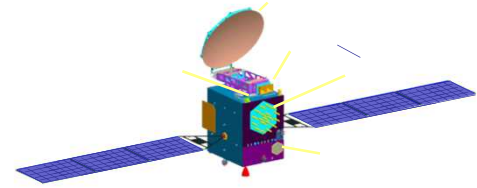
BeiDou Navigation Satellite System
Signal In Space
Interface Control Document
Open Service Signal (Version 2.0)



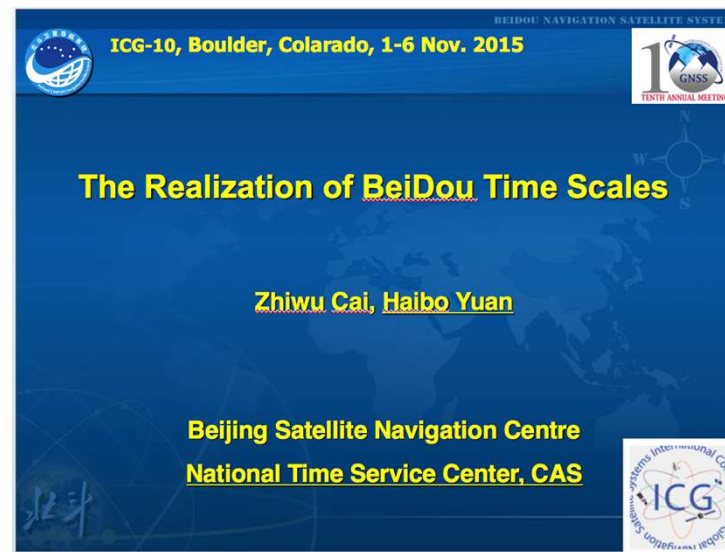
China Satellite Navigation Office
December 2013



Reference



- **“The Realization of BeiDou Time Scales”, Zhiwu Cai, Haibo Yuan, ICG-10, 2015.**





Thank you for your attention !



BEIDOU NAVIGATION SATELLITE SYSTEM